

# Ashland

## EARTHMOVERS

# CS18-HD

## Plumbing Parts Manual

ver. 1213



**Ashland Industries**

*Crafting Quality since 1953!*



1115 Rail Drive

P.O. Box 717

Ashland, WI U.S.A.

Toll Free: (877) 634-4622

Business: (715) 682-4622

Fax: (715) 682-9717

[www.ashlandind.com](http://www.ashlandind.com)

[www.scraperdrawing.com](http://www.scraperdrawing.com)

# Department Contacts

If you have questions, please feel free to call or email us.

Ashland Industries' hours of operation are 8:00am to 5:00pm CST. We can be reached at:

## Sales

---

Will Davis <i>North American Sales Manager</i>	<a href="mailto:wdavis@ashlandind.com">wdavis@ashlandind.com</a> (877)-634-4622 EXT 220 Cell: (660) 973-1935
Nick Speckman <i>Marketing and Inside Sales Coordinator</i>	(877)-634-4622 EXT 210 <a href="mailto:nspeckman@ashlandind.com">nspeckman@ashlandind.com</a>
Randy Rust <i>President</i>	(877)-634-4622 EXT 140 <a href="mailto:rrust@ashlandind.com">rrust@ashlandind.com</a>

---

## Parts & Service

---

Al Haring <i>Service/Parts Manager</i>	(877)-634-4622 EXT 160 <a href="mailto:aharing@ashlandind.com">aharing@ashlandind.com</a>
Cyndee Marx <i>Office Manager</i>	(877)-634-4622 EXT 100 <a href="mailto:cmarx@ashlandind.com">cmarx@ashlandind.com</a>

---

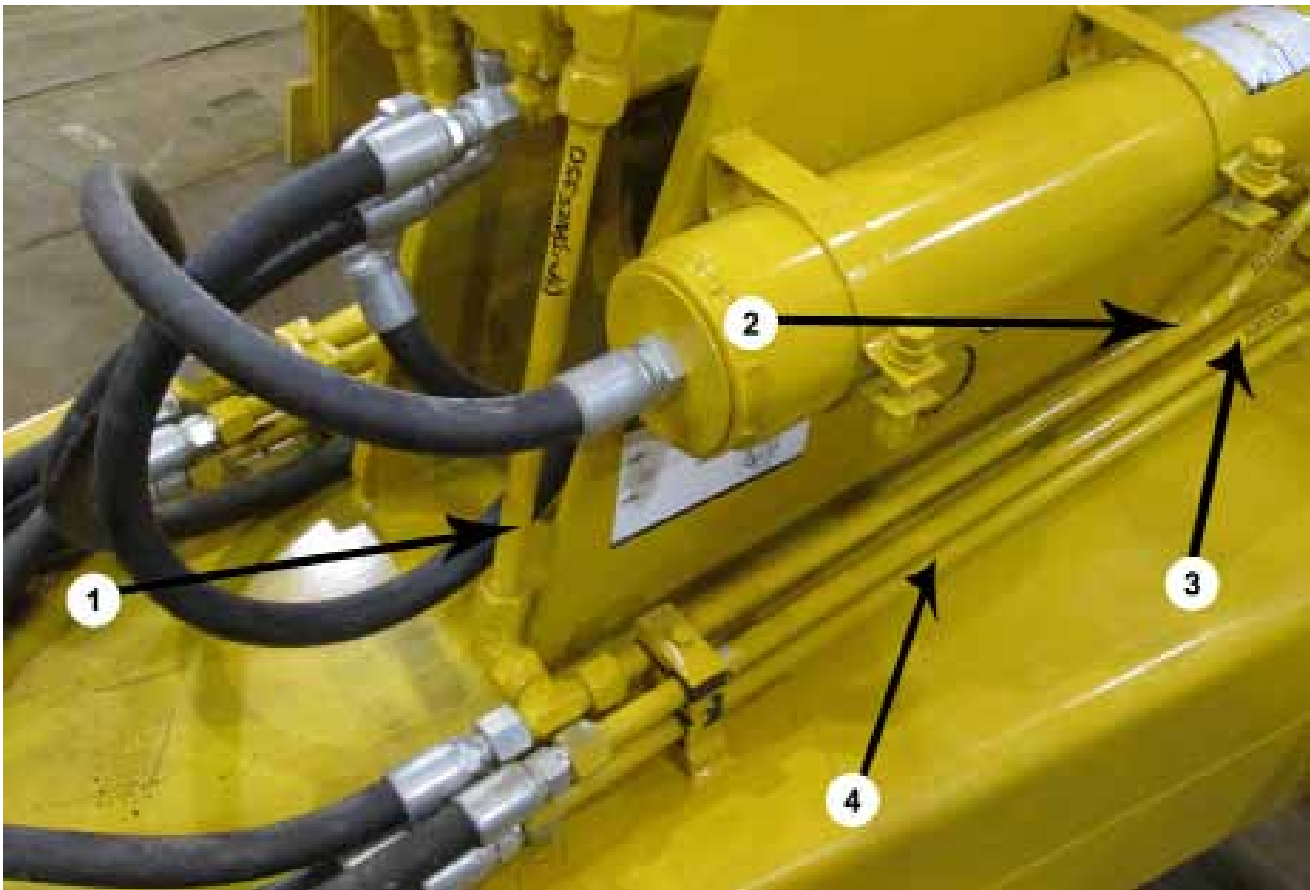
## **Important**

Parts must be ordered through your local authorized Ashland Dealer. Be sure to state **MODEL** and **SERIAL NUMBER** of your machine, **PART NUMBER**, **DESCRIPTION**, and **QUANTITY** needed.

Unless this is done, we cannot provide prompt service or assure shipment of the correct parts.

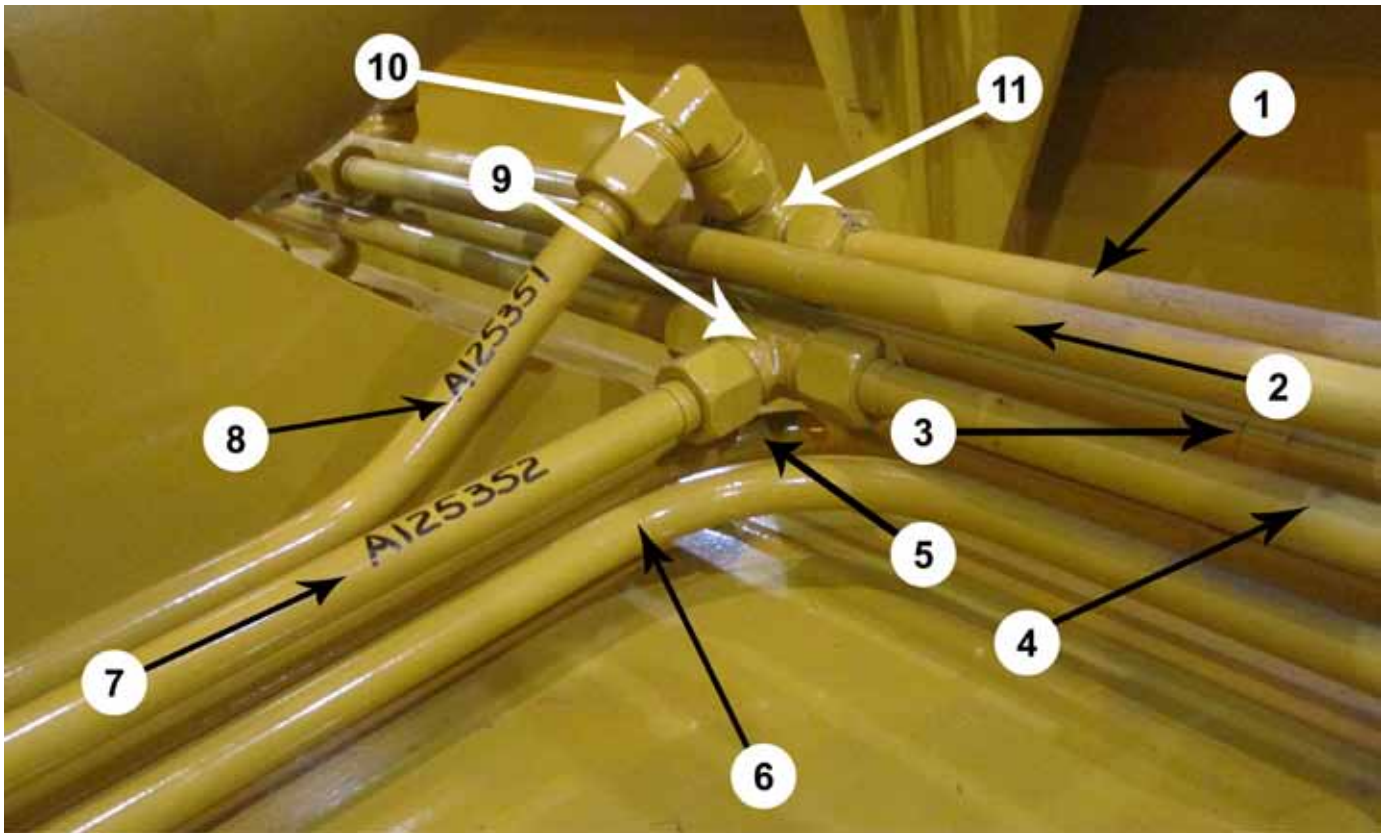
Ashland Industries weldable replacement parts are available to rebuild, modify or update your scraper to current factory specifications.

## LEFT Horse Head Front Section (CS18-HD)



KEY	PART	DESCRIPTION	S.N. CS18-HD
1	A125350	Tube Ass'y.: 3/4" x 38" w/-12 JIC Nuts & Sleeves	
2	A125351	Tube Ass'y.: 3/4" x 32.75" w/-12 JIC Nuts & Sleeves	
3	A125352	Tube Ass'y.: 3/4" x 33.125" w/-12 JIC Nuts & Sleeves	
4	A125366-L	Tube Ass'y.: 3/4" x 97.625" w/-12 JIC Nuts & Sleeves	

## LEFT Middle Front Section (CS18-HD)



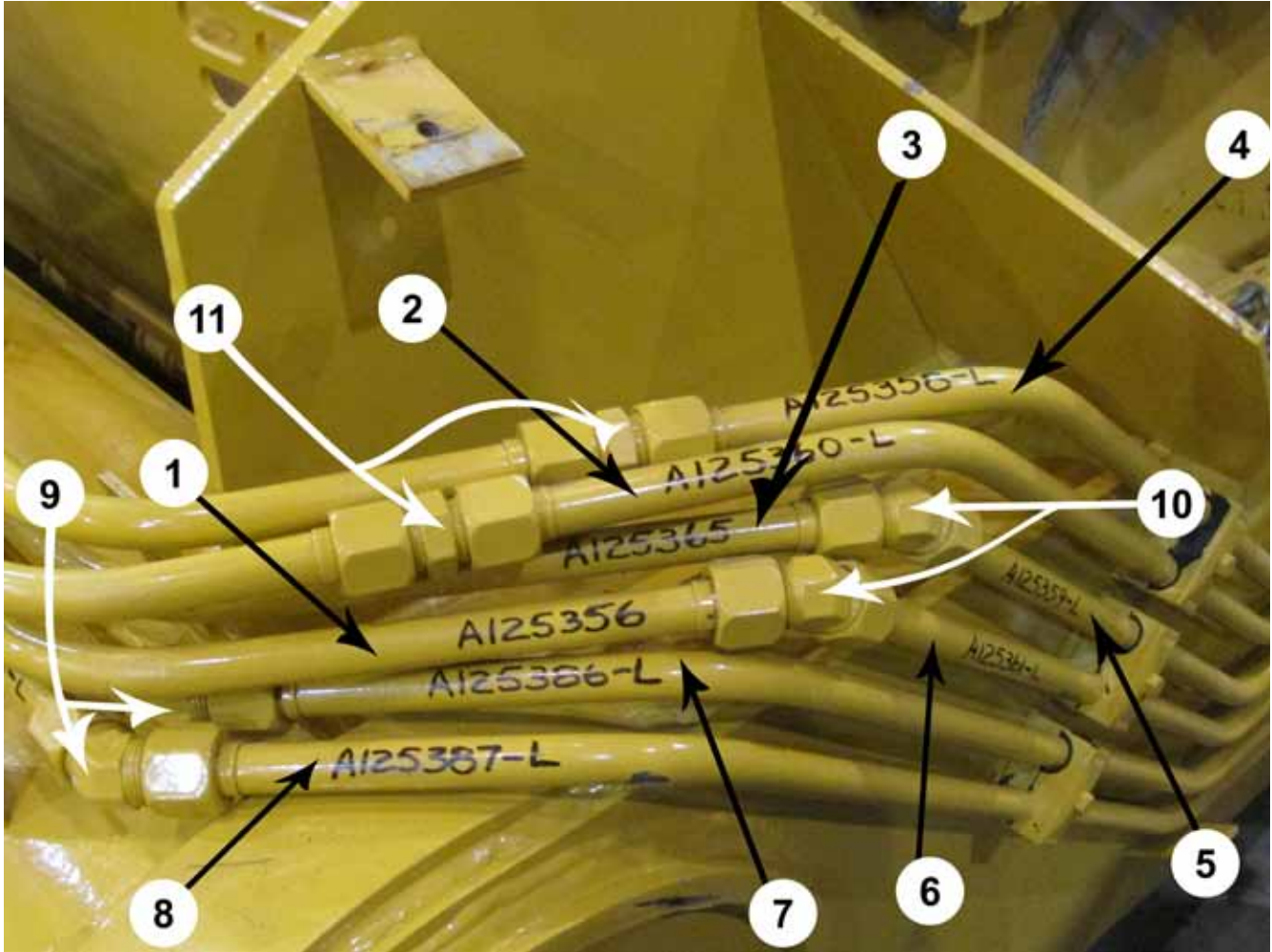
KEY	PART	DESCRIPTION	S.N. CS18-HD
1	A125355	Tube Ass'y.: 3/4" x 69.875" w/-12 JIC Nuts & Sleeves	
2	A125362	Tube Ass'y.: 3/4" x 83" w/-12 JIC Nuts & Sleeves	
3	A125365	Tube Ass'y.: 3/4" x 90.375" w/-12 JIC Nuts & Sleeves	
4	A125356	Tube Ass'y.: 3/4" x 72.25" w/-12 JIC Nuts & Sleeves	
5	A125385-L	Tube Ass'y.: 3/4" x 101.125" w/-12 JIC Nuts & Sleeves	
6	A125366-L	Tube Ass'y.: 3/4" x 97.625" w/-12 JIC Nuts & Sleeves	
7	A125352	Tube Ass'y.: 3/4" x 33.125" w/-12 JIC Nuts & Sleeves	
8	A125351	Tube Ass'y.: 3/4" x 32.75" w/-12 JIC Nuts & Sleeves	
9	AHA-00022	Adapter: T 3/4 MJ x 3/4 MJ x 3/4 MJ	
10	AHA-00042	Adapter: 90 Swiv. 3/4 MJ x 3/4 FJ	
11	AHA-00022	Adapter: T 3/4 MJ x 3/4 MJ x 3/4 MJ	

**LEFT Front Section (CS18-HD)**



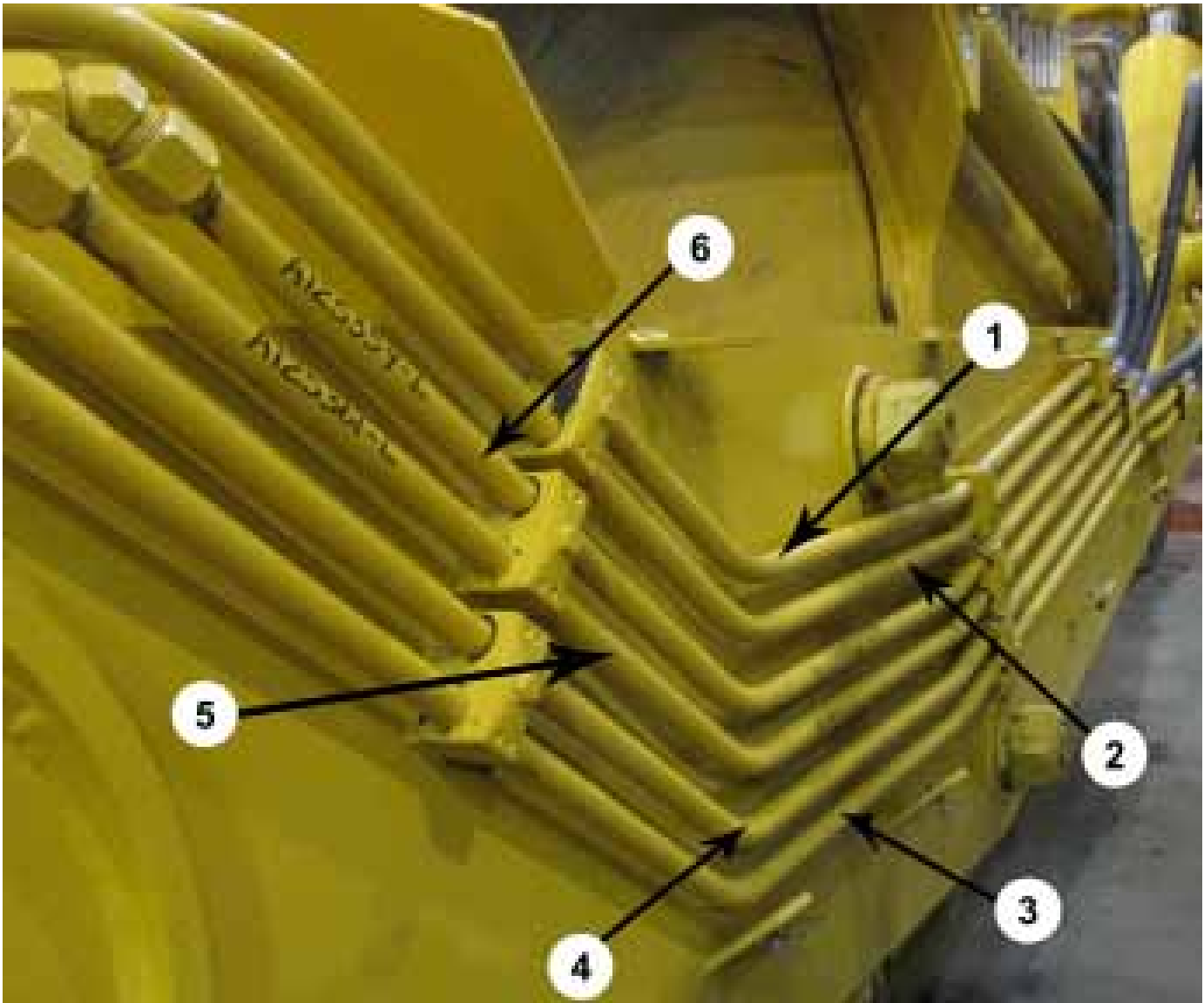
KEY	PART	DESCRIPTION	S.N. CS18-HD
1	A125366-L	Tube Ass'y.: 3/4" x 97.625" w/-12 JIC Nuts & Sleeves	
2	A125385-L	Tube Ass'y.: 3/4" x 101.125" w/-12 JIC Nuts & Sleeves	
3	A125356	Tube Ass'y.: 3/4" x 72.25" w/-12 JIC Nuts & Sleeves	
4	A125365	Tube Ass'y.: 3/4" x 90.375" w/-12 JIC Nuts & Sleeves	
5	A125362	Tube Ass'y.: 3/4" x 83" w/-12 JIC Nuts & Sleeves	

**LEFT Front Shoulder Section (CS18-HD)**



KEY	PART	DESCRIPTION	S.N. CS18-HD
1	A125356	Tube Ass'y.: 3/4" x 72.25" w/-12 JIC Nuts & Sleeves	
2	A125360-L	Tube Ass'y.: 3/4" x 78.25" w/-12 JIC Nuts & Sleeves	
3	A125365	Tube Ass'y.: 3/4" x 90.375" w/-12 JIC Nuts & Sleeves	
4	A125358-L	Tube Ass'y.: 3/4" x 73.5" w/-12 JIC Nuts & Sleeves	
5	A125359-L	Tube Ass'y.: 3/4" x 76.75" w/-12 JIC Nuts & Sleeves	
6	A125361-L	Tube Ass'y.: 3/4" x 81.25" w/-12 JIC Nuts & Sleeves	
7	A125386-L	Tube Ass'y.: 3/4" x 107.75" w/-12 JIC Nuts & Sleeves	
8	A125387-L	Tube Ass'y.: 3/4" x 111" w/-12 JIC Nuts & Sleeves	
9	AHA-00082	Adapter: 45 Deg. -12MJ x -12MJ	
10	AHA-00082	Adapter: 45 Deg. -12MJ x -12MJ	
11	AHA-00032	Adapter: Str. 3/4 MJ x 3/4 MJ	

**LEFT Side Front Section (CS18-HD)**



KEY	PART	DESCRIPTION	S.N. CS18-HD
1	A125358-L	Tube Ass'y.: 3/4" x 73.5" w/-12 JIC Nuts & Sleeves	
2	A125360-L	Tube Ass'y.: 3/4" x 78.25" w/-12 JIC Nuts & Sleeves	
3	A125387-L	Tube Ass'y.: 3/4" x 111" w/-12 JIC Nuts & Sleeves	
4	A125386-L	Tube Ass'y.: 3/4" x 107.75" w/-12 JIC Nuts & Sleeves	
5	A125361-L	Tube Ass'y.: 3/4" x 81.25" w/-12 JIC Nuts & Sleeves	
6	A125359-L	Tube Ass'y.: 3/4" x 76.75" w/-12 JIC Nuts & Sleeves	

**Left Side Hoses (CS18-HD)**



KEY	PART	DESCRIPTION	S.N. CS18-HD
1	A125376	Hose Ass'y.: 3/4 x 43.5" L&R Bucket Cyl. CS18HD	
2	A125376	Hose Ass'y.: 3/4 x 43.5" L&R Bucket Cyl. CS18HD	
3	A125380	Hose Ass'y.: 3/4 x 50" R&L Lift Cyl. CS18HD	
4	A125379	Hose Ass'y.: 3/4 x 54.5" R&L Lift Cyl. CS18HD	
5	A125368	Hose Ass'y.: 3/4 x 71-1/2" L & R Rear Feed CS18HD	
6	A125368	Hose Ass'y.: 3/4 x 71-1/2" L & R Rear Feed CS18HD	
7	AHA-00019	Adapter: 90 Deg. 3/4 MJ x 3/4 MJ	

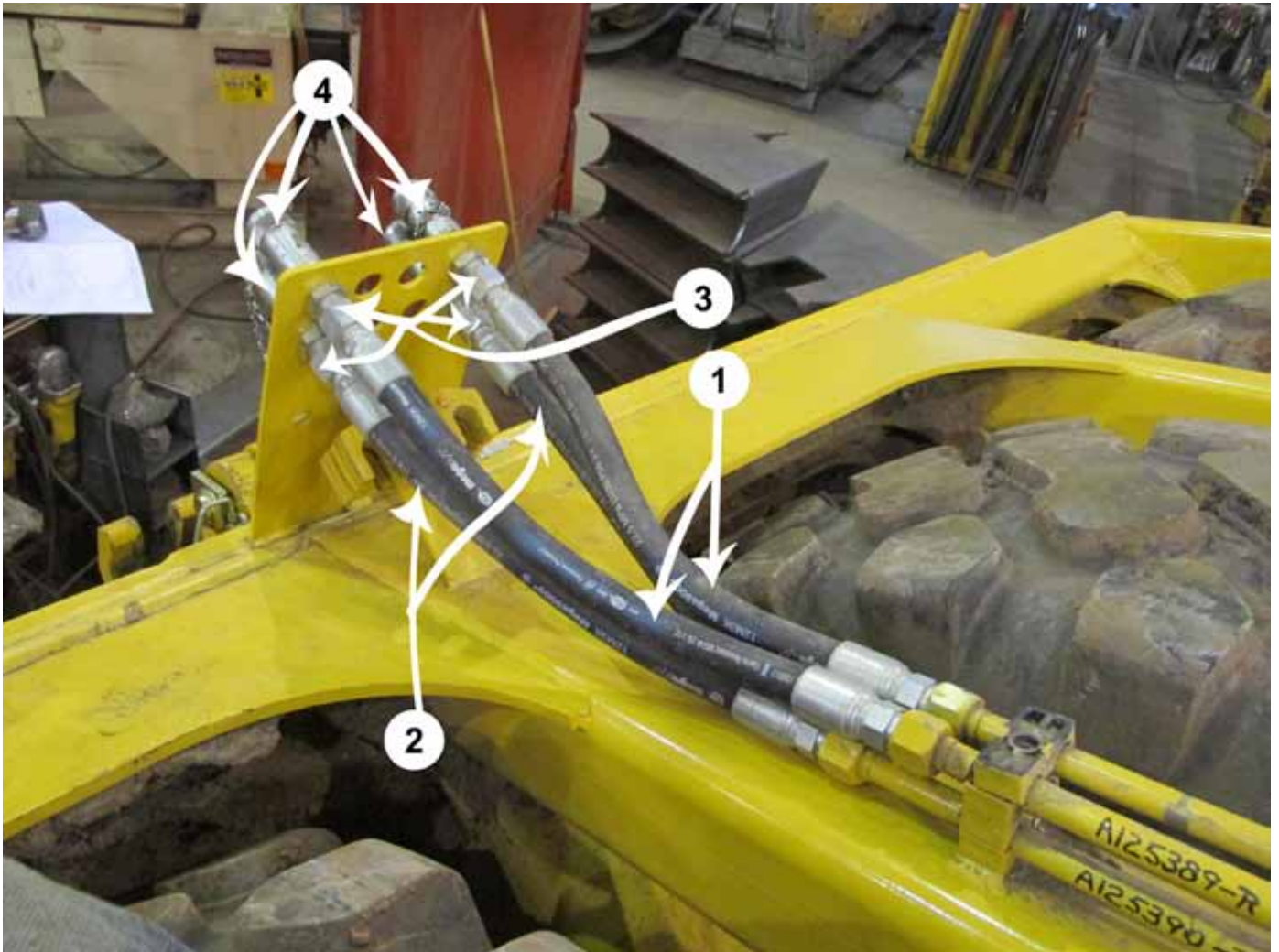


**LEFT Rear Section (CS18-HD)**



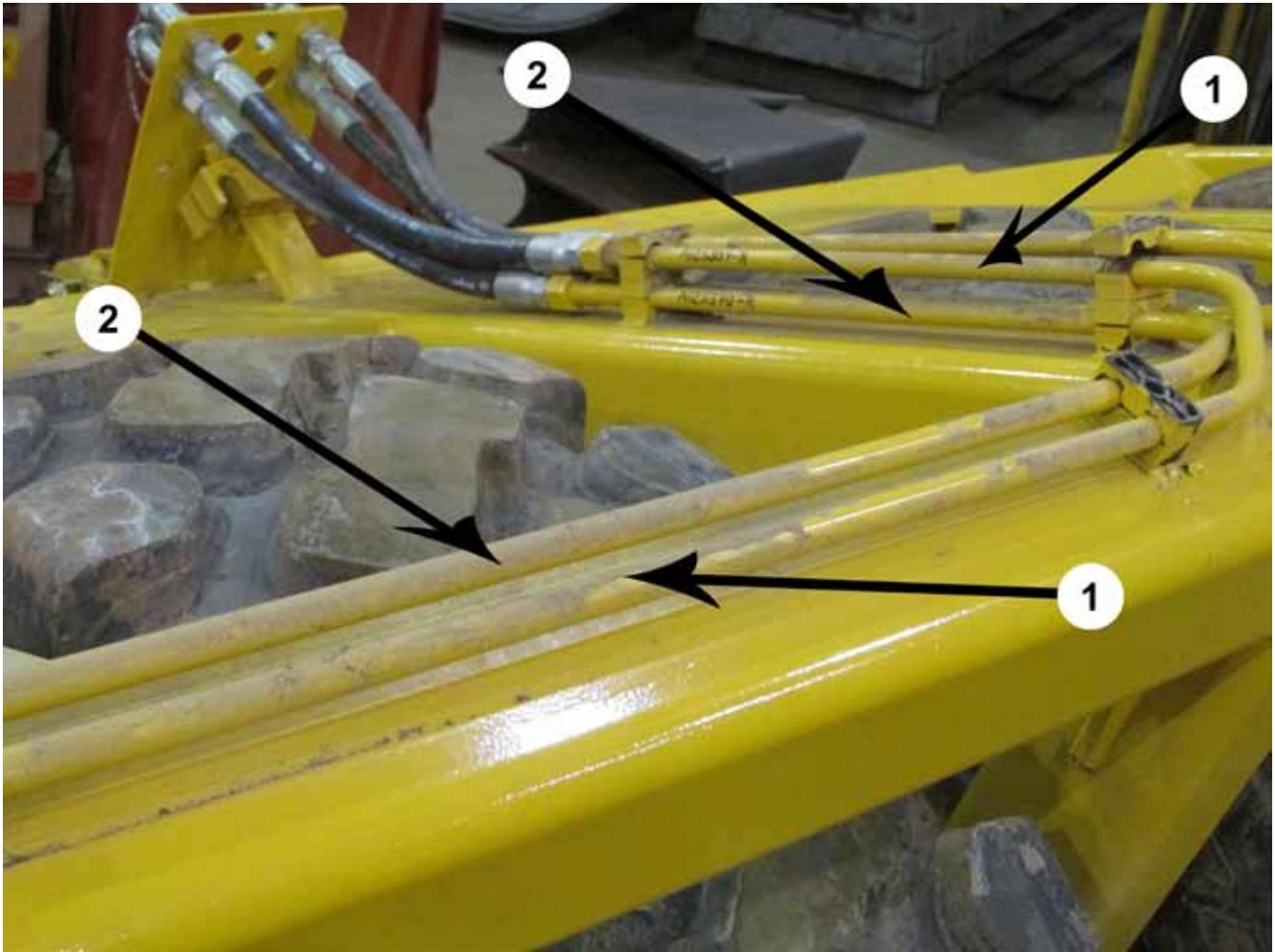
KEY	PART	DESCRIPTION	S.N. CS18-HD
1	A125389-L	Tube Ass'y.:R.F. Top. Left CS18HD	
2	A125390-L	Tube Ass'y.:R.F. Bott. Left CS18HD	

**Rear Hoses (CS18-HD)**



KEY	PART	DESCRIPTION	S.N. CS18-HD
1	A125375	Hose Ass'y.: 3/4 x 23" Rear Feed CS18HD	
2	A125374	Hose Ass'y.: 3/4 x 21" Rear Feed CS18HD	
3	AHA-00093	Adapter: Str. B.H. -12 MJ x -12 MP	
4	AHF-00023	<del>Adapter: 90 Swiv. 7/8 M ORB x 1/2 FP</del>	

**RIGHT Rear Section (CS18-HD)**



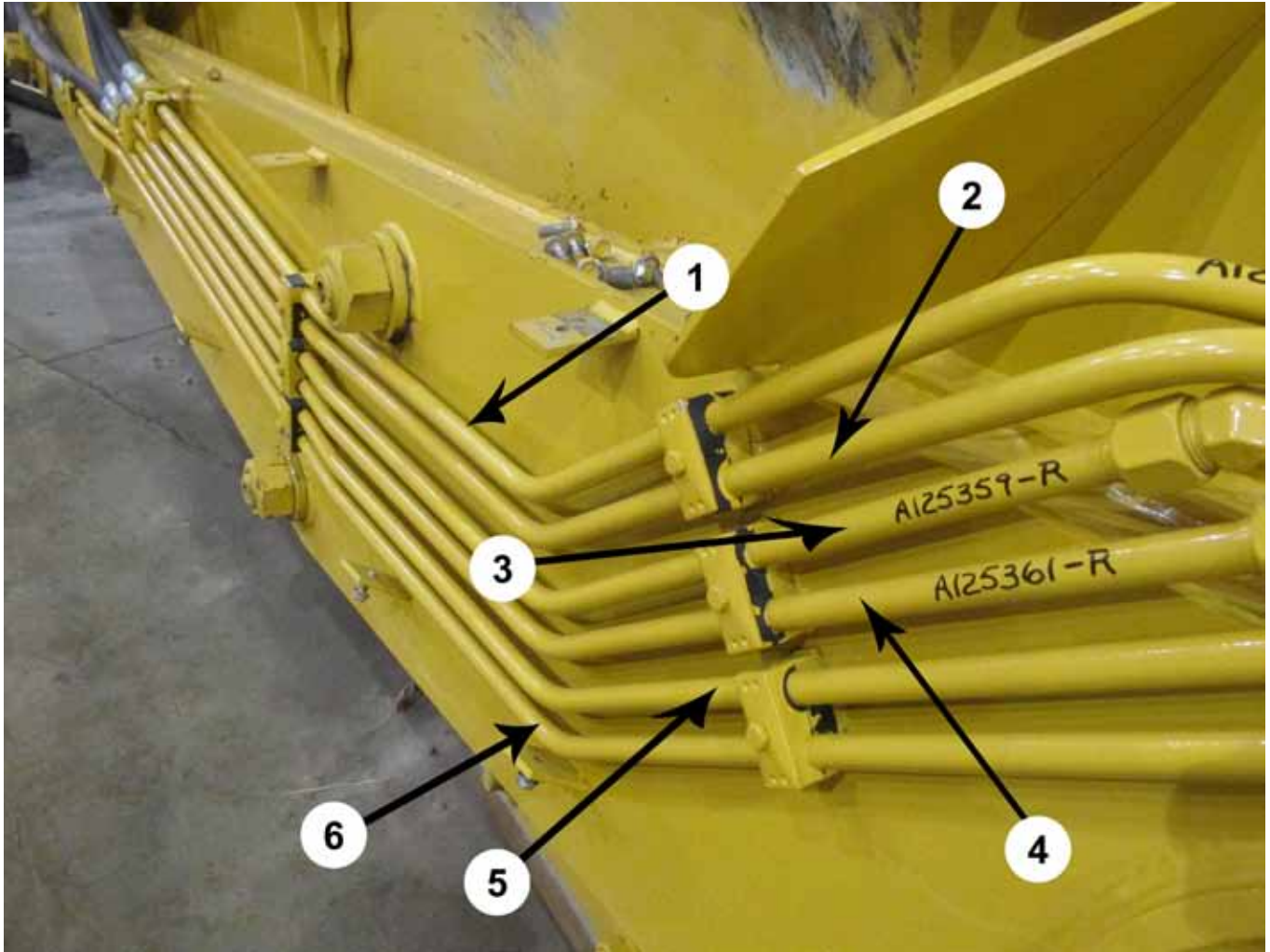
KEY	PART	DESCRIPTION	S.N. CS18-HD
1	A125389-R	Tube Ass'y.:R.F. Top. Right CS18HD	
2	A125390-R	Tube Ass'y.:R.F. Bott. Right CS18HD	

**Right Side Hoses (CS18-HD)**



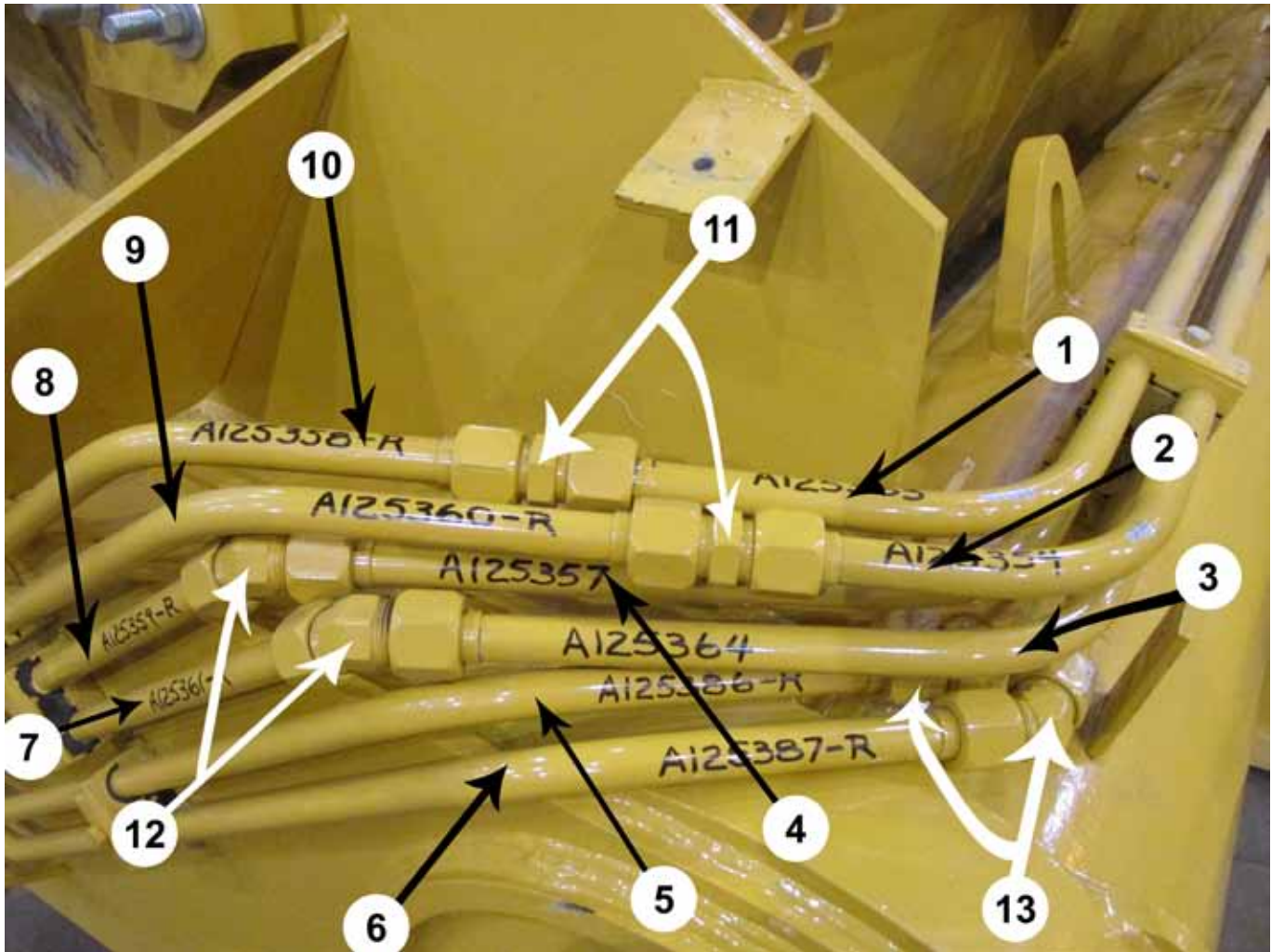
KEY	PART	DESCRIPTION	S.N. CS18-HD
1	A125376	Hose Ass'y.: 3/4 x 43.5" L&R Bucket Cyl. CS18HD	
2	A125376	Hose Ass'y.: 3/4 x 43.5" L&R Bucket Cyl. CS18HD	
3	A125380	Hose Ass'y.: 3/4 x 50" R&L Lift Cyl. CS18HD	
4	A125379	Hose Ass'y.: 3/4 x 54.5" R&L Lift Cyl. CS18HD	
5	A125368	Hose Ass'y.: 3/4 x 71-1/2" L & R Rear Feed CS18HD	
6	A125368	Hose Ass'y.: 3/4 x 71-1/2" L & R Rear Feed CS18HD	
7	AHA-00019	Adapter: 90 Deg. 3/4 MJ x 3/4 MJ	

**RIGHT Middle Front Section (CS18-HD)**



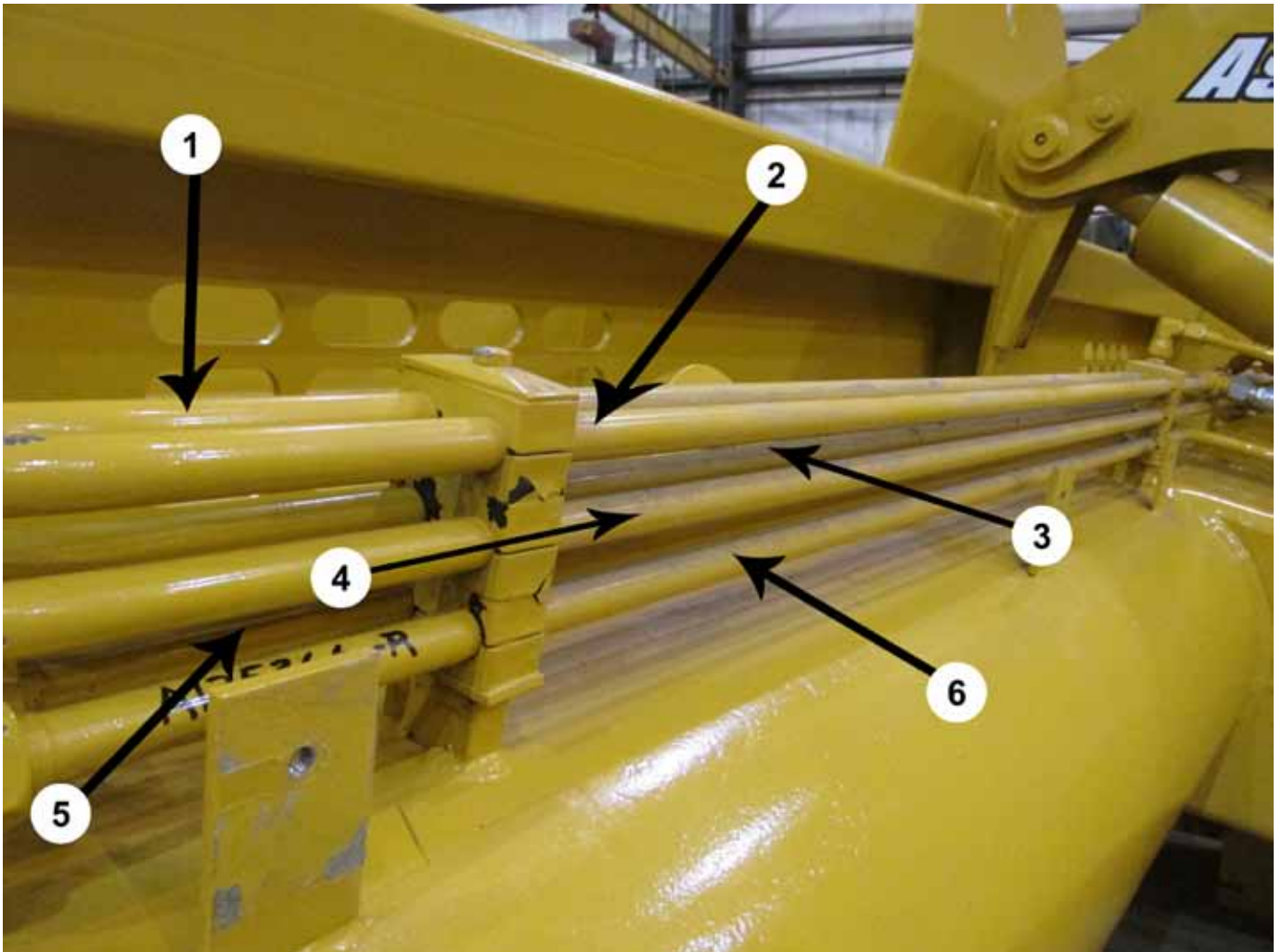
KEY	PART	DESCRIPTION	S.N. CS18-HD
1	A125358-R	Tube Ass'y.: 3/4" x 73.5" w/-12 JIC Nuts & Sleeves	
2	A125360-R	Tube Ass'y.: 3/4" x 78.25" w/-12 JIC Nuts & Sleeves	
3	A125359-R	Tube Ass'y.: 3/4" x 76.75" w/-12 JIC Nuts & Sleeves	
4	A125361-R	Tube Ass'y.: 3/4" x 81.25" w/-12 JIC Nuts & Sleeves	
5	A125386-R	Tube Ass'y.: 3/4" x 107.75" w/-12 JIC Nuts & Sleeves	
6	A125387-R	Tube Ass'y.: 3/4" x 111" w/-12 JIC Nuts & Sleeves	

**RIGHT Shoulder Front Section (CS18-HD)**



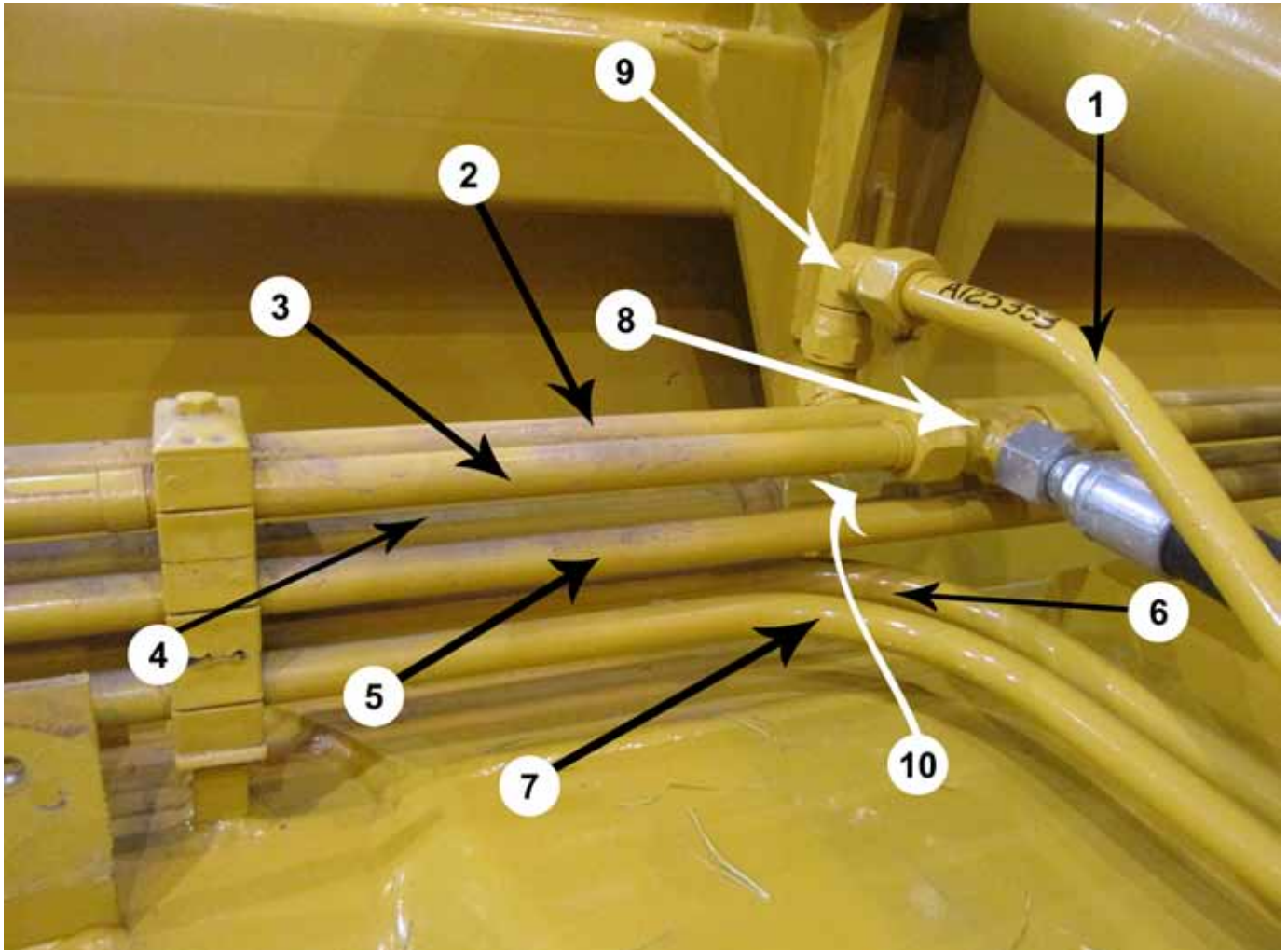
KEY	PART	DESCRIPTION	S.N. CS18-HD
1	A125363	Tube Ass'y.: 3/4" x 84.375" w/-12 JIC Nuts & Sleeves	
2	A125354	Tube Ass'y.: 3/4" x 68.375" w/-12 JIC Nuts & Sleeves	
3	A125364	Tube Ass'y.: 3/4" x 89.875" w/-12 JIC Nuts & Sleeves	
4	A125357	Tube Ass'y.: 3/4" x 72.625" w/-12 JIC Nuts & Sleeves	
5	A125386-R	Tube Ass'y.: 3/4" x 107.75" w/-12 JIC Nuts & Sleeves	
6	A125387-R	Tube Ass'y.: 3/4" x 111" w/-12 JIC Nuts & Sleeves	
7	A125361-R	Tube Ass'y.: 3/4" x 81.25" w/-12 JIC Nuts & Sleeves	
8	A125359-R	Tube Ass'y.: 3/4" x 76.75" w/-12 JIC Nuts & Sleeves	
9	A125360-R	Tube Ass'y.: 3/4" x 78.25" w/-12 JIC Nuts & Sleeves	
10	A125358-R	Tube Ass'y.: 3/4" x 73.5" w/-12 JIC Nuts & Sleeves	
11	AHA-00032	Adapter: Str. 3/4 MJ x 3/4 MJ	
12	AHA-00082	Adapter: 45 Deg. -12MJ x -12MJ	
13	AHA-00082	Adapter: 45 Deg. -12MJ x -12MJ	

**RIGHT Middle Top Front Section (CS18-HD)**



KEY	PART	DESCRIPTION	S.N. CS18-HD
1	A125363	Tube Ass'y.: 3/4" x 84.375" w/-12 JIC Nuts & Sleeves	
2	A125354	Tube Ass'y.: 3/4" x 68.375" w/-12 JIC Nuts & Sleeves	
3	A125357	Tube Ass'y.: 3/4" x 72.625" w/-12 JIC Nuts & Sleeves	
4	A125364	Tube Ass'y.: 3/4" x 89.875" w/-12 JIC Nuts & Sleeves	
5	A125385-R	Tube Ass'y.: 3/4" x 101.125" w/-12 JIC Nuts & Sleeves	
6	A125366-R	Tube Ass'y.: 3/4" x 97.625" w/-12 JIC Nuts & Sleeves	

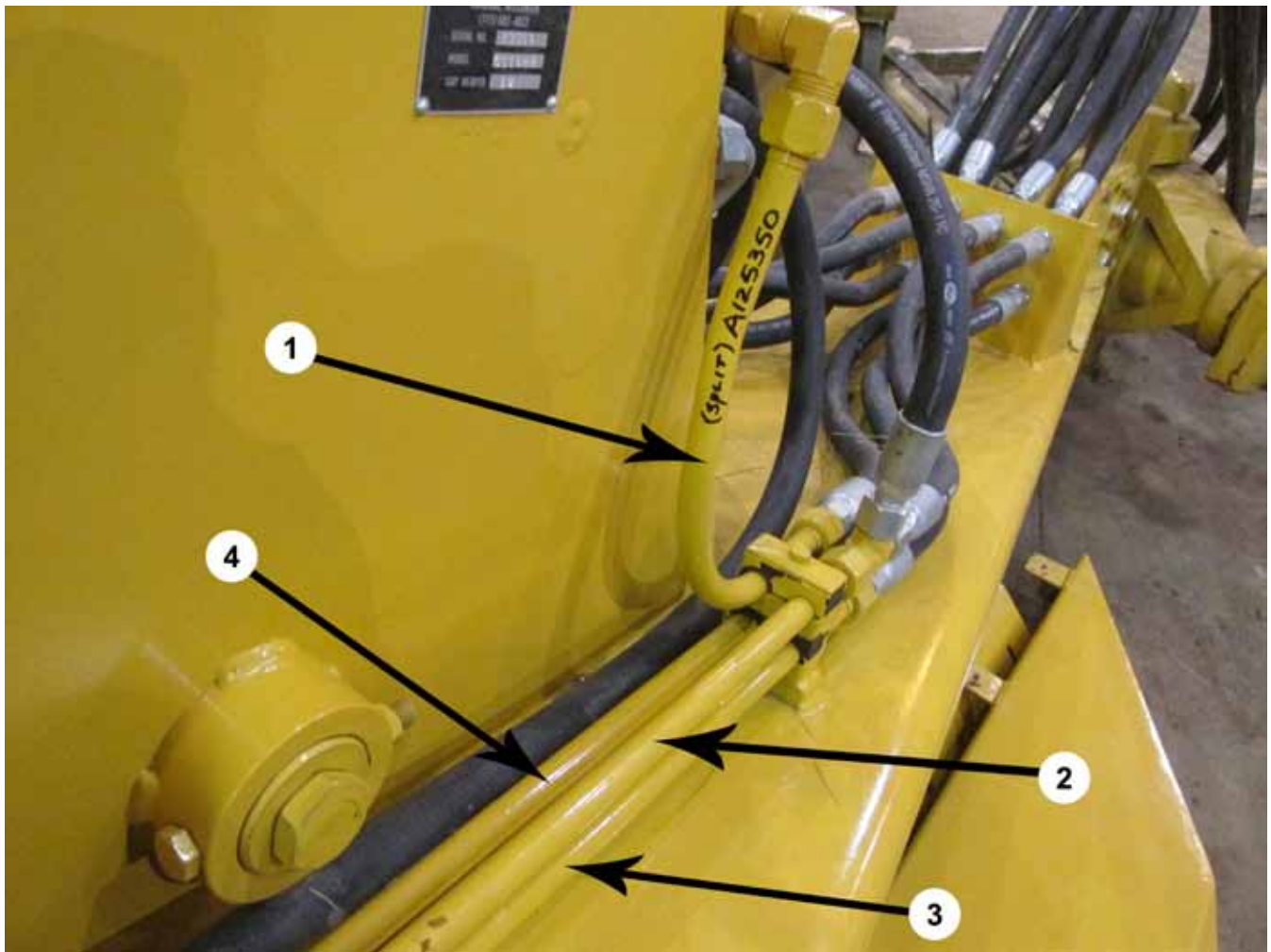
**RIGHT Middle Front Section (CS18-HD)**



KEY	PART	DESCRIPTION	S.N. CS18-HD
1	A125353	Tube Ass'y.: 3/4" x 37.625" w/-12 JIC Nuts & Sleeves	
2	A125363	Tube Ass'y.: 3/4" x 84.375" w/-12 JIC Nuts & Sleeves	
3	A125354	Tube Ass'y.: 3/4" x 68.375" w/-12 JIC Nuts & Sleeves	
4	A125357	Tube Ass'y.: 3/4" x 72.625" w/-12 JIC Nuts & Sleeves	
5	A125364	Tube Ass'y.: 3/4" x 89.875" w/-12 JIC Nuts & Sleeves	
6	A125385-R	Tube Ass'y.: 3/4" x 101.125" w/-12 JIC Nuts & Sleeves	
7	A125366-R	Tube Ass'y.: 3/4" x 97.625" w/-12 JIC Nuts & Sleeves	
8	AHA-00022	Adapter: T 3/4 MJ x 3/4 MJ x 3/4 MJ	
9	AHA-00042	Adapter: 90 Swiv. 3/4 MJ x 3/4 FJ	
10	AHA-00050	Adapter: T 3/4 MJ x 3/4 FJ Sw. x 3/4 MJ	

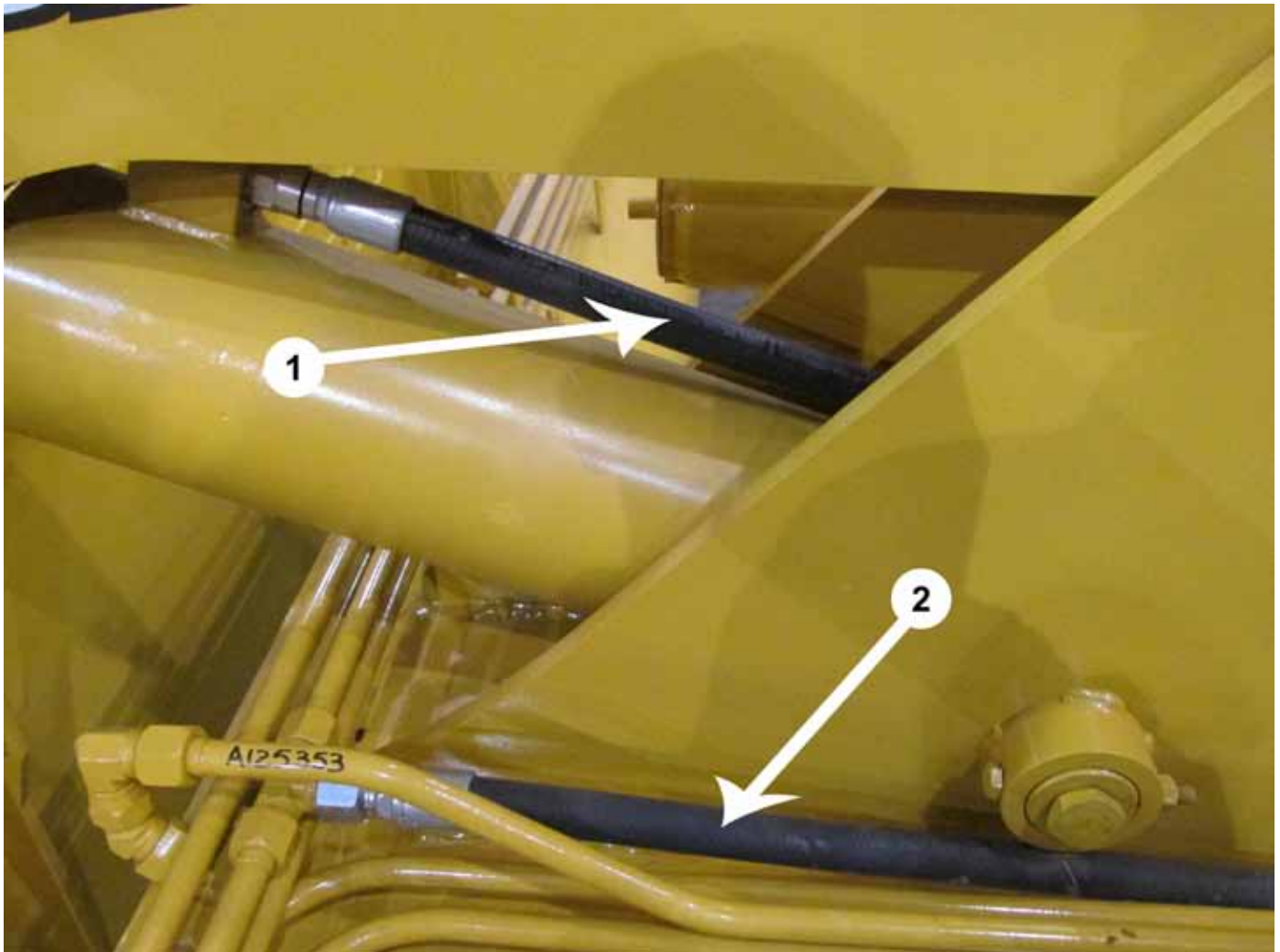


**RIGHT Horse Head Section (CS18-HD)**



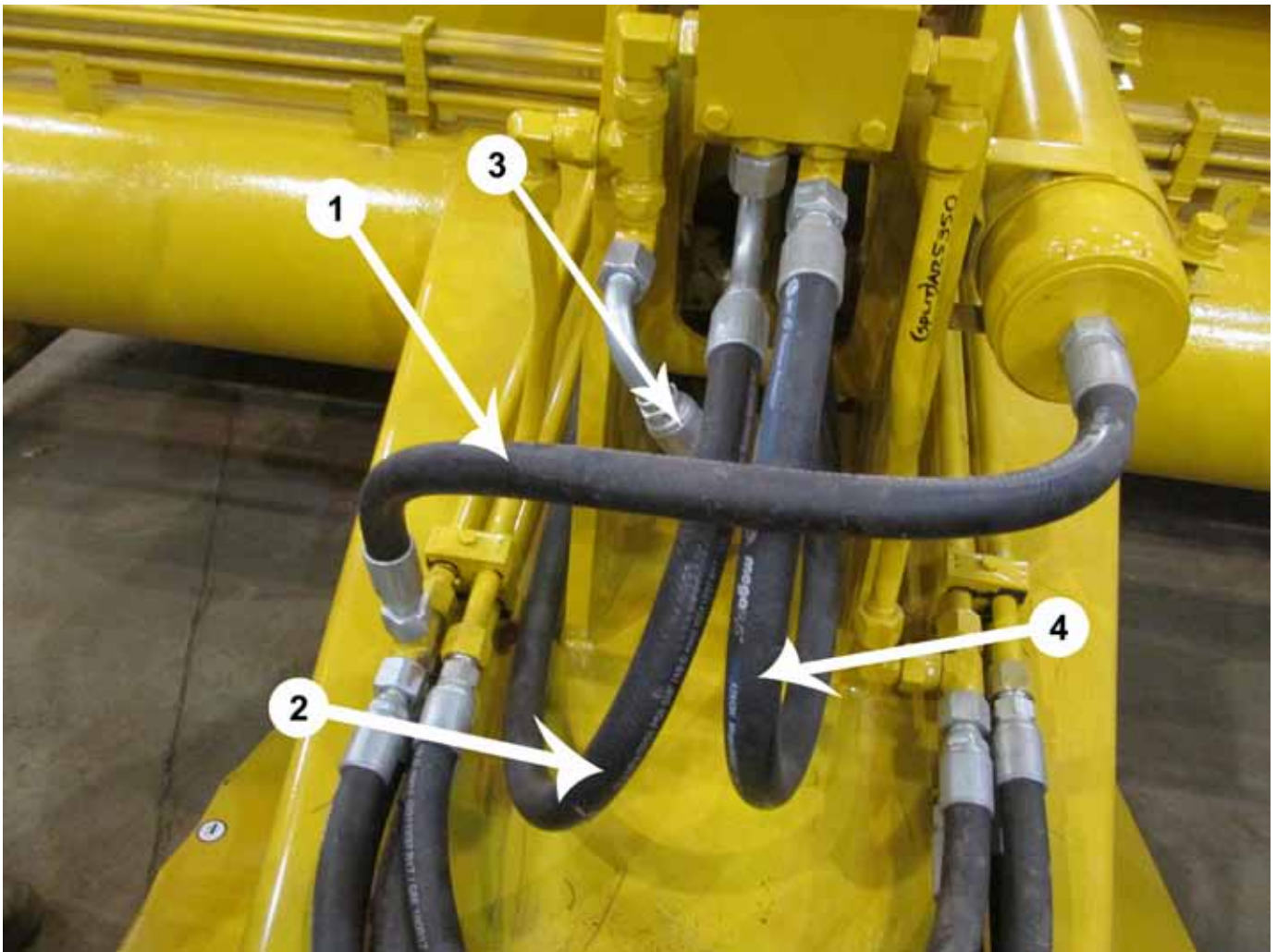
KEY	PART	DESCRIPTION	S.N. CS18-HD
1	A125350	Tube Ass'y.: 3/4" x 38" w/-12 JIC Nuts & Sleeves	
2	A125353	Tube Ass'y.: 3/4" x 37.625" w/-12 JIC Nuts & Sleeves	
3	A125366-R	Tube Ass'y.: 3/4" x 97.625" w/-12 JIC Nuts & Sleeves	
4	A125385-R	Tube Ass'y.: 3/4" x 101.125" w/-12 JIC Nuts & Sleeves	

**Horse Head Top Hoses (CS18-HD)**



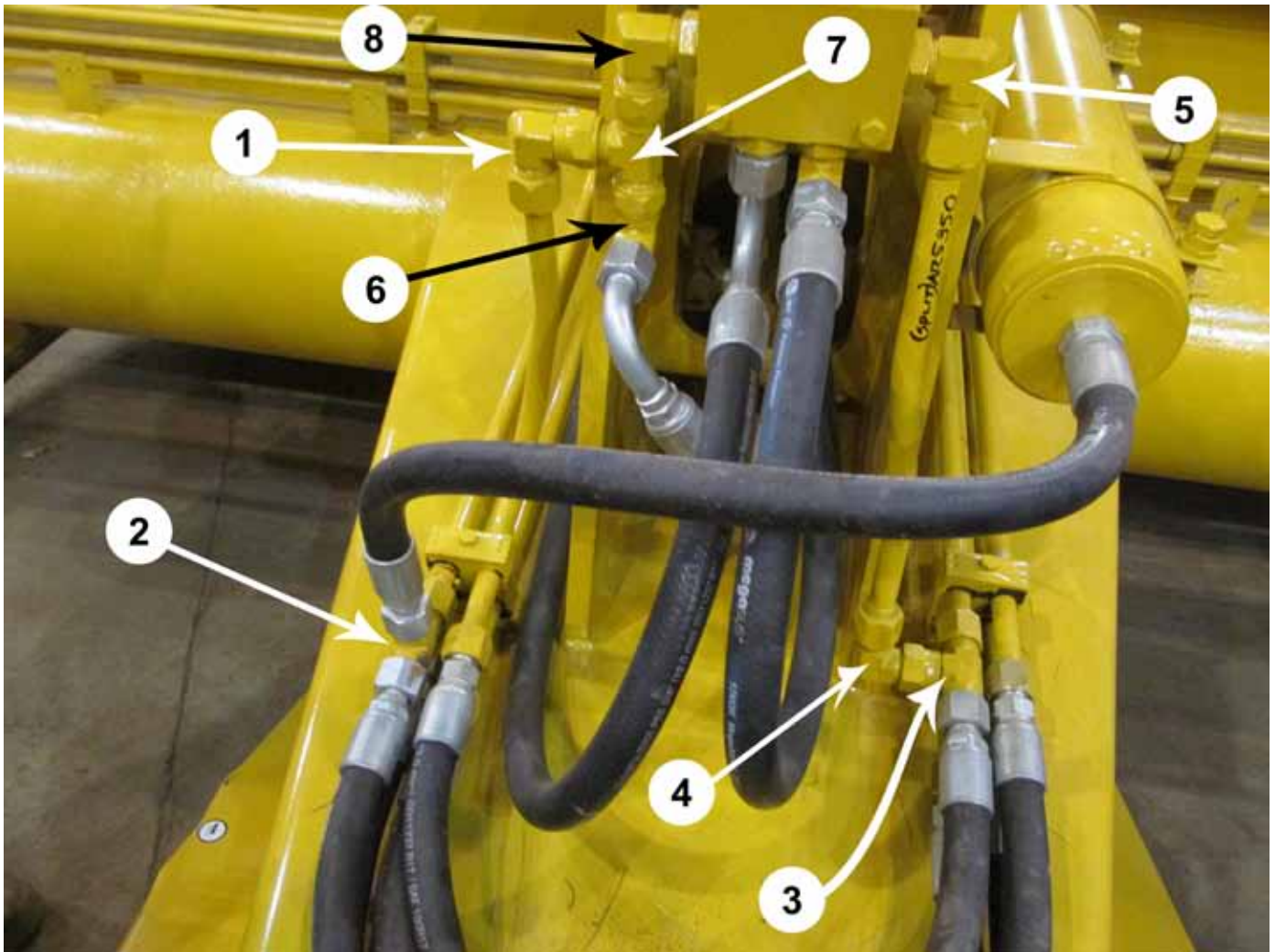
KEY	PART	DESCRIPTION	S.N. CS18-HD
1	A125378	Hose Ass'y.: 3/4 x 45" Front Cyl. CS18HD	
2	A125369	Hose Ass'y.: 3/4 x 63" Right Front CS18HD	

**Horse Head Hoses (CS18-HD)**



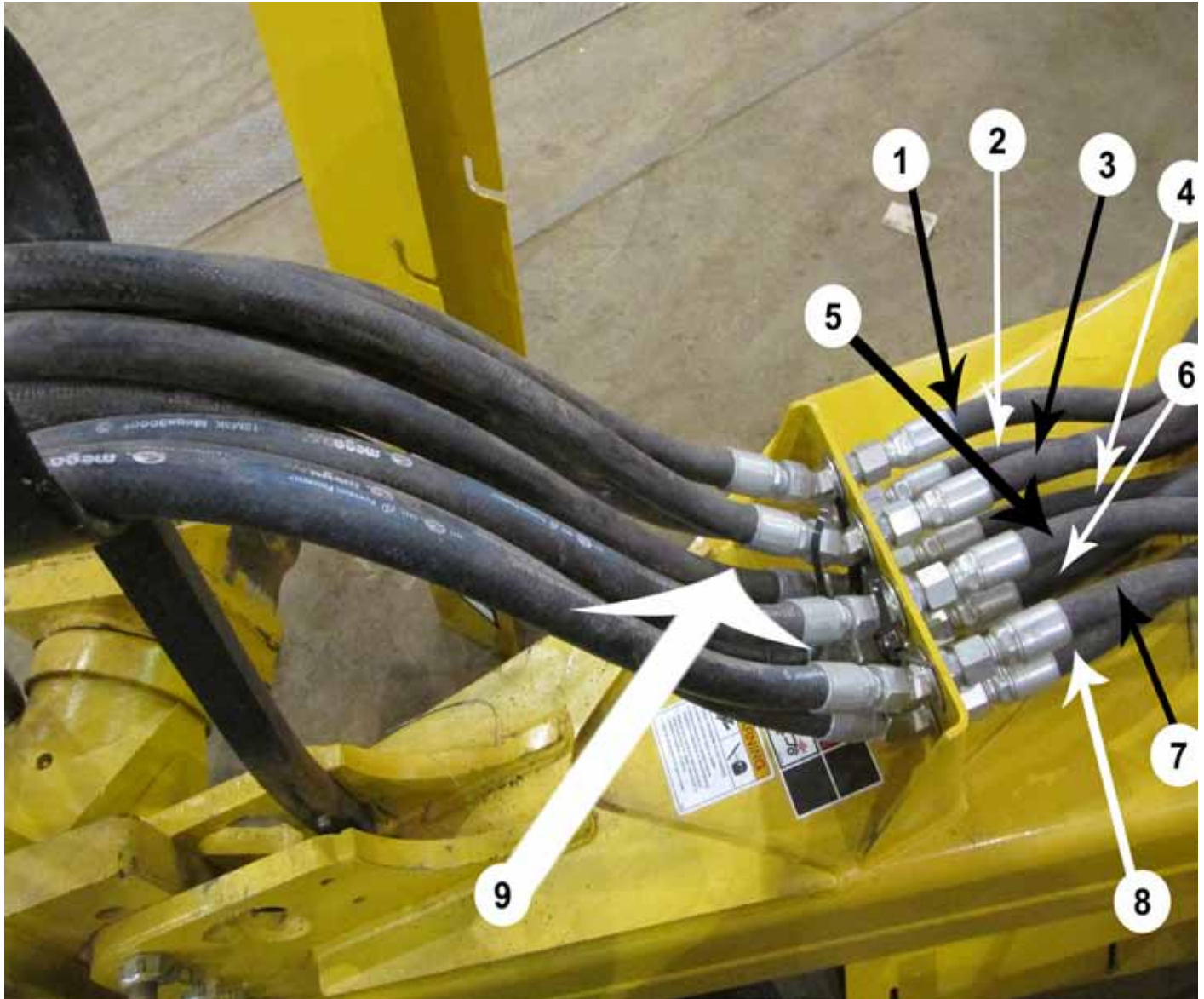
KEY	PART	DESCRIPTION	S.N. CS18-HD
1	A125371	Hose Ass'y.: 3/4 x 30.5" Right Front CS18HD	
2	A125369	Hose Ass'y.: 3/4 x 63" Right Front CS18HD	
3	A125378	Hose Ass'y.: 3/4 x 45" Front Cyl. CS18HD	
4	A125377	Hose Ass'y.: 3/4 x 45" Front Cyl. CS18HD	

## Horse Head Fittings (CS18-HD)



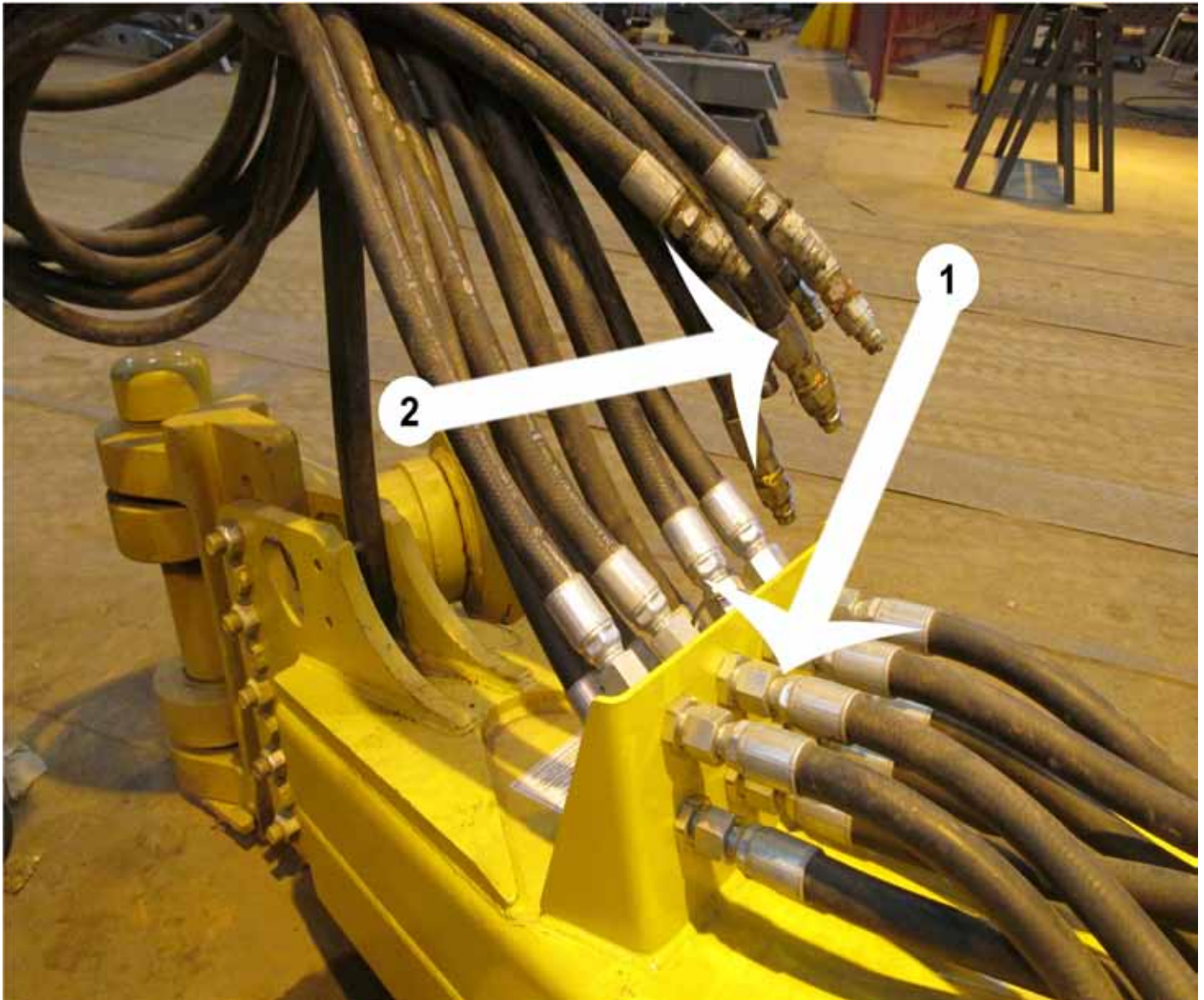
KEY	PART	DESCRIPTION	S.N. CS18-HD
1	AHA-00042	Adapter: 90 Swiv. 3/4 MJ x 3/4 FJ	
2	AHA-00022	Adapter: T 3/4 MJ x 3/4 MJ x 3/4 MJ	
3	AHA-00050	Adapter: T 3/4 MJ x 3/4 FJ Sw. x 3/4 MJ	
4	AHA-00019	Adapter: 90 Deg. 3/4 MJ x 3/4 MJ	
5	AHA-00044	Adapter: 90 Deg. 3/4 MJ x 1-1/16 M ORB	
6	AHA-00042	Adapter: 90 Swiv. 3/4 MJ x 3/4 FJ	
7	AHA-00049	Adapter: T 3/4 MJ x 3/4 MJ x 3/4 FJ Swiv.	
8	AHA-00044	Adapter: 90 Deg. 3/4 MJ x 1-1/16 M ORB	

**Front Section Bulkhead Hoses (CS18-HD)**



KEY	PART	DESCRIPTION	S.N. CS18-HD
1	A125373	Hose Ass'y.: 3/4 x 32" Right Front CS18HD	
2	A125372	Hose Ass'y.: 3/4 x 30" Right Front CS18HD	
3	A125370	Hose Ass'y.: 3/4 x 31" Right Front CS18HD	
4	A125373	Hose Ass'y.: 3/4 x 32" Right Front CS18HD	
5	A125382	Hose Ass'y.: 3/4 x 32" Left Front CS18HD	
6	A125384	Hose Ass'y.: 3/4 x 30" Left Front CS18HD	
7	A125383	Hose Ass'y.: 3/4 x 33.5" Left Front CS18HD	
8	A125381	Hose Ass'y.: 3/4 x 32" Left Front CS18HD	
9	A125367	Hose Ass'y.: 3/4 x 104" Connecting CS18HD (8 Total Per Machine)	

**Bulkhead Fittings (CS18-HD)**



KEY	PART	DESCRIPTION	S.N. CS18-HD
1	AHA-00063	Adapter: 45 Deg. 3/4 MJ x 3/4 MJ Bulkhead	
2	AHF-00021	Fitting: 3/4"FNPT x 1/2" Male Quick Conn. Poppet Style (THIS IS FOR THE OPPOSITE END OF THE HOSE THAT GOES INTO TRACTOR)	