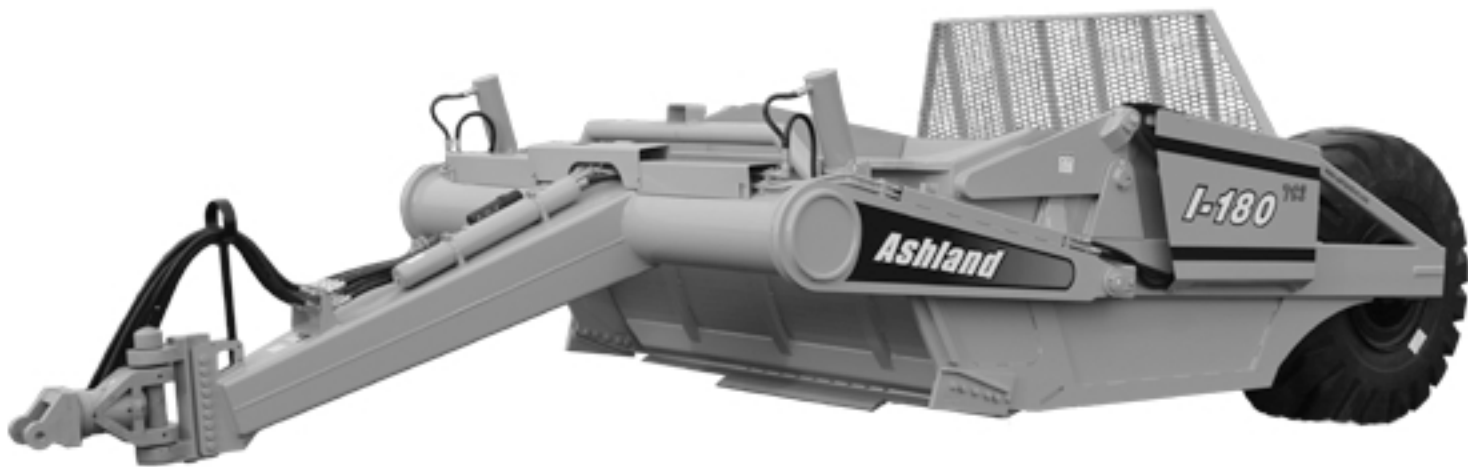


Ashland

EARTHMOVERS

Parts Manual

ver. 1011



I-180TSC2

Ashland Industries

Crafting Quality since 1953!



1115 Rail Drive

P.O. Box 717

Ashland, WI U.S.A.

Toll Free: (877) 634-4622

Business: (715) 682-4622

Fax: (715) 682-9717

www.ashlandind.com

www.scraperdrawbar.com

Table of Contents

Categorized Listing

ASHLAND SCRAPERS	1
Serial Number	1
How to Order Parts	2
Parts - Transport Locks (TS) 155-200	3
Instruction: Operation and Maintenance	4
Safety Guidelines	5
TS Assembly	6
Front Frame Assembly (180)	7
Apron Assembly (180)	8
Bowl & Frame Assembly (180)	9
Bowl & Frame Assembly I-180TS2	11
Assembly - Push Off (180)	12
Assembly - Wheel Rear (180) R.4-13	14
Hitch Assembly - Swivel (#A125224)	15
Apron Cylinder (#A125257) 5" X 13"	17
Lift Cylinder (#A125044) 5 1/2" X 20"	18
Push Off Cylinder (#A125178) 4" X 60"	19
Hydraulic Manifold (#A125174)	21
Hydraulic Valve Ports Assembly	22
Hydraulic Valve Seals	23
Hydraulic Plumbing (I-180TS2)	24
Parts - Hydraulic Plumbing (I-180TS2) Illustration	25
Parts - Hydraulic Plumbing (I-180TS2) Illustration	26
Hydraulic Hoses (I-180TS2)	27
Parts - Hydraulic Hoses (I-180TS2) Illustration	28
Illustration: Hydraulic Schematic: I-180TS2	29
Parts - Nitrogen over Hydraulic Accumulator	30
Decals	31
Decals Illustration (I-180TS2)	32
Grease Locations 180TS2	33
Maintenance Check list	34
Pushing the Earthmover	35
Tire Service	36
Torque Specifications	37
Troubleshooting	38
Warranty Statement	39

Table of Contents

Alphabetized Listing

A	
Apron Assembly (180)	8
Apron Cylinder (#A125257) 5" X 13"	17
ASHLAND SCRAPERS	1-39
Assembly - Push Off (180)	12
Assembly - Wheel Rear (180) R.4-13	14
B	
Bowl & Frame Assembly (180)	9
Bowl & Frame Assembly I-180TS2	11
D	
Decals	31
Decals Illustration (I-180TS2)	32
F	
Front Frame Assembly (180)	7
G	
Grease Locations 180TS2	33
H	
Hitch Assembly - Swivel (#A125224)	15
How to Order Parts	2
Hydraulic Hoses (I-180TS2)	27
Hydraulic Manifold (#A125174)	21
Hydraulic Plumbing (I-180TS2)	24
Hydraulic Valve Ports Assembly	22
Hydraulic Valve Seals	23
I	
Illustration: Hydraulic Schematic: I-180TS2	29
Instruction: Operation and Maintenance	4
L	
Lift Cylinder (#A125044) 5 1/2" X 20"	18
M	
Maintenance Check list	34
P	
Parts - Hydraulic Hoses (I-180TS2) Illustration	28
Parts - Hydraulic Plumbing (I-180TS2) Illustration Front	25
Parts - Hydraulic Plumbing (I-180TS2)	26
Parts - Nitrogen over Hydraulic Accumulator	30
Parts - Transport Locks (TS) 155-200	3
Push Off Cylinder (#A125178) 4" X 60"	19
Pushing the Earthmover	35
S	
Safety Guidelines	5
Serial Number	1
T	
Tire Service	36
Torque Specifications	37
Troubleshooting	38
TS Assembly	6
W	
Warranty Statement	39

ASHLAND SCRAPERS

Serial Number

WELCOME TO OUR NEW CUSTOMERS!

Thank you for your purchase of an Ashland scraper and the confidence you have placed in us to handle your earthmoving projects. Years of research, testing and successful application have been spent to ensure quality and maximum performance for our customers. Please read and understand this manual before attempting to attach or operate this scraper. This manual should always remain with the machine. Be sure and fill out and send in the owners registration form at the beginning of this manual, or you may fill out the form on-line by going to ashlandind.com and click on "Register your Machine" at the bottom of the page.

SCRAPER ID NUMBER

The serial number plate for the scraper is located on the right rear area of the scraper. The letter and numbers stamped identify the serial number, model number and capacity of the scraper. Please record this serial number for use in ordering parts, warranty issues and to trace your equipment if it is ever stolen.

References to serial number breaks on parts are located in the manual with a reference sequence of XXXXX-XXXXX. The beginning number records the serial number start of the use of that part. The ending number is the final serial number use of the part within this machine.



ASHLAND SCRAPERS

How to Order Parts

IMPORTANT

Parts must be ordered through your local authorized ASHLAND dealer.
Be sure to state MODEL and SERIAL NUMBER of your machine, PART NUMBER,
DESCRIPTION and QUANTITY needed.

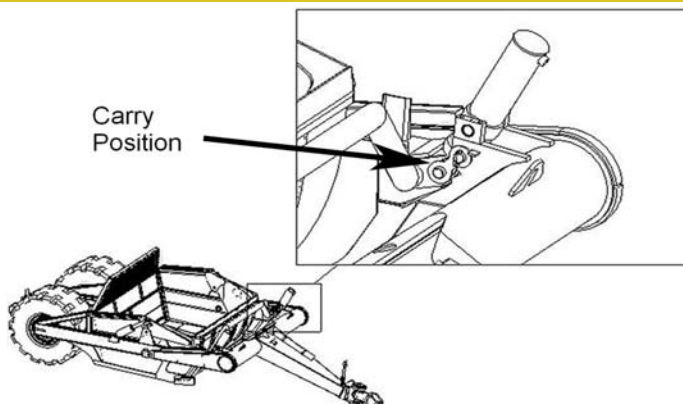
Unless this is done, we cannot provide prompt service or assure shipment of the correct parts.



Ashland Industries weldable replacement parts are available to rebuild, modify or update your scraper to current factory specifications.

ASHLAND SCRAPERS

Parts - Transport Locks (TS) 155-200



Storage Position
Figure 2

KEY	PART	DESCRIPTION
2	A123309-83	Transport Lock (155TS2-200TS4)

IMPORTANT

Please locate red Transport Links and remove prior to operation. Retract Lift Cylinder Circuit, Remove Safety Snap Pin, Remove link and replace into storage position as shown in figure 2.

Reinstall Safety Snap Pins.

ASHLAND SCRAPERS

Instruction: Operation and Maintenance

Thank you for choosing Ashland for your scraper needs. Your Ashland scraper is a durable piece of equipment and with proper care will yield many years of trouble free operation. However, the life of your scraper can be severely shortened by poor maintenance. You must follow consistent maintenance practices and use good quality grease and hydraulic oil (compatible with the power unit's hydraulic system) to insure the longer, most productive use from your scraper

Before starting a job, make sure Diggers Hot Line has been contacted and all underground utilities have been properly located (electric, phone and pipelines). Have a clear understanding of all local, OSHA and MSHA rules that apply to the job. Beware of your environment and keep others a safe distance from the machine while familiarizing yourself with the machine's controls. The scraper requires a power source with **TWO** 4-way (double acting) hydraulic control valves.

Your scraper should be greased at all points where grease fittings are provided. Connect hydraulic hoses to the tractor and retract lift cylinders to **REMOVE TRANSPORT LOCK PINS**. Next, extend and retract all cylinders several times to force out any air from the hydraulic cylinders and lines. Check the oil levels in the tractor hydraulic system and add to maintain the proper level. Care should be used when adding oil or when disconnecting any oil line to keep all dirt out of the oil as dirt is a major factor in the failure of hydraulic components.

When your scraper is placed into operation, the operator will have to "feel out" the amount of depth of cut to obtain maximum loading efficiency. This is usually accomplished by taking a lesser and more uniform cut; however, some soil conditions such as loose sand may require a "pumping action" obtained by taking successive deep cuts and lifting out of cut as the tractor begins to lose power or traction.

- After 10 hours work, all bolts should be checked and tightened if necessary.
- Every 10 hours all grease fittings should be lubricated.
- After 50 hours work, all bolts should be rechecked and tightened if necessary. Check wheel bearings and adjust if necessary.
- After 300 hours work, clean and repack wheel bearings and replace, if necessary, cutting edges, worn pins, etc.

ASHLAND SCRAPERS

Safety Guidelines



SAFETY SIGNAL WORDS: Please note the use of signal words such as DANGER, WARNING, and CAUTION paired with the safety messages on your scraper. The appropriate signal word for each safety message has been selected using the following guidelines:

- **DANGER:** Indicates an imminently hazardous situation that, if not avoided, will result in death or serious injury. This signal word is limited to the most extreme situations—typically for machine components which, for functional purposes, cannot be guarded.
- **WARNING:** Indicates a potentially hazardous situation that, if not avoided, could result in death or serious injury. For example, hazards that are exposed when guards are removed. This signal word may also be used to alert against unsafe practices.
- **CAUTION:** Indicates a potentially hazardous situation that, if not avoided, may result in minor or moderate injury. This signal word may also be used to alert against unsafe practices.

Operator safety is a main concern in designing and developing equipment. Designers and manufacturers include as many safety features as possible. However, every year many accidents occur which could have been avoided by extra thought and a more careful approach to handling equipment. You, the operator, can avoid many accidents by observing the precautions in this section. To avoid personal injury, study the following precautions and insist those working with, or for you, follow them.

Replace any CAUTION, WARNING, DANGER or instruction safety decal that is not readable or are missing. Location of such decals is indicated in this booklet.

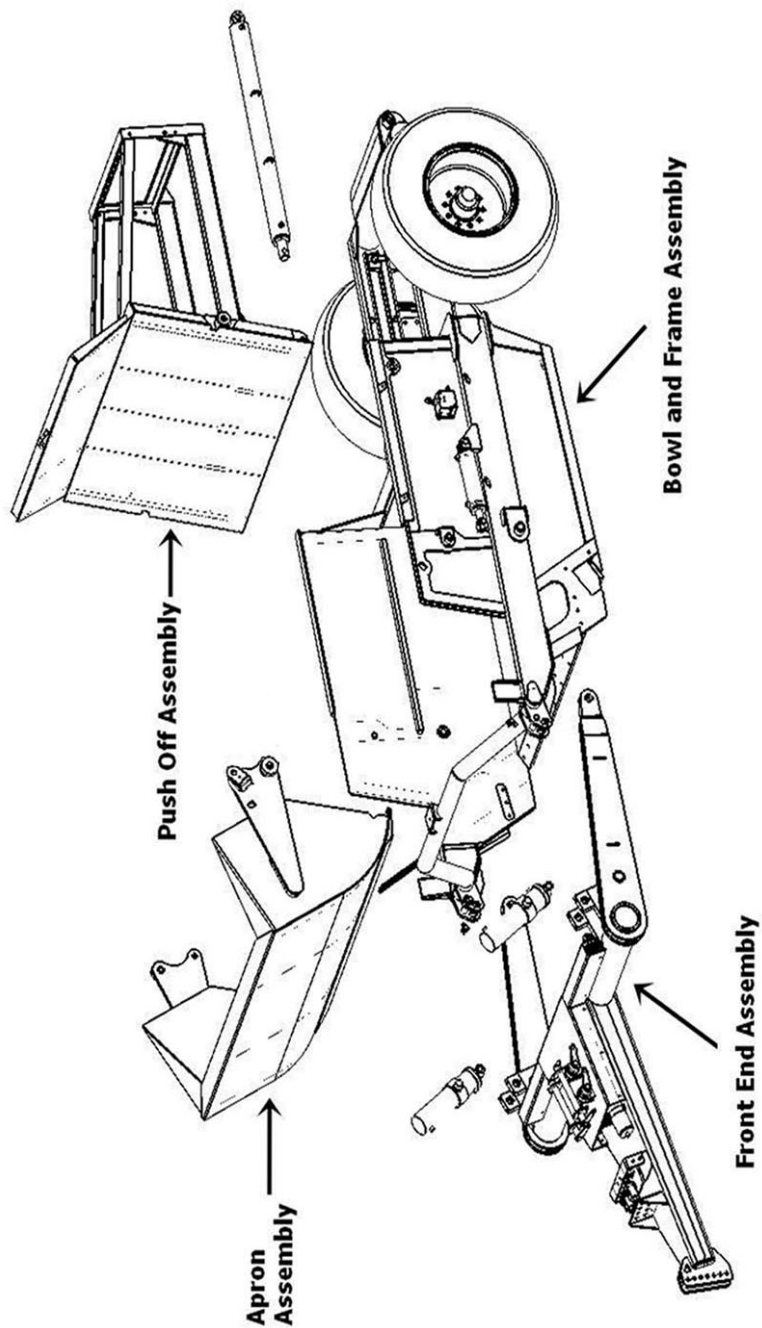
Do not attempt to operate this equipment under the influence of drugs or alcohol.

Review the safety instructions in the operator's manual with all users annually.

This equipment is dangerous to children and persons unfamiliar with its operation. Operators should be responsible adults familiar with machinery and trained in the equipment's operations. **Do not allow persons to operate or assemble this unit until they have read this manual and the owner's manual and have developed a thorough understanding of the safety precautions and how the scraper works.**

ASHLAND SCRAPERS

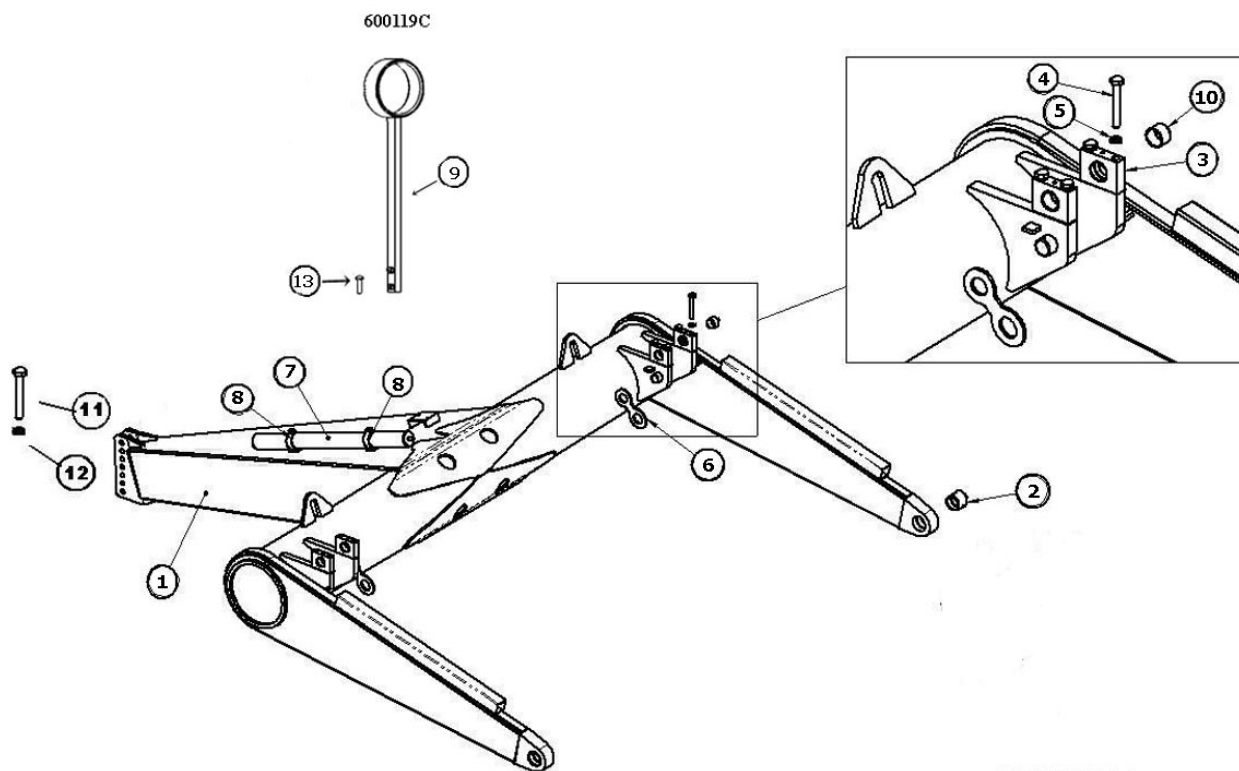
TS Assembly



STS300A001

ASHLAND SCRAPERS

Front Frame Assembly (180)

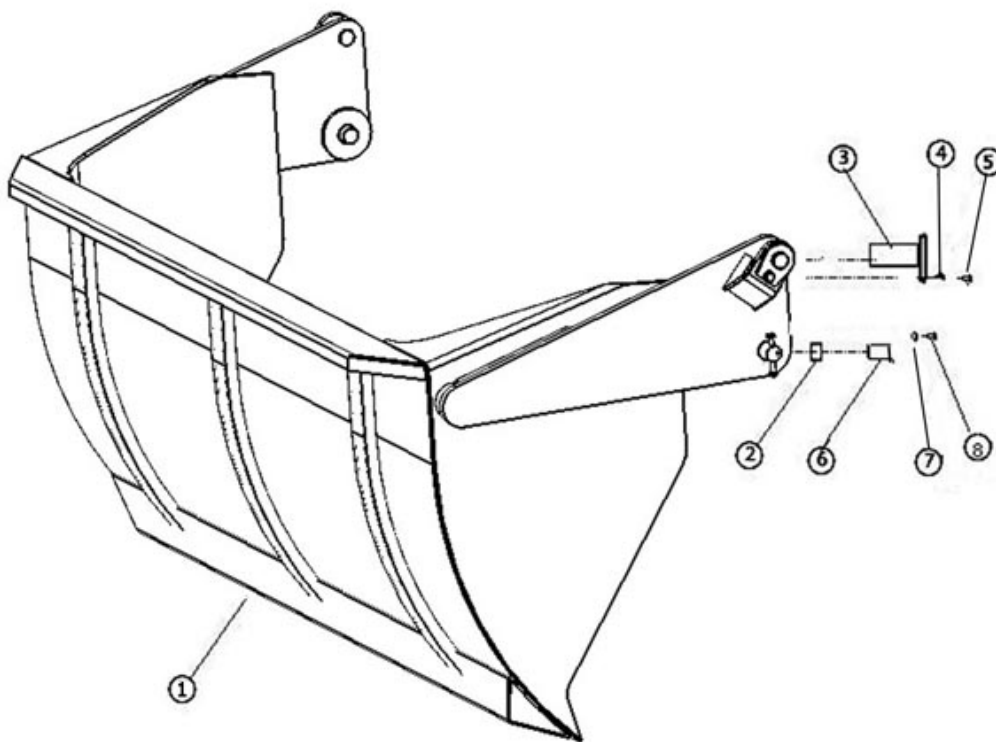


M180T300A003-4

KEY	PART	DESCRIPTION	SN 180TS2
1	A123320	Front Section	
2	A123320-08	3" ID x 3-1/2" OD x 3" L bronze bushing	
3	A123456	Trunion mount block	
4	AFB-00039	"Bolt, 3/4" NC x 5-1/2" long, gr. 8"	
5	AFW-00002	3/4" lock washer	
6	A123320-20	Travel Lock	
7	A125005	Accumulator	
8	A125009	Mounting brackets	
9	600119C	Hose Holder	22375-XXXXX
10	A125179	Trunion Bushing	
11	AFB-00021	Hitch Bolt: 1x5-1/2 NC Gr 8	
12	AFN-00037	1" NC Locknut	

ASHLAND SCRAPERS

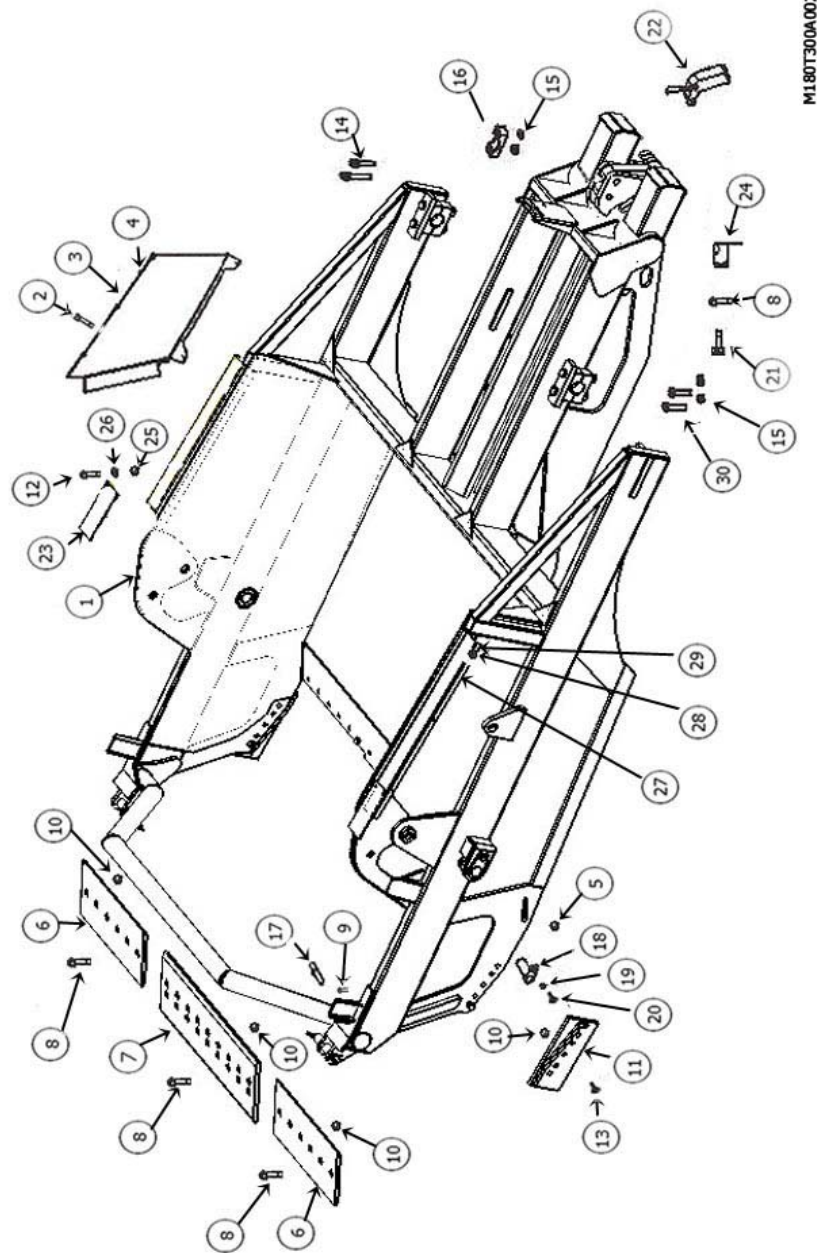
Apron Assembly (180)



M180T300A001

KEY	PART	DESCRIPTION	SN 180TS2
1	A123322	Apron Model 180	
2	A125257-35	Bushing 2" ID Ball Swivel	22656-XXXXX
2	A125249	Bushing 2" ID Ball Swivel w/Graph. Plugs	XXXXX-22655
3	A123322-14	"Pin: 2" x 4 1/4" L, (for apron cyl rod end)	
4	A123358	Flanged Bolt Bushing	
5	AFB-00079	Bolt: 5/8" X 1 1/2"	
6	A123321-113	Apron Pivot Pin w/grease zerk	
7	AFN-00018	1/2" lock nut	
8	AFB-00012	1/2" Bolt 1/2 X 4 1/2"	

Bowl & Frame Assembly (180)



M180T300A002

KEY	PART	DESCRIPTION
1	A123321	Bowl and Frame Assembly 180
2	AFB-00094	Flanged Bolt: 3/8" NC X 1" L
3	A123369-1L	Dirt Shield - Left Side
4	A123369-1R	Dirt Shield - Right Side
5	A125018	Bushing: 2 3/8" OD X 2" ID X 1 1/4"L
6	A125103	Left & Right Straight Corner Blade
7	A125072	Center Blade, 18" Straight, Reversible
	A125072-SER	Center Blade, 18" Double Serrated, Reversible
8	PB1P-NC-100-0275	Plow Bolt: 1" NC X 2 3/4" L
9	AFP-00001	Cotter Pin



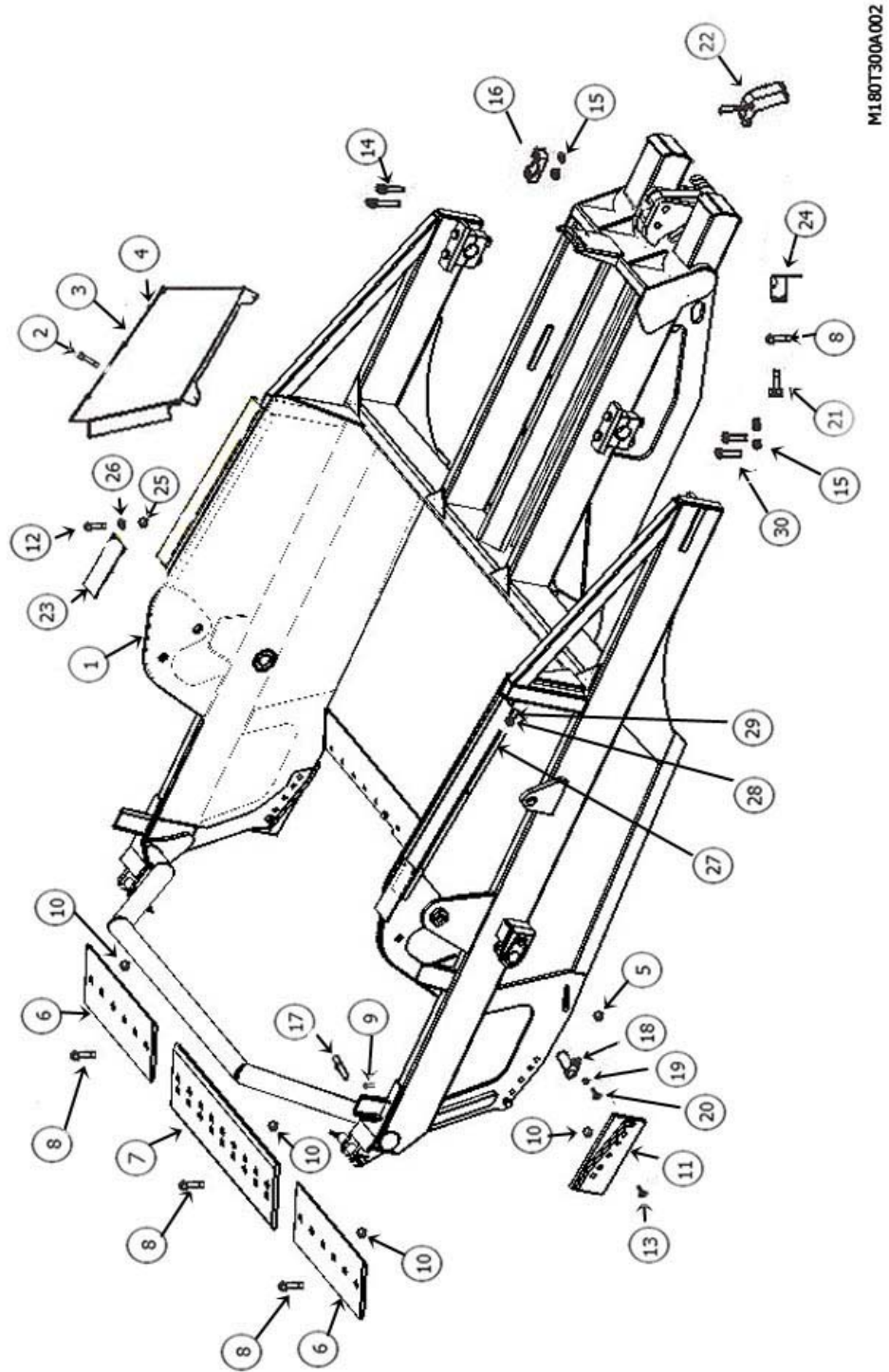
ASHLAND SCRAPERS

Bowl & Frame Assembly (180)

KEY	PART	DESCRIPTION
10	AFN-00012	Nut: 1" NC
11	A123357	Bank Shaver/Router Bit, Reversible, L & R
12	AFB-00027	Bolt: 3/8 X 1 1/2"
13	AFB-00018	Bolt: 1" NC X 3" L
14	AFB-00109	Bolt: 1 1/4" NF X 9" L
15	AFN-00032	Nut: 1 1/4" NF
16	A123321-65	Axle Mount
17	A123335	Lift Cylinder Pin
18	A23321-09	Main Frame Pin
19	A123358	Flanged Bolt Bushing
20	AFB-00079	Bolt: 5/8" X 1 1/2" L
21	A123321-98	Pins
22	A123321-89	Pin Keeper
23	A123369-13	Dirt Shield Flap
24	A125006	Safety Snap Pin 1/4 X 2 1/4
25	7450	3/8 NC Nut
26	AFW-00010	3/8 Flat Washer
27	A125020	3/2" Grease Line
28	A125026	3/8 NF Bulkhead Nut
29	A125019	Grease Fitting 1/4 - 28 x 54" L
30	AFB-00122	Bolt: 1 1/4 NF X 10" Gr. 8

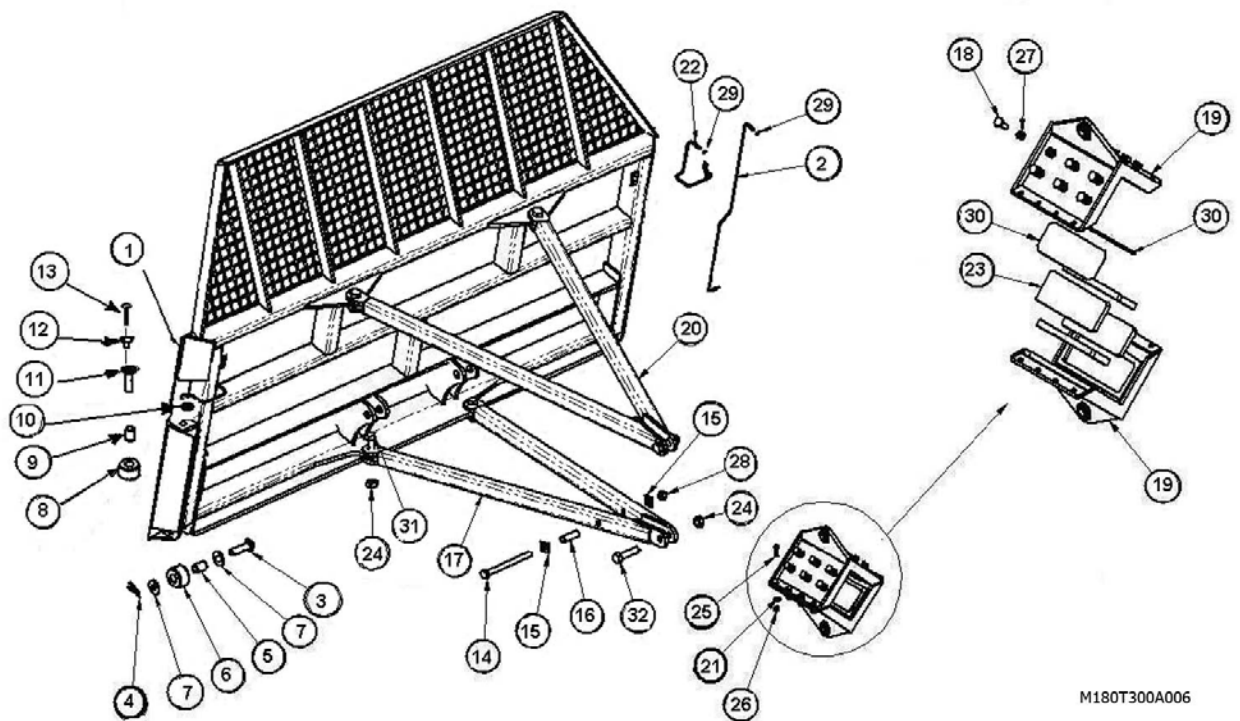
ASHLAND SCRAPERS

Bowl & Frame Assembly I-180TS2



M180T300A002

Assembly - Push Off (180)



M180T300A006

KEY	PART	DESCRIPTION
1	A123323	Pushoff Ejector Assembly
2	A125023	Grease line, Outside floor roller 48"
3	A123323-21	Pin: 1-1/4" x 4-1/8" long
4	AFP-00001	Cotter Pin: 1/4" x 3"
5	A10163	Bushing: 1-3/4" O.D. x 1-1/4" I.D.
6	A10164	Roller
7	AFW-00015	Washer
8	A123323-24	Roller
9	A123323-24B	Bushing: 2" ID X 2.5" OD
10	A123323-09	Spacer
11	A123323-23	Pin: Upper Roller 2" x 7 7/8"
12	A123358	Pin Keeper
13	AFB-00079	Bolt: 5/8" X 1 1/2"
14	AFB-00103	1 x 12 Bolt
15	AFW-00019	Wedge Washer
16	A123323-48	Wedge Spacer



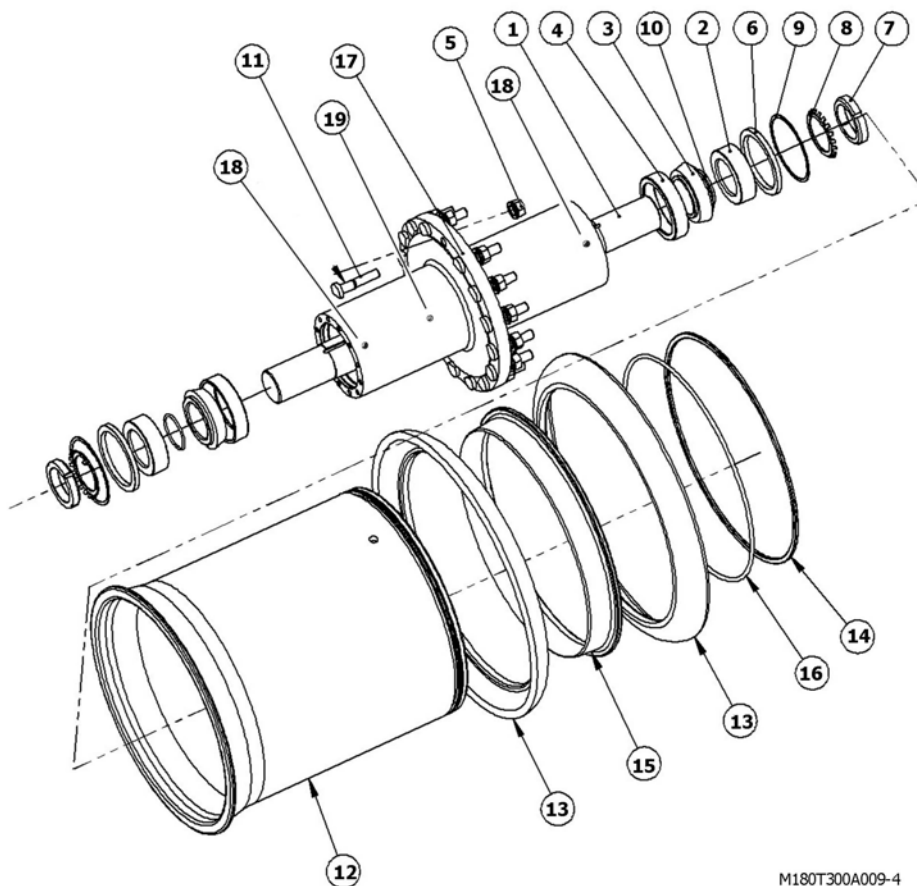
ASHLAND SCRAPERS

Assembly - Push Off (180)

KEY	PART	DESCRIPTION
17	A123323-35	Bottom Support
18	AFB-00060	Bolt: 3/4" NF x 2" long
19	A123364	Slide Guide Box
20	A123323-36	Top Support
21	8110	5/8 Lock Washer
22	A125022	"Grease line, v-roller 18"
23	A123364-08	Plastic slide
24	AFN-00009	1 1/4 NF Locknut
25	6684	5/8 x 2 NC gr. 8 Bolts
26	7530	5/8 NC gr. 8 Nuts
27	AFN-00023	JamNut: 3/4" NF
28	AFN-00001	NF Nut Lock 1" NF
29	A125026	Bulk Head Nut
30	A123364-3	Shim Plate
31	AFB-00076	Bolt: 1 1/4" NF X 4"
32	AFB-00075	Bolt: 1 1/4" NF X 5"

ASHLAND SCRAPERS

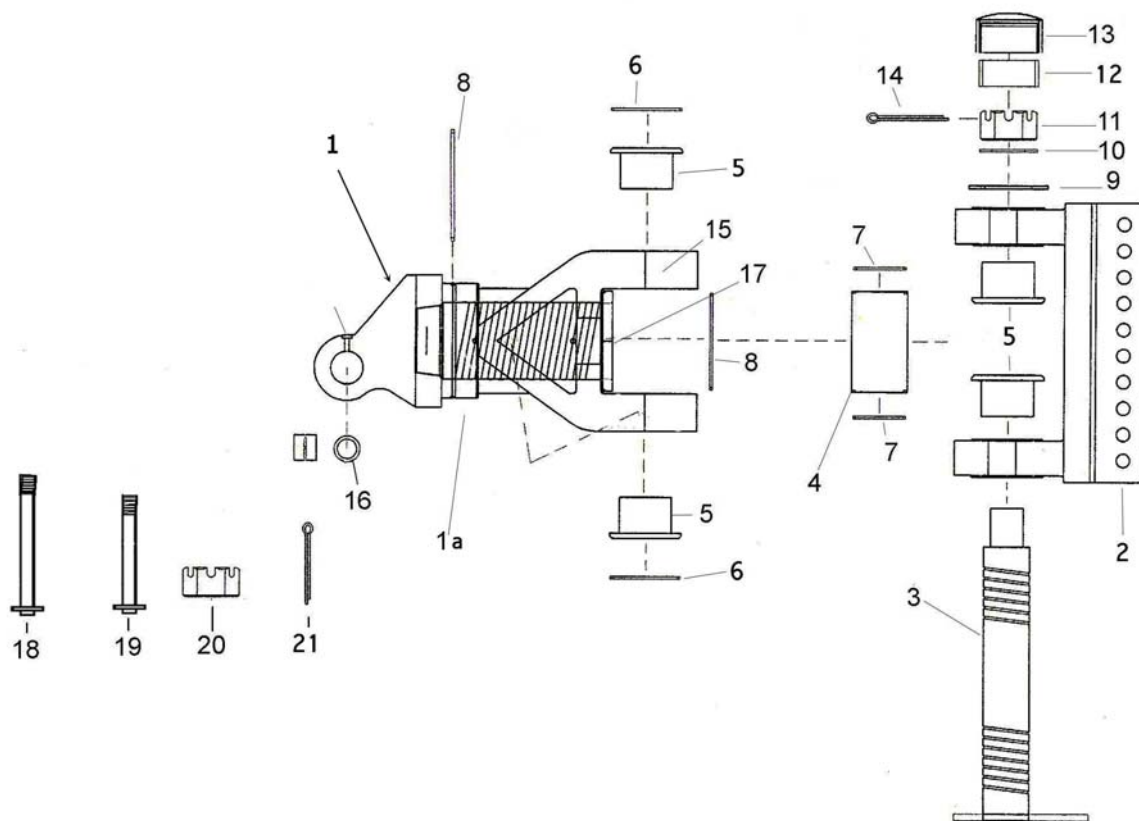
Assembly - Wheel Rear (180) R.4-13



M180T300A009-4

KEY	PART	DESCRIPTION	SN 180TS2
1	500319	Axle	22609-XXXXX
2	500327	Spacer-Bearing	22609-XXXXX
3	A125016	Bearing	
4	A125017	Bearing	
5	A125229	Nut-22mm	22609-XXXXX
6	A125232	Seal	22609-XXXXX
7	A125233	Nut-Lock	22609-XXXXX
8	A125234	Washer-Lock	22609-XXXXX
9	A125235	Ring-Retaining	22609-XXXXX
10	AHS-00148	O-Ring	22609-XXXXX
11	A125237	Stud	22609-XXXXX
12	500318	Rim Shell 25 x 25	22609-XXXXX
13	A12041	Side Ring 25 x 25	
14	A12042	Lock Ring 25 x 25	
15	A12043	Bead Seat Band	
16	A12047	O-Ring 3/8" x 25"	
17	500347	Hub	22609-XXXXX
18	14505	Fitting: Grease	
19	A125466	Vent: Pressure Relief	

Hitch Assembly - Swivel (#A125224)



STS350P006

KEY	PART	DESCRIPTION
1	A125224	Swivel Hitch: 360 deg. cast
1a	A125224-01	Yoke: A-Frame Swivel
2	A125224-03	Bracket: 10 Hole
3	A125224-04	Pin: Main Vertical
4	A125224-05	Spacer Tube
5	A125224-07	Bushing
6	A125224-08	Seal: O-ring
7	A125224-09	Seal: O-ring
8	A125224-10	O-ring
9	A125224-13	Spacer: 6"
10	A125224-14	Washer: 2 1/2"
11	A125224-15	Nut: Slotted 2 1/2" NC
12	A125224-16	Sleeve: 2" Rubber
13	A125224-17	Cap: For Vertical Pin
14	A125224-18	Pin: Cotter 3/8 X 5"
15	14505	Grease Fitting Straight
16	A125057-02A	Bushing
17	AHF-00027	Zerk 45 deg.
18	A123299-08	Pin: Four Ear Drawbar to Hitch 1 1/2" x 15 5/8"L
19	A123299-07	Pin: Two Ear Drawbar to Hitch 1 1/2" X 12 5/8"L
20	AFN-00014	Nut: 1 1/2" Slotted
21	AFP-00001	1/4" X 3" Cotter Pin



PHONE : 715-682-4622 Fax: 715-682-9717

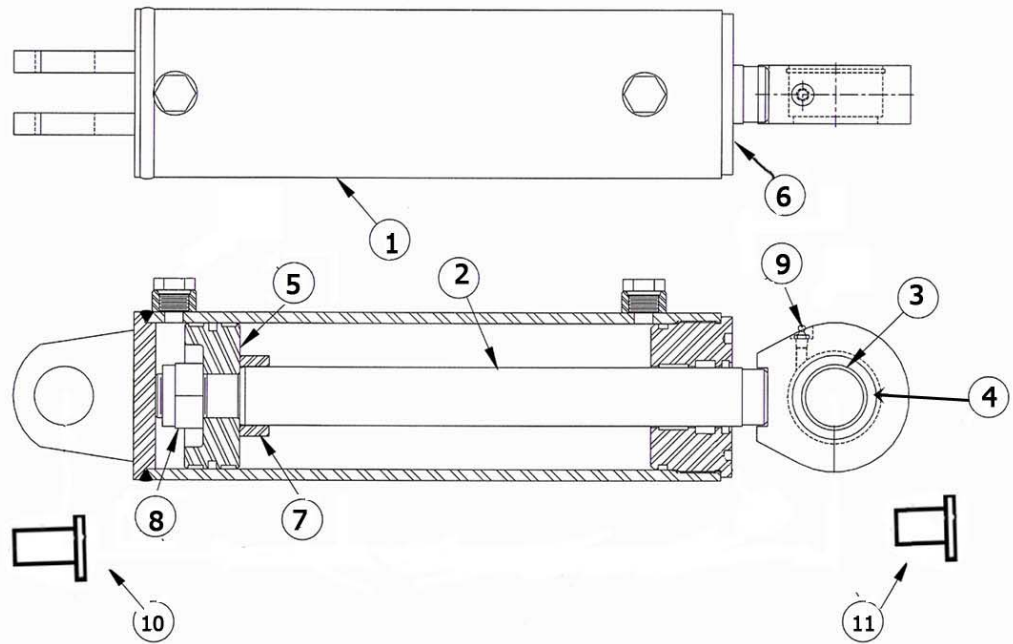
ASHLAND SCRAPERS

Hitch Assembly - Swivel (#A125224)

KEY	PART	DESCRIPTION
22	A123299-08	4 Ear Drawpar Hitch Pin
23	AFN-00014	Slotted castle Nut

ASHLAND SCRAPERS

Apron Cylinder (#A125257) 5" X 13"

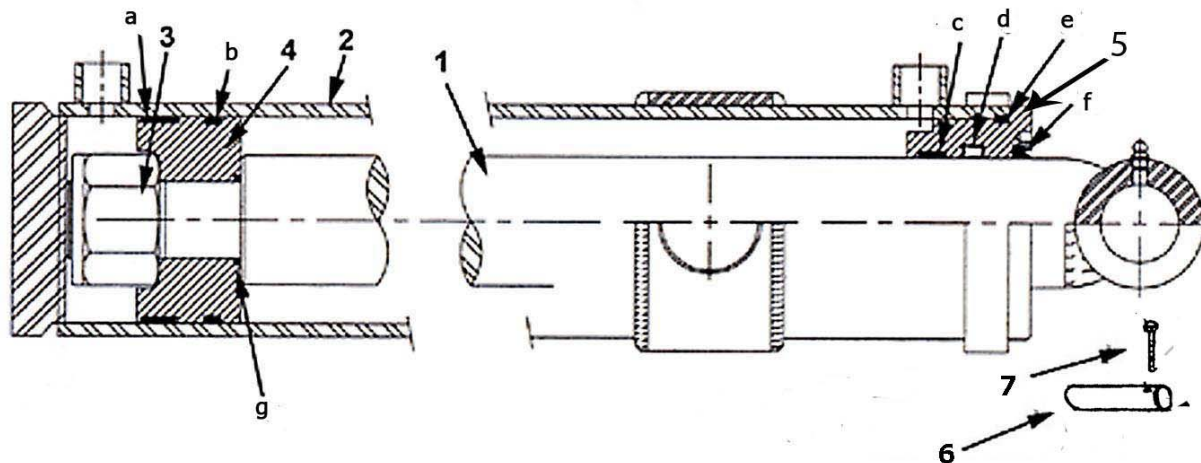


A350P009

KEY	PART	DESCRIPTION
1	A125257	APRON CYLINDER (5" X 13")
1	A125257-10	Barrel
2	A125257-20	Rod
3	A125257-35	Uniball Bushing
4	A125057-36	Snap Ring
5	A125257-30	Piston
6	A125257-31	Head
7	A125257-32	Spacer
8	A125257-33	1 1/2" Toplock Nut
9	14505	Grease Zerk
	A125257-40	Seal Kit
10	A123322-09	Apron Cyl Base End Pin
11	A123322-14	Apron Cyl Rod End Pin

ASHLAND SCRAPERS

Lift Cylinder (#A125044) 5 1/2" X 20"



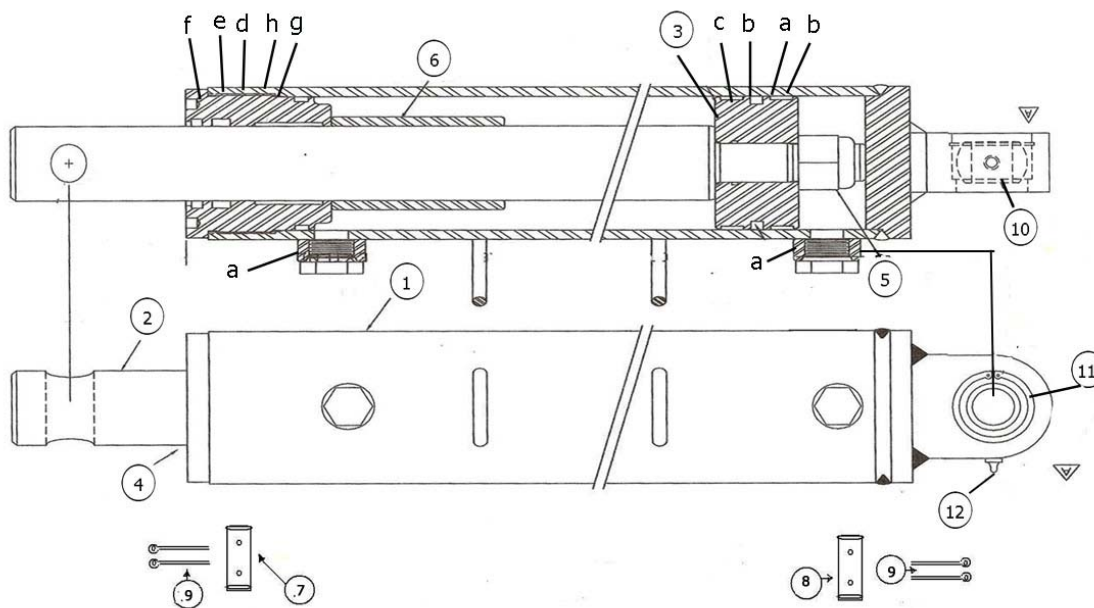
A350P018

KEY	PART	DESCRIPTION
	A125044	LIFT CYLINDER (5" X 20")
1	A123326-1	Piston Rod: 2-1/2"
2	A125044-02	"Barrel Weldment, 5-1/2"
3	A125159-34	1-3/4 NF Locknut
4	A125044-04	"Piston, 5-1/2"
5	A125044-05	"Gland, 5-1/2"
6	600221	Pin for Lift Cyl. Rod End
7	AFB-00128	1/2 X 1 Gr. 5 Bolt
	A125044-40	Seal Kit (Items a-g)
a	A123324-6	Rod Seal
b	A123324-3	Wear Band ID for Gland
c	A125044-10	"Wear Ring, 5-1/2"
d	A125044-15	"Piston Seal, 5-1/2"
e	A123324-10	"O-Ring, ID of Piston"
f	A125044-20	"O-Ring, OD of Gland"
g	A123324-7	Rod Wiper

ASHLAND SCRAPERS

Push Off Cylinder (#A125178) 4" X 60"

4" X 60" Stroke



A350P003

KEY	PART	DESCRIPTION
	A125178	PUSH OFF CYLINDER (4" X 60")
1	A123360-01	Barrel
2	A123360-02	Rod
3	A123360-03	Piston
4	A123360-04	Head Gland
5	A123360-05	Lock Nut
6	A123360-07	Spacer Sleeve
7	A123323-38	Rod End Pin 5-1/16 x 1-1/2
8	600157	Barrel End Pin 1 1/2 X 4 1/8 L
9	AFB-00128	1/2 NC X 1" Gr. 5 Bolt
10	A125178-35	Bushing
11	A125178-36	Snap ring
12	14505	Grease Fitting 1/8 NPT st
	A123360-16	Seal Kit (including a-h)
a		Piston Seal
b		Wear Ring
c		O-Ring
d		Wear Ring
e		Rod Seal
f		Wiper



PHONE : 715-682-4622 Fax: 715-682-9717

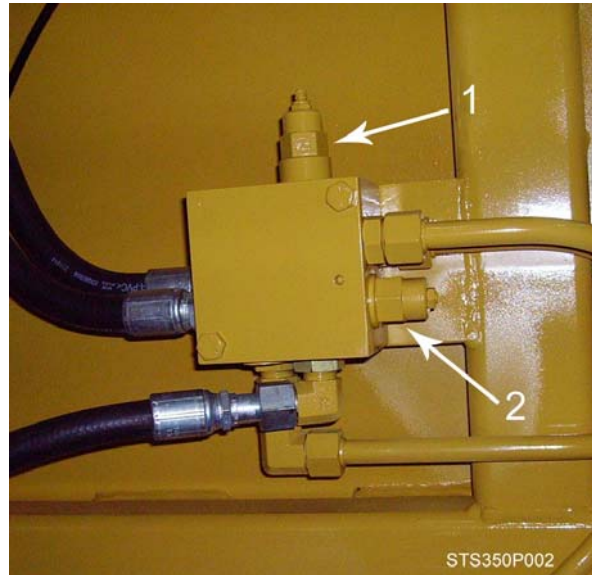
ASHLAND SCRAPERS

Push Off Cylinder (#A125178) 4" X 60"

KEY	PART	DESCRIPTION
g		O-Ring
h		Back-up Ring

ASHLAND SCRAPERS

Hydraulic Manifold (#A125174)



KEY	PART	DESCRIPTION
1	A125162-02	PUSHOFF SEQUENCE CARTRIDGE
2	A125162-01	COUNTER BALANCE CARTRIDGE

SETTING THE APRON AND PUSHOFF VALVE

The manifold block containing the pushoff sequence valve cartridge and apron sequence valve cartridge is used to control two hydraulic circuits with one hydraulic remote. When the tractor hydraulic remote is activated, oil flows first to the apron cylinders until they are fully extended. Once the cylinders are fully extended, the apron circuits' hydraulic pressure begins to increase. Once the pressure threshold is surpassed (which is adjustable. See adjustment section), the sequence valve diverts the oil flow to the pushoff's hydraulic circuit. Once the push off is completely extended the operator then reverses the tractors hydraulic remote. The counterbalance valve will hold the apron open until the push off is fully retracted. The Apron sequence valve then opens and allows the apron to close.

Setting the valves:

STEP 1 PUSHOFF SEQUENCE VALVE

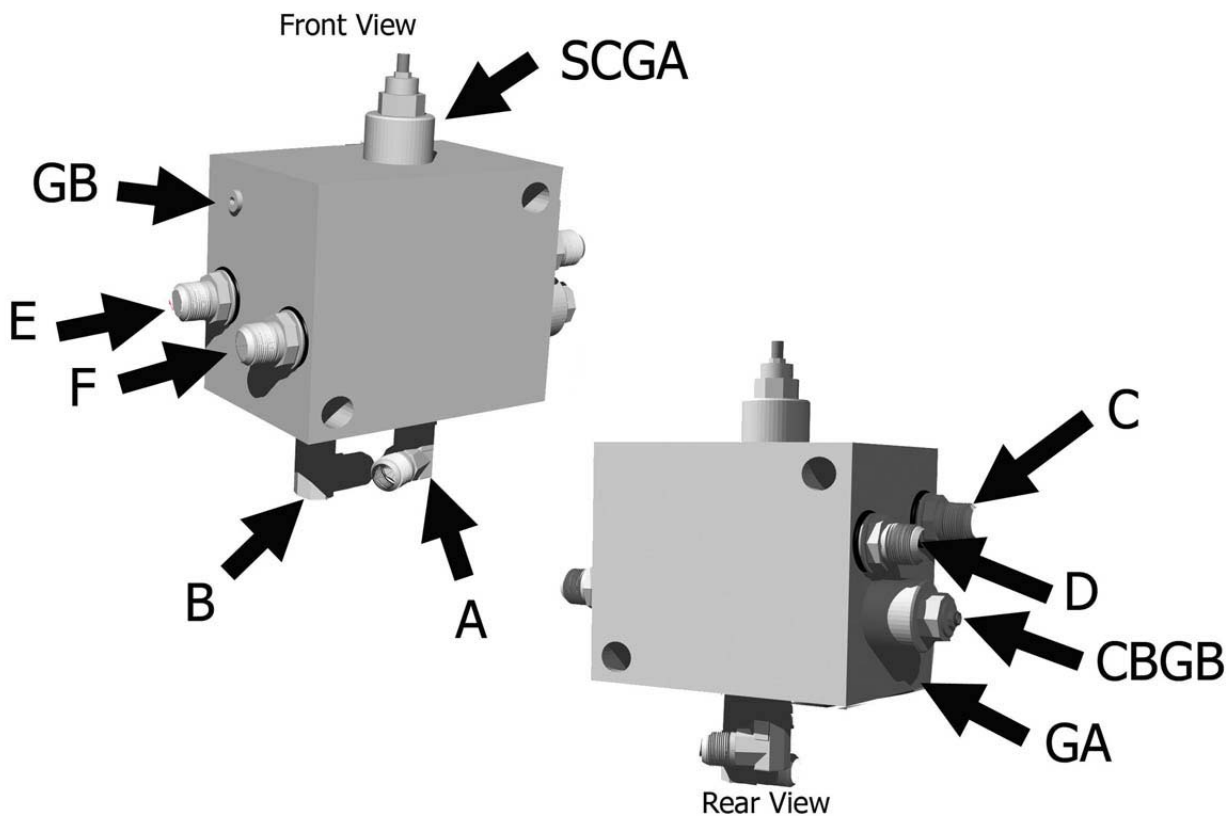
Loosen the lock nut (9/16") on the sequence valve cartridge. Turn the setscrew (4mm) clockwise until the front apron rises before the push-off begins to advance. (Earthmover should be empty) Turn the adjustment screw an additional 1/4 turn clockwise and tighten jam nut.

STEP 2 COUNTER BALANCE VALVE

Loosen the lock nut (9/16") on the counterbalance valve cartridge. Turn the setscrew (4mm) counter-clockwise until the apron holds in a raised position while rear gate is being retracted. Turn adjustment screw an additional 1/4 turn, tighten jam nut. DO NOT tighten adjusting screw more than necessary.

ASHLAND SCRAPERS

Hydraulic Valve Ports Assembly



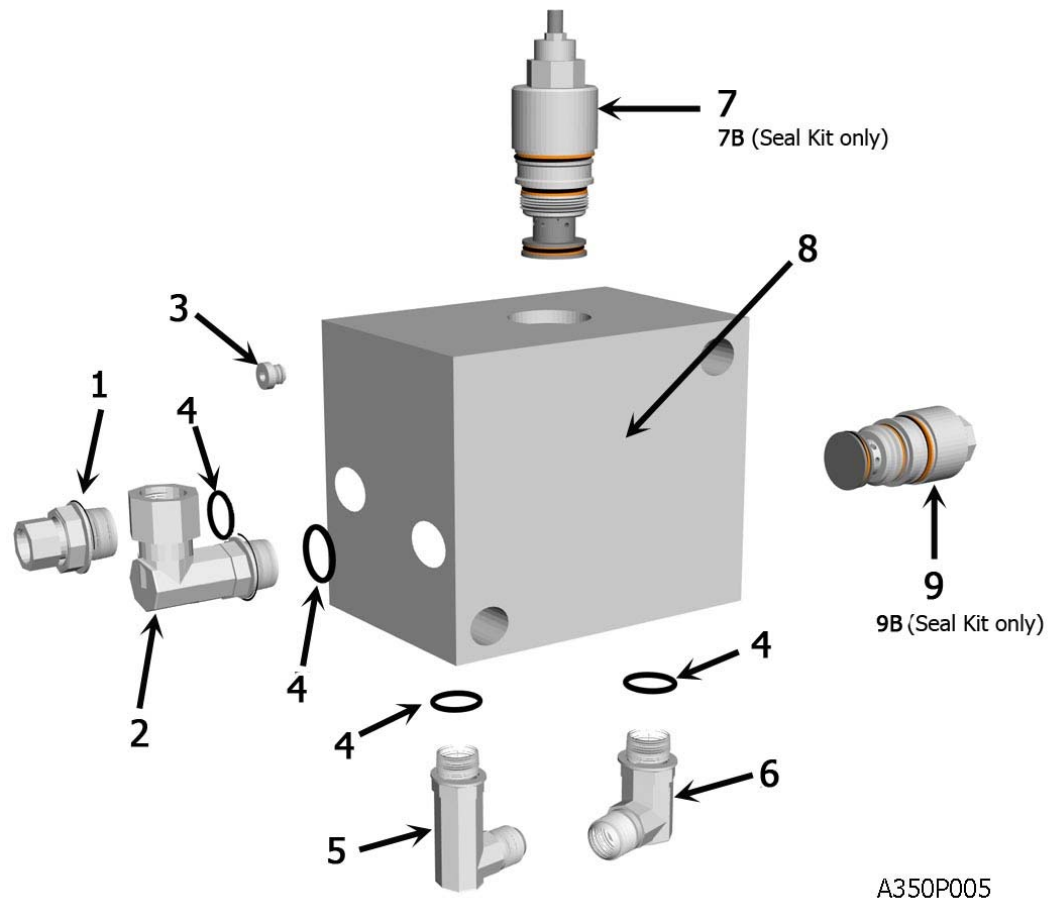
The lettering for the port locations are stamped on the block

A350P010

KEY	PART	DESCRIPTION
A		Supply Line
B		Pushoff Cyl., (Rod End)-Apron Cyl., Right side (Base End)-Supply Line
C		Pushoff Cylinder, (Base End)
D		Apron Cylinder, Right side, (Rod end)
E		Apron Cylinder, Left side, (Base end)
F		Apron Cylinder, Left side, (Rod end)
CBGB		Counterbalance Valve, adjustable
SCGA		Sequence Valve, adjustable
GA		Pressure test port
GB		Pressure test port

ASHLAND SCRAPERS

Hydraulic Valve Seals



A350P005

KEY	PART	DESCRIPTION
1	AHA-00043	Adapter: Str. Sw. 1 1/16 M ORB X 1/2 FP
2	AHA-00048	Adapter: 90 Deg. Swiv. 1 1/6 M ORB X 1/2 FP
3	AHA-00046	6 ORB Plug
4	AHS-00153	O-Ring for 12 M ORB Fitting
5	AHA-00047	Adapter: 90 Deg. XL 3/4 MJX 1 1/6 M ORB
6	AHA-00044	Adapter: 90 Deg. 3/4 MJ X 1 1/6 M ORB
7	A125162-02	Valve: Sequence Cartridge for Ver. III & IV
8	A125174	Valve: Manifold Block IV Body
9	A125162-01	Valve: Counterbalance Cartridge for Ver. III & IV
9B	A125162-01 KIT	Seal Kit for A125162-01 Valve Cartridge
7B	A125162-02 KIT	Seal Kit for A125162-02 Valve Cartridge

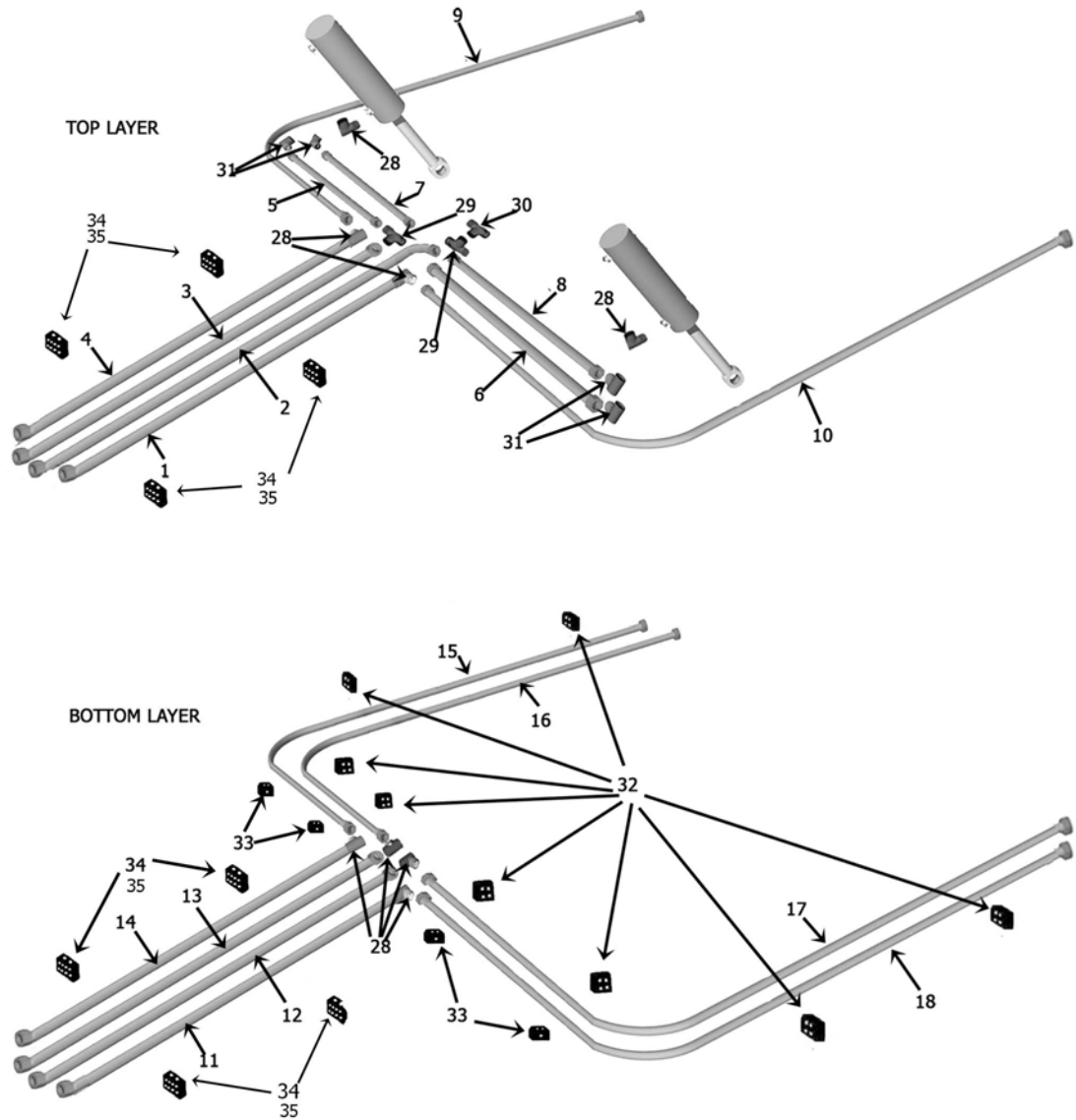
ASHLAND SCRAPERS

Hydraulic Plumbing (I-180TS2)

KEY	PART	DESCRIPTION
1	A125116-1	Tubing, Front, Top, Far Left
2	A125118	Tubing, Front, 2nd From Left
3	A125117-1	Tubing, Front, Top, 2nd From Right
4	A125116-2	Tubing, Front, Top, Far Right
5	A125121	Tubing, Top, Outer Right Side
6	A125126	Tubing, Top Left, Outer Side
7	A125122	Tubing, Top, Right Side, Inner
8	A125127	Tubing, Top Left Side, Inner
9	A125123-1	Tubing, Top Right Side
10	A125123-2	Tubing, Top Left Side
11	A125117-2	Tubing, Front, Bottom, Outside, Left
12	A125120-1	Tubing, Front, Bottom, Inside, Left
13	A125120-2	Tubing, Front, Bottom, Inside, Right
14	A125117-3	Tubing, Front, Bottom, Outside, Left
15	A125123-3	Tubing, Bottom, Outer, Right Arm
16	A125123-4	Tubing, Inner Right Side
17	A125123-5	Tubing, Bottom, Inner, Left Side
18	A125123-6	Tubing, Bottom, Outer, Left Side
19	A123191	Tubing, Top, Inner Left Side of Bowl
20	A125190	Tubing, Wraps around Back of Bowl
21	A125137	Tubing, Bottom, Around Left Side of Bowl
22	A125138	Tubing, Middle Back
23	A125139	Tubing, Around Right Side of Bowl
24	A125131L	Tubing, Back, Inner Left
25	A125132L	Tubing, Back, Outer Left
26	A125131R	Tubing, Back, Inner Right
27	A125132R	Tubing, Back, Outer Right
28	AHA-00068	Adapter: 90 deg. 12 MORS X 12 MORB
29	AHA-00066	Adapter: T 12 MORS X 3
30	AHA-00071	Adapter: T 12 MORS X 12 FORSX X 12 MORS
31	AHA-00067	Adapter: 90 deg. 12 MORS X 12 MORS
32	AHL-00002	Clamp: Hyd. Line 2 Tube
33	AHL-00001	Clamp: Hyd. Line - 1 Tube
34	AHL-00022	Clamp: Hyd. Line - 2 Tube Stack
35	AHL-00002	Clamp: Hyd. Line - 2 Tube Assy.

ASHLAND SCRAPERS

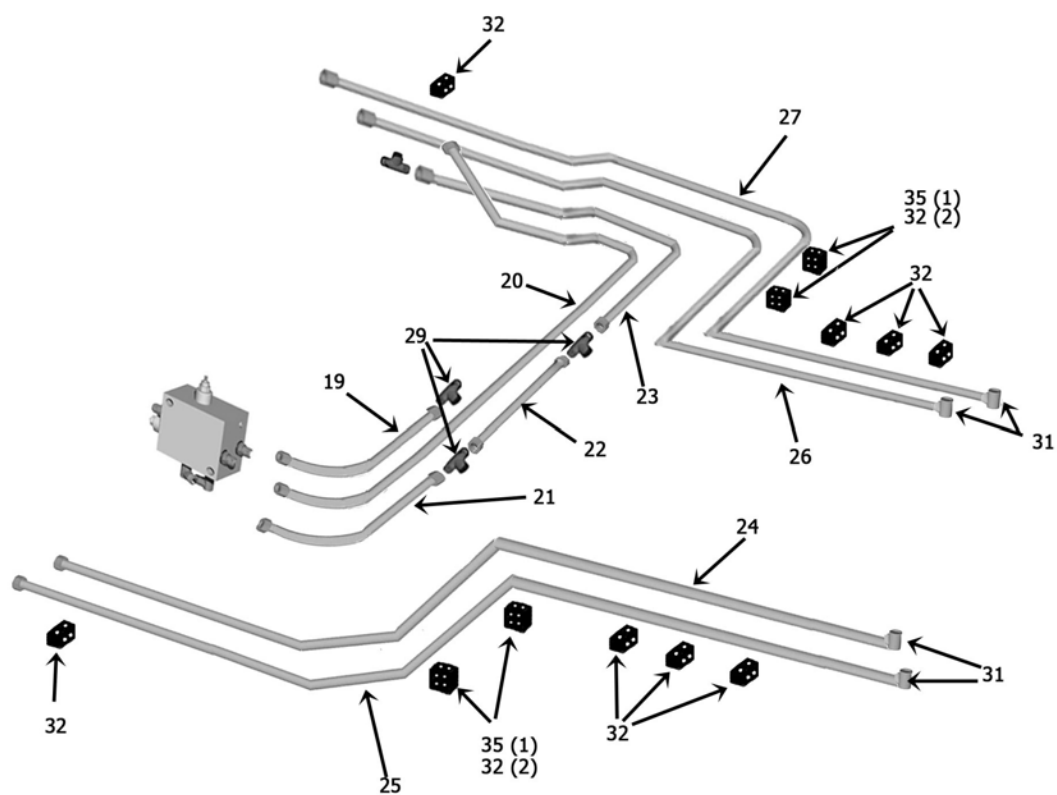
Parts - Hydraulic Plumbing (I-180TS2) Illustration Front



M180T400H007

ASHLAND SCRAPERS

Parts - Hydraulic Plumbing (I-180TS2) Illustration Rear



M180T400H008



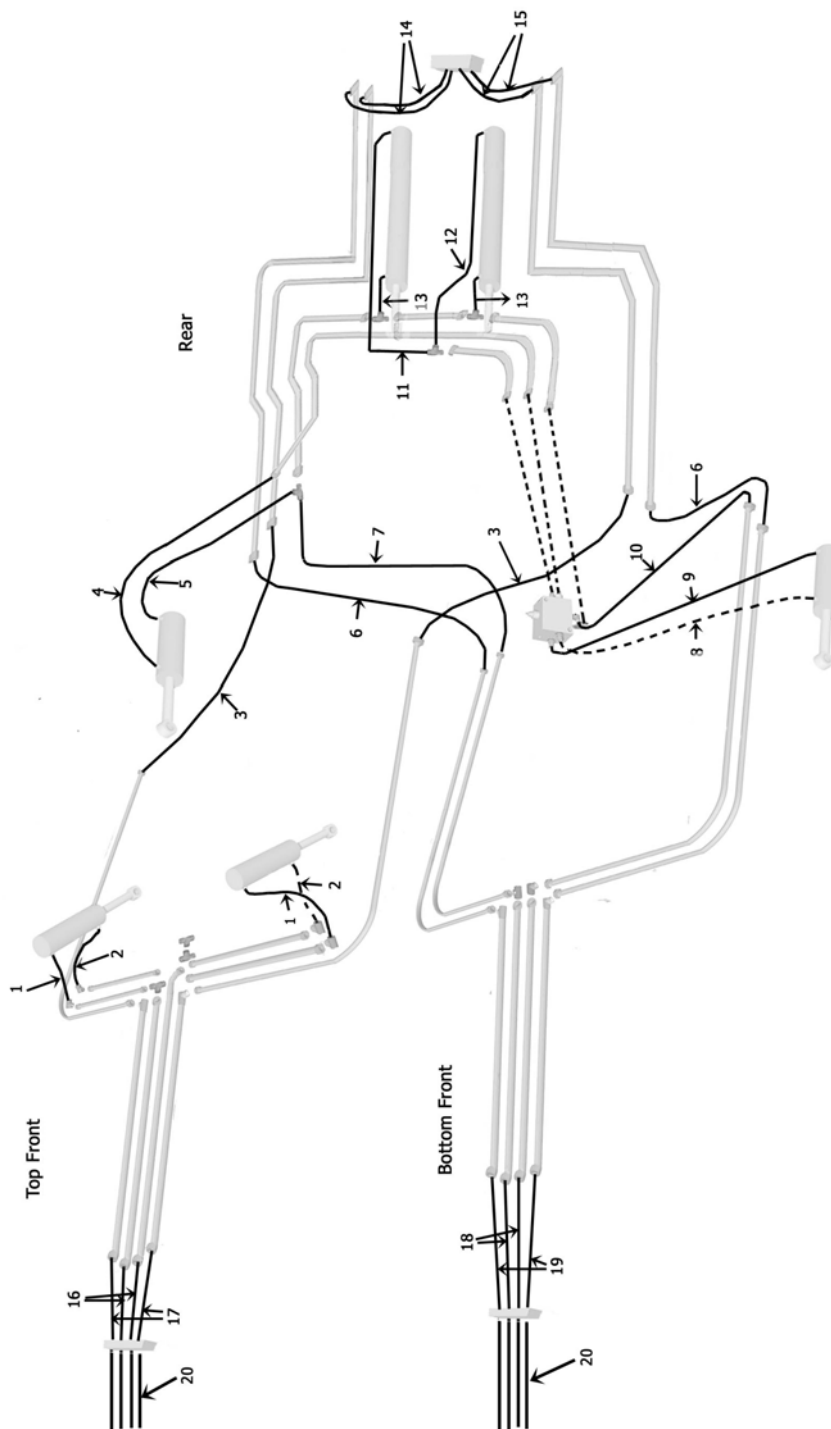
ASHLAND SCRAPERS

Hydraulic Hoses (I-180TS2)

KEY	PART	DESCRIPTION
1	A125297	Barrel End, R. Lift Cyld. to Top Front Tube - 23.5"
2	A125298	Rod End, R. Lift Cyld. To Top Rear Tube - 31"
3	A125299	L & R Front Top Tube to Rear Top Tube - 48"
4	A125300	Rod End, R. Apron Cyld. to Rear Inner Top Tube - 38"
5	A125301	Barrel End, R. Apron Cyld. to "T" at Rear Outside Top Tube -34"
6	A125302	L & R Rear Outside Bottom to Front Outside Bottom Tube - 43"
7	A125303	Rear Outside Top Tube @ "T" to Front Inside Bottom Tube - 52"
8	A125304	Rod End .. Apron Cyld, to "F" Port on Valve-38.5"
9	A125305	Barrel End. L. Apron Cyld. To "E" Port on Valve - 31"
10	A125306	"A" Port on Valve to Front Bottom Inside Tube - 66"
11	A125307	Barrel End R. Pushoff Cyld. to Top R. Side of "T" - 104"
12	A125308	Barrel End L. Pushoff Cyld. to Center Top "T" - 77.5"
13	A125309	Rod End L & R Pushoff Cyld. to Bottom "T" - 24.5"
14	A125310	Rear Inside Tube to Top Rear Valve Connector-22"
15	A125311	Rear Outside Tube to Rear Valve Connector-19"
16	A125312	Front Top Inside Tube to Bulkhead - 31"
17	A125313	Front Top Outside Tube to Bulkhead - 32.5"
18	A125314	Front Bottom Inside Tube to Bulkhead - 29.5"
19	A125315	Front Bottom Inside Tube to Bulkhead - 30.5"
20	A125181	3/4 X 85" Connecting Hose Bulkhead to Tractor
20	A125239	3/4 X 85" Connecting Hose Bulkhead to Tractor (Brake Unit)

ASHLAND SCRAPERS

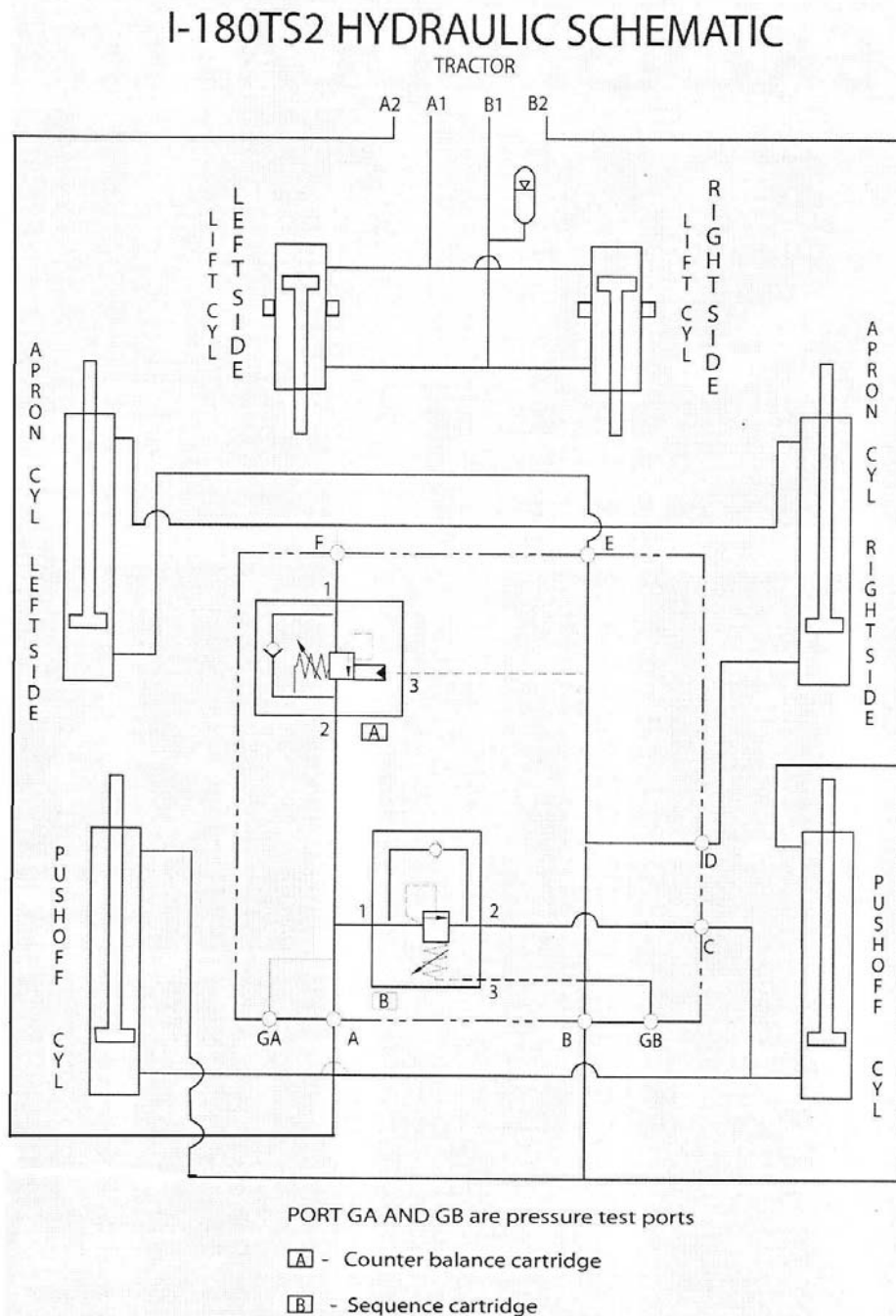
Parts - Hydraulic Hoses (I-180TS2) Illustration



M180T400H010

ASHLAND SCRAPERS

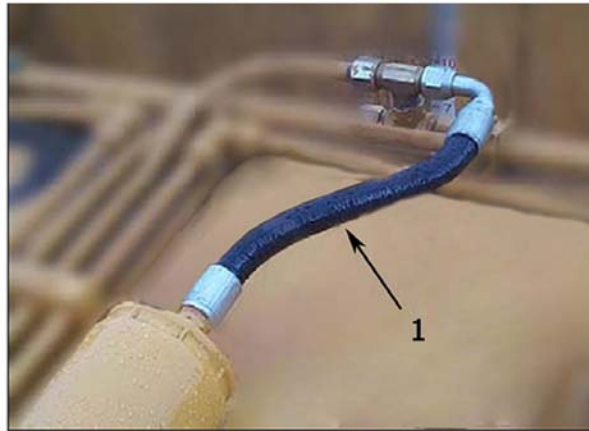
Illustration: Hydraulic Schematic: I-180TS2



M180T400H012

ASHLAND SCRAPERS

Parts - Nitrogen over Hydraulic Accumulator



STS350P004

KEY	PART	DESCRIPTION
1	A155H67	Hose, 3/4" x 16" MORB with sweep
2	A125009	Bracket, Welded with bolts
3	A125005	Accumulator Cylinder



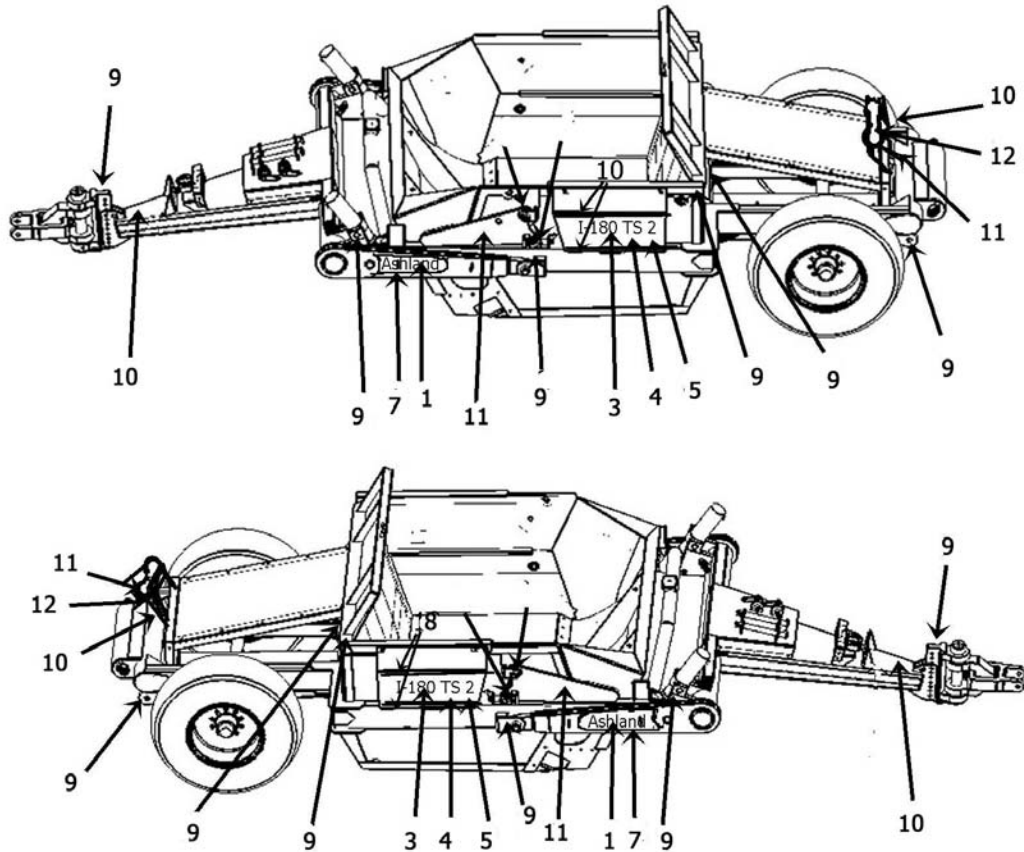
ASHLAND SCRAPERS

Decals

KEY	PART	DESCRIPTION
1	ADS-00001	Large Ashland
2	ADS-00002	Small Ashland
3	ADS-00012	I-180
4	ADS-00005	TS
5	ADS-00025	2
7	ADS-00003	Black Wedge, Gradient
8	ADS-STRIPEKIT	Black Stripe Kit
9	ADS-00019	Grease
10	750464	High Pressure Fluid Hazard
11	ADS-00011	Pinch Point
12	ADS-00015	Caution - Tandem Use

ASHLAND SCRAPERS

Decals Illustration (I-180TS2)



11

DANGER	
To prevent serious injury or death from pinching:	
<ul style="list-style-type: none"> Keep all persons and objects clear while any part of this machine is in motion. 	



12

CAUTION
When operating scrapers of different sizes in tandem, always attach the largest to the tractor. Failure to do this will damage scrapers and void the warranty.

10

WARNING	
HIGH-PRESSURE FLUID HAZARD	
To prevent serious injury or death:	
<ul style="list-style-type: none"> Relieve pressure on system before repairing or adjusting or disconnecting. Wear proper hand and eye protection when searching for leaks. Use wood or cardboard instead of hands. Keep all components in good repair. 	



M180T100SD004

ASHLAND SCRAPERS

Grease Locations 180TS2



Trunion Cylinder Points



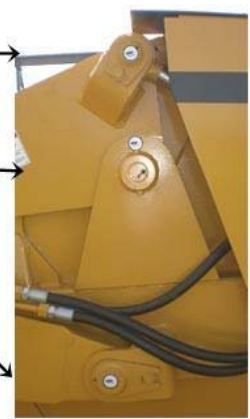
Hitch Points



Grease Line - Rear



Apron Rod End



Apron Pivot

Main Frame Pivot



Hold Down and Floor Rollers



Rear Push-Off Cylinder (Inside)



ASHLAND SCRAPERS

Maintenance Check list

1. Grease all zerks.
 - a) Every 8 hours of operation.
 - b) See Lubrication Points section on next page.

2. Greasing the hubs.
 - a) Re-pack wheel bearings after 300 hrs of operation.
 - b) Completely clean grease out of hub and bearings every 1200 hours of operation.

3. Check tire pressure.
 - a) 20.5 - 25, 12-ply tire requires a tire pressure of 35-40 psi on a rear tire, 40-50 on a front tire.

4. Check all pins for signs of wear.
 - a) Daily

5. Check wheel lug nut torque.
 - a) After first 2 hours of operation.
 - b) Recheck daily for next 2 weeks.
 - c) Tighten wheel lug nuts in a star pattern.
 - d) Torque wheel lug nuts to 120 to 130 ft-lbs.

6. Check and retighten all bolts.
 - a) After initial 10 hours of use.
 - b) Again after 50 hours of use.
 - c) See Torque Specifications on next page.

7. Inspect cutting edges.
 - a) Daily
 - b) Replace cutting edges when center blade has been worn to approximately 6" and side edges worn to approximately 4".



CAUTION! Failure to replace worn cutting edges may result in unnecessary wear to the earthmover sides and floor.

Note: Please specify left or right "L" shaped cutting edges when ordering replacements. Left or right side parts are determined by viewing from rear of the scraper.

ASHLAND SCRAPERS

Pushing the Earthmover



PUSHING THE EARTHMOVER

This scraper was designed to be pushed when equipped with the optional push-bar. However, Ashland Industries, Inc. **STRONGLY** recommends using extreme caution when pushing the earthmover to prevent any unnecessary damage.

CAUTION! The earthmover must be pushed in a straight line with a maximum of a 100 hp dozer. Do not ram or jar the earthmover while pushing and push at a constant speed.

ASHLAND SCRAPERS

Tire Service



The task of servicing tires and wheels can be extremely dangerous and should be performed by trained personnel only, using the correct tools and following specific procedures. Do not attempt to mount, demount or inflate a tire if you do not have the proper equipment and experience to perform the job. Call a qualified repair service to inspect the assembly and make necessary repairs. Failure to heed warnings could lead to serious injury or death.

Visually inspect tires and wheels daily. Carefully inspect any rim and tire assembly that has been run underinflated or flat before reinflating the tire to make sure there is no damage to either the rim or tire.

- ALWAYS wear personal protection equipment such as gloves, footwear, eye protection, hearing protection and head gear when servicing tire and wheel components.
- DO NOT operate with damaged rims, tire cuts or bubbles, missing lug bolts or nuts or damaged rims.
- ALWAYS maintain the correct tire pressure. NEVER exceed recommended tire inflation pressure.
- INSPECT any rim and tire assembly that has been run flat or severely underinflated before reinflating the tire. Damage to the rim and tire may have developed.
- NEVER inflate a tire that has lost air pressure or has been run flat without determining and correcting the problem.
- NEVER try to repair wheel, rim, or tire components parts. Parts that are cracked, worn, pitted with corrosion, or damaged must be discarded, and replaced with good parts.
- ALWAYS use approved tire and rim combinations for the model scraper that you have and verify that part numbers of components are correctly matched for the assembly.
- ALWAYS exhaust all air from the tire prior to demounting.
- ALWAYS place wheel and tire assemblies in restraining devices (safety cage) when inflating tires. Use a clip-on chuck and long extension hose to allow you to stand to the side of the tire and not in front of it.
- NEVER weld or cut on an inflated tire assembly. Welding heat can cause increased pressure which could result in tire explosion.
- ALWAYS use proper lifting techniques, and mechanized lifting aids to move heavy components and assemblies.
- NEVER leave a tire, wheel, or assembly unsecured in a vertical position.
- ALWAYS take care when moving tires and wheels that other people in the area are not endangered.

ASHLAND SCRAPERS

Torque Specifications

TORQUE SPECIFICATIONS

<i>Bolt Diameter</i>	<i>Torque Ft-lbs</i>		
1/4	12		
5/16"	25		
3/8"	45		
7/16"	70		
1/2"	110		
9/16"	150		
5/8"	220		
3/4"	380		
7/8"	600		
1"	900		
1-1/8"	1280		
<i>Lug Nuts</i>	85-100 /9 yd	450- 11/13 yd	750-15 yd & up

LUBRICATION

1. Grease all zerks every 8 hrs of operation with high quality, general-purpose grease.
 - a) Grease until grease flows from around pin.

Lubrication Points (see III.)

1. Hitch – Horizontal and vertical pins.
2. Lift Cylinders – Rod end & Trunion; Both left & right sides.
3. Front Arm Pivot Joint – Both left & right sides.
4. Apron Cylinders – Rod clevis pin; Both left & right sides.
5. Apron Pivot Pin – Both left & right sides.
6. Hold-down Rollers – Both left & right sides.
7. Floor Rollers – Both left & right sides.
8. Tapered Rollers – Both left & right sides.

ASHLAND SCRAPERS

Troubleshooting

Introduction

With proper care and maintenance, your Ashland Scraper will give many years of reliable service. When a situation arises where the earthmover performance is not satisfactory, this section will give some ideas on finding and correcting the problem. Consult your owners manual for additional troubleshooting help.

Grease zerk will not take grease.

1. Grease zerk plugged.
 - a) Remove and replace grease zerk.
 2. Pin is frozen.
 - a) Remove, clean, and inspect pin.
 - b) Replace pin if necessary.
 3. Bushing grease passage is not aligned with grease zerk.
 - a) Remove, clean, inspect, and realign bushing.
 - b) Replace bushing if necessary and realign.
-

Push-off rollers do not roll.

1. The rollers need lubrication.
 - a) Check zerk hole and grease.
 - b) Remove pin, clean, inspect, and replace if necessary.
 2. The roller bushing is worn out.
 - a) Remove roller assembly and replace bushing.
 - b) See parts manual.
-

Cylinders will not hold in preset position, i.e. the cylinder creeps.

1. Seals leaking internally.
 - a) Remove and replace seal kit.
-

Machine cuts unevenly.

1. Cutting edges worn unevenly.
 - a) Replace cutting edges.
 2. Improperly inflated tires.
 - a) Check air pressure in tires.
-



ASHLAND SCRAPERS

Warranty Statement

Limited Warranty Statement

Ashland Industries Inc. warrants each new product to be free from defects in material and workmanship. This warranty is applicable only for the normal service life expectancy of the product or components, not to exceed **six consecutive months** from the date of delivery of the new Ashland Industries product to the purchaser, or the date the product is first put into service via a rental agreement or other means, whichever occurs first.

The major components of swivel hitches used on Industrial series scrapers are warranted for three consecutive months from the date of delivery of the new Ashland Industries product to the purchaser, or the date the product is first put into service via a rental agreement or other means, whichever occurs first, except those components described below.

Genuine Ashland Industries Inc. replacement parts and components will be warranted for 30 days from date of purchase, or the remainder of the original equipment warranty period, whichever is longer.

Under no circumstances will it cover any merchandise or components thereof, which in the opinion of the company, has been subjected to misuse, unauthorized modification, alterations, an accident or if repairs have been made with parts other than those obtained through Ashland Industries Inc.

Ashland Industries Inc. in no way warrants Tires since their respective manufacturer warrants these items separately. Please call Ashland Industries Inc. to receive phone numbers of tire suppliers.

Ashland Industries Inc. in no way warrants wearable items such as cutting edges, front dolly wheel balls, socket halves, rollers, bushings, yoke hitch pins, hitch bushings, etc..

Our obligation under this warranty shall be limited to repairing or replacing, free of charge to the original purchaser, any part that, in our judgment, shall show evidence of such defect, provided further that such part shall be returned within 30 days from the date of failure to Ashland Industries Inc. routed through the dealer and distributor from whom the purchase was made, transportation charges prepaid. Upon warranty approval proper credits will be reimbursed for transportation.

This warranty shall not be interpreted to render Ashland Industries Inc. liable for injury or damages of any kind or nature to person or property. This warranty does not extend to the loss revenue, extra labor cost associated with downtime, substitute machinery, rental or for any other reason.

Except as set forth above, Ashland Industries Inc. shall have no obligation or liability of any kind on account of any of its equipment and shall not be liable for special or consequential damages. Ashland Industries Inc. make no other warranty, expressed or implied, and, specifically, Ashland Industries Inc. disclaims any implied warrant or merchantability or fitness for a particular purpose. Some states or provinces do not permit limitations or exclusions of implied warranties or incidental or consequential damages, so the limitations or exclusion in this warranty may not apply.

This warranty is subject to any existing conditions of supply which may directly affect our ability to obtain materials or manufacture replacement parts.

Ashland Industries Inc. reserves the right to make improvements in design or changes in specifications at any time, without incurring any obligation to owners of units previously sold.

No one is authorized to alter, Modify or enlarge this warranty nor the exclusion, limitations and reservations.

Ashland Industries Inc.
Warranty Department