



## PARTS MANUAL

ASHLAND LAND LEVELER  
14LL, 16LL, 18LL, 20LL

YEAR MODEL: 2201  
VERSION: 1.03

### TABLE OF CONTENTS

**1**  
Overview

**2**  
Structural

**3**  
Hydraulics

**4**  
Cylinders

**5**  
Electrical

**6**  
Decals

**7**  
Cutting  
Edges

14LL  
16LL  
18LL  
20LL



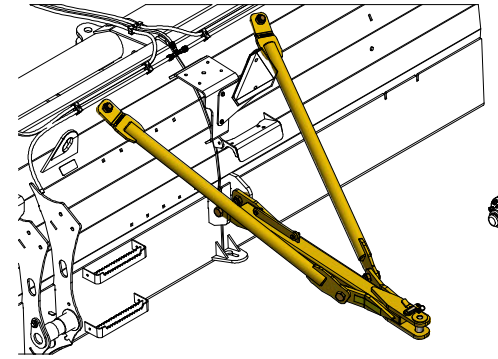
## SECTION 1.00

### OVERVIEW

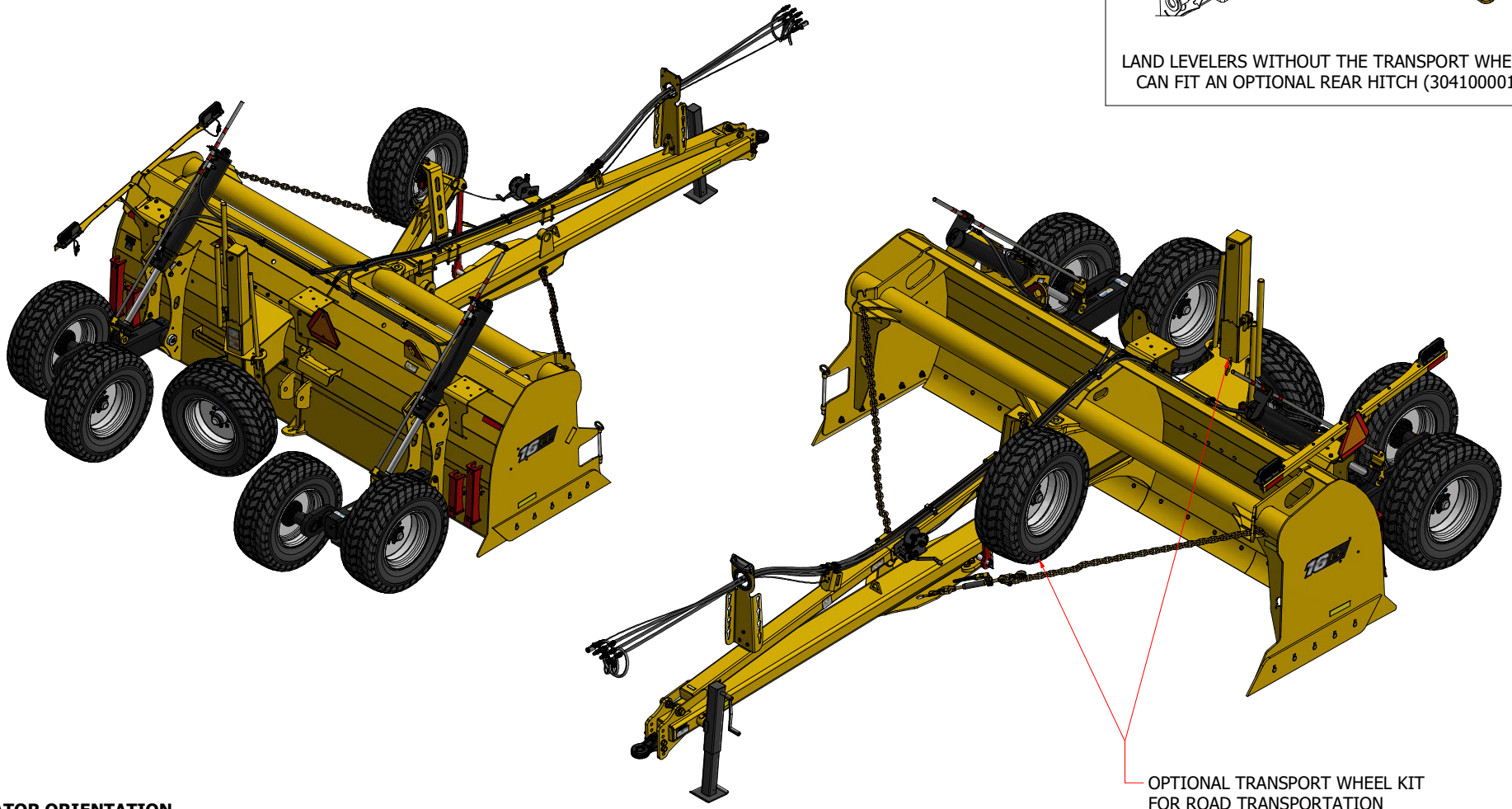
#### 2201 LAND LEVELER

THE OPTIONAL ROAD TRANSPORT WHEEL KIT COMES STANDARD-  
WITH THE 16LL, 18LL AND 20LL LAND LEVELERS.

THE 14LL LAND LEVELER DOES NOT FIT THE WHEEL TRANSPORT KIT.



LAND LEVELERS WITHOUT THE TRANSPORT WHEEL KIT  
CAN FIT AN OPTIONAL REAR HITCH (304100001 Kit)



OPTIONAL TRANSPORT WHEEL KIT  
FOR ROAD TRANSPORTATION

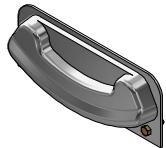
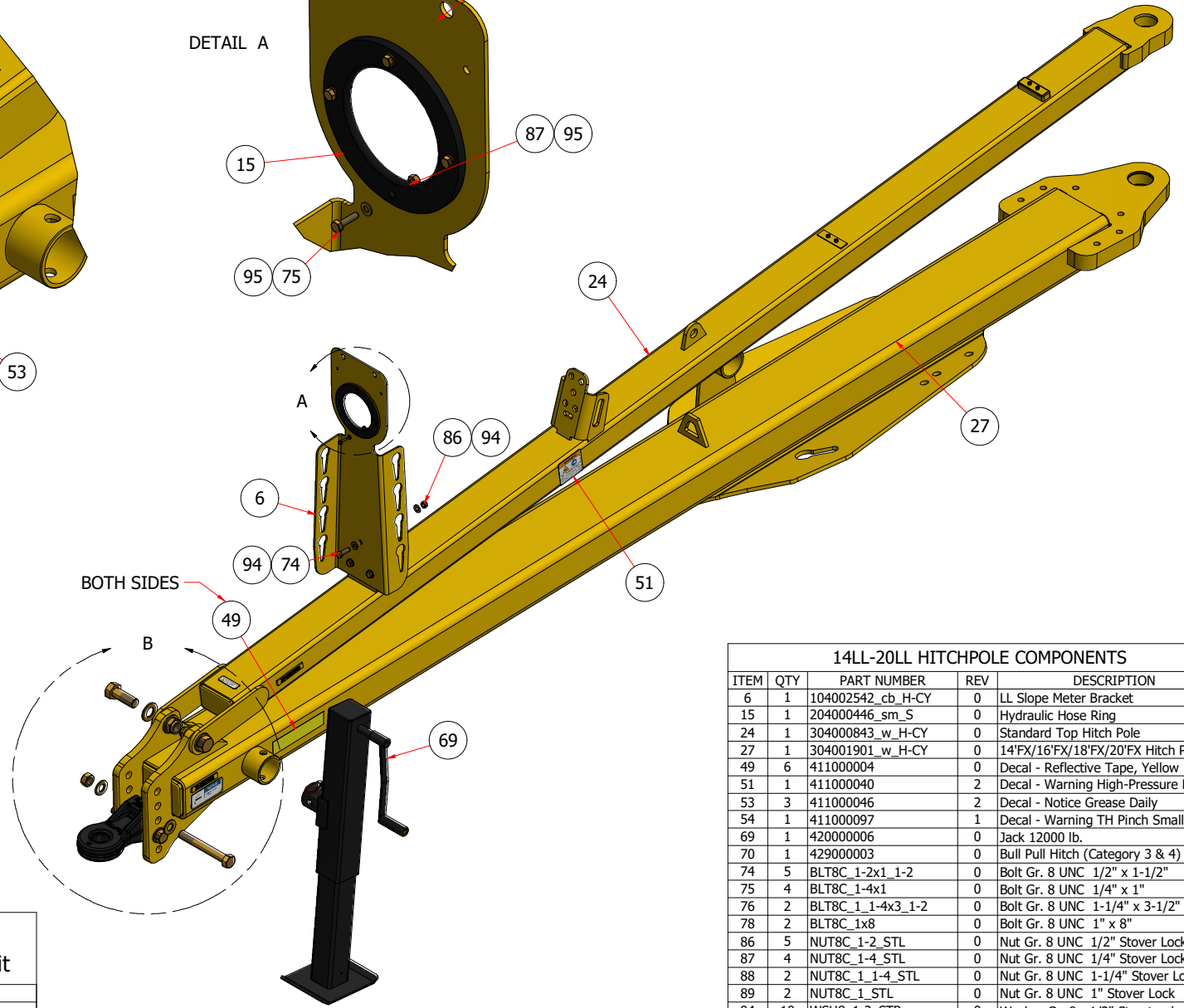
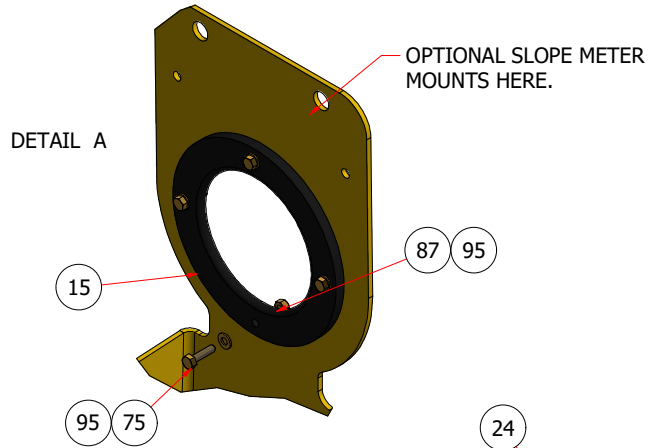
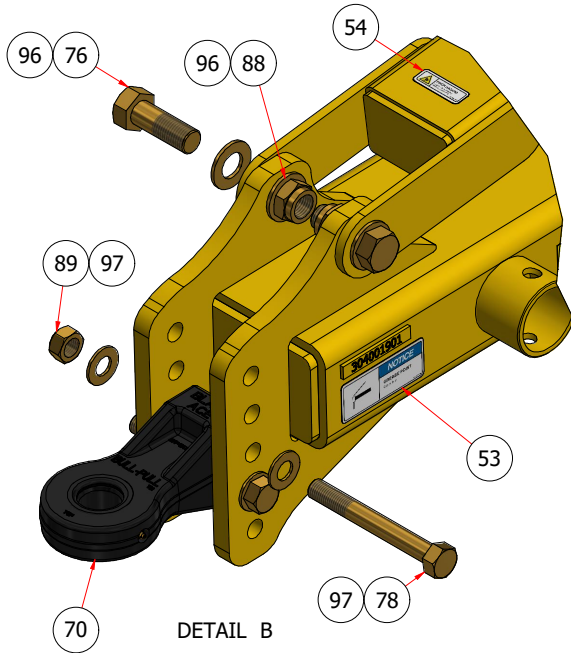
#### OPERATOR ORIENTATION

THE DIRECTIONS LEFT, RIGHT, FRONT, AND REAR, AS MENTIONED THROUGH OUT THE MANUAL,  
ARE AS SEEN FROM THE DRIVER'S SEAT AND FACING IN THE DIRECTION OF TRAVEL.

# SECTION 2.00

## STRUCTURAL

### 2201 14LL-20LL HITCHPOLE



#### 304100127 Kit Optional Slope Meter Kit

QTY	DESCRIPTION
2	Bolt Gr. 8 UNC 1/4" x 1"
2	Nut Gr. 8 UNC 1/4" Stover Lock
1	Slope Meter
2	Washer Gr. 8 - 1/4" Structural

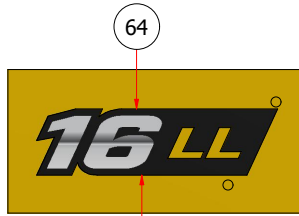
#### 14LL-20LL HITCHPOLE COMPONENTS

ITEM	QTY	PART NUMBER	REV	DESCRIPTION
6	1	104002542_cb_H-CY	0	LL Slope Meter Bracket
15	1	204000446_sm_S	0	Hydraulic Hose Ring
24	1	304000843_w_H-CY	0	Standard Top Hitch Pole
27	1	304001901_w_H-CY	0	14'FX/16'FX/18'FX/20'FX Hitch Pole
49	6	411000004	0	Bolt - Reflective Tape, Yellow
51	1	411000040	2	Decal - Warning High-Pressure Hyd
53	3	411000046	2	Decal - Notice Grease Daily
54	1	411000097	1	Decal - Warning TH Pinch Small
69	1	420000006	0	Jack 12000 lb.
70	1	429000003	0	Bull Pull Hitch (Category 3 & 4)
74	5	BLT8C_1-2x1_1-2	0	Bolt Gr. 8 UNC 1/2" x 1-1/2"
75	4	BLT8C_1-4x1	0	Bolt Gr. 8 UNC 1/4" x 1"
76	2	BLT8C_1_1-4x3_1-2	0	Bolt Gr. 8 UNC 1-1/4" x 3-1/2"
78	2	BLT8C_1x8	0	Bolt Gr. 8 UNC 1" x 8"
86	5	NUT8C_1-2_STL	0	Nut Gr. 8 UNC 1/2" Stover Lock
87	4	NUT8C_1-4_STL	0	Nut Gr. 8 UNC 1/4" Stover Lock
88	2	NUT8C_1_1-4_STL	0	Nut Gr. 8 UNC 1-1/4" Stover Lock
89	2	NUT8C_1_STL	0	Nut Gr. 8 UNC 1" Stover Lock
94	10	WSH8_1-2_STR	0	Washer Gr. 8 - 1/2" Structural
95	8	WSH8_1-4_STR	0	Washer Gr. 8 - 1/4" Structural
96	4	WSH8_1_1-4_STR	0	Washer Gr. 8 - 1-1/4" Structural
97	4	WSH8_1_STR	0	Washer Gr. 8 - 1" Structural

# SECTION 2.00

## STRUCTURAL

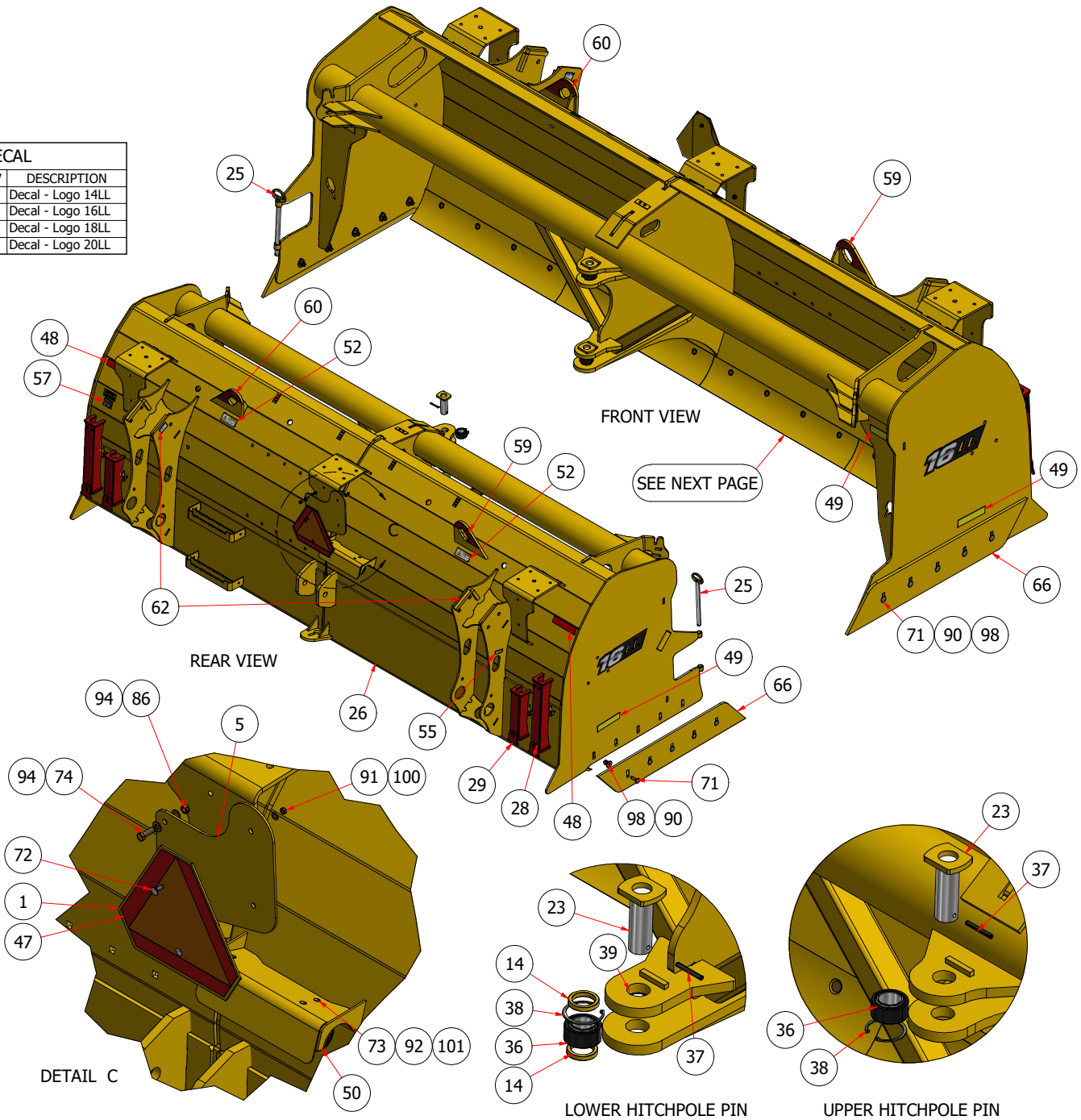
2201 14LL-20LL BOX, UNIVERSAL



SEE CHART

MODEL DECAL			
QTY	PART NUMBER	REV	DESCRIPTION
2	411000332	0	Decal - Logo 14LL
2	411000333	0	Decal - Logo 16LL
2	411000334	0	Decal - Logo 18LL
2	411000335	0	Decal - Logo 20LL

14LL-20LL BOX UNIVERSAL COMPONENTS				
ITEM	QTY	PART NUMBER	REV	DESCRIPTION
1	1	101002810_c_R-CY	1	SMV sign holder
5	1	104000832_c_S-CY	0	SMV Sign Holder Bracket
14	2	204000399_sm_H-CY	0	Hitch Pin Spacer
23	2	304000726_w_PIN-CY	0	2"D x 5-3/4"L - Head #4967
25	1	304000847_w_PIN-CY	0	Hitch Pin
26	1	304001302_w_S-CY	2	1613FX Box
28	2	304100036 Kit	1	LL Field Wheel Lift Stop Long
29	2	304100037 Kit	0	LL Field Wheel Lift Stop Short
36	2	404000112	0	2" X 3.188" Ball Bushing Bearing
37	4	405000004	0	Roll Pin 3/8" x 3"
38	2	405000090	0	Snap Ring .325" Interior
39	2	405000091	0	Machinery Bushing 18GA 2" ID x 3" OD
47	1	411000002	0	Decal - SMV Sign
48	2	411000003	0	Decal - Reflective Tape, Red
49	6	411000004	0	Decal - Reflective Tape, Yellow
50	1	411000029	0	Manual Holder
52	2	411000041	2	Decal - Caution Lift Point
55	2	411000102	1	Decal - Safety Tie Down
57	1	411000148	3	Decal - Serial Plate
59	2	411000176	0	Decal - Lift Hook Highlight
60	2	411000177	0	Decal - Lift Hook Highlight
62	2	411000195	0	Decal - Ball Valve 1 Notice
64	2	411000333	0	Decal - Logo 16LL
66	2	414000021_c-CY	0	Router Bit
67	4	414000037	0	Curved Blade 5/8" x 8" x 4'
71	10	BLT5C_3-4x2_1-2_CRG	0	Bolt Gr. 5 UNC 3/4" x 2-1/2" Carriage
72	2	BLT5C_3-8x1_CRG	0	Bolt Gr. 5 UNC 3/8" x 1" Carriage
73	3	BLT5C_5-16x3-4_CRG	0	Bolt Gr. 5 UNC 5/16" x 3/4" Carriage
74	5	BLT8C_1-2x1_1-2	0	Bolt Gr. 8 UNC 1/2" x 1-1/2"
84	16	BLT8C_5-8x2_PLW	0	Bolt Gr. 8 UNC 5/8" x 2" Plow
86	5	NUT8C_1-2_STL	0	Nut Gr. 8 UNC 1/2" Stover Lock
90	18	NUT8C_3-4_STL	0	Nut Gr. 8 UNC 3/4" Stover Lock
91	2	NUT8C_3-8_STL	0	Nut Gr. 8 UNC 3/8" Stover Lock
92	9	NUT8C_5-16_STL	0	Nut Gr. 8 UNC 5/16" Stover Lock
93	16	NUT8C_5-8_STL	0	Nut Gr. 8 UNC 5/8" Stover Lock
94	10	WSH8_1-2_STR	0	Washer Gr. 8 - 1/2" Structural
98	14	WSH8_3-4_FLT	0	Washer Gr. 8 - 3/4" Flat
100	2	WSH8_3-8_STR	0	Washer Gr. 8 - 3/8" Structural
101	11	WSH8_5-16_STR	0	Washer Gr. 8 - 5/16" Structural
102	16	WSH8_5-8_STR	0	Washer Gr. 8 - 5/8" Structural

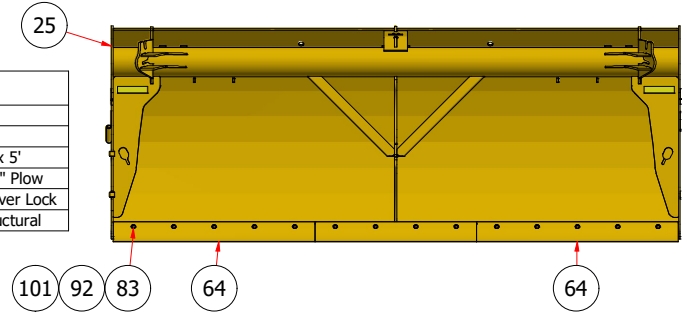


# SECTION 2.00

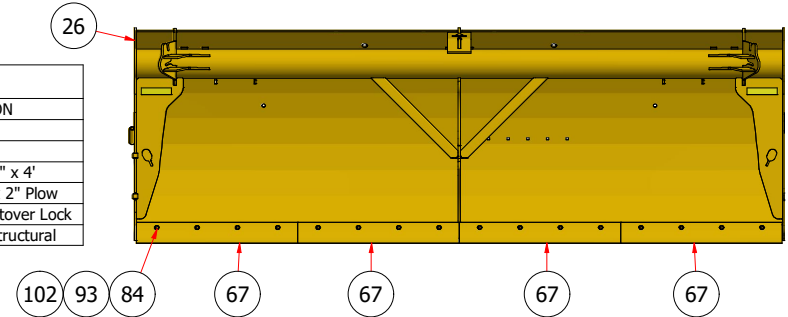
## STRUCTURAL

2201 14LL-20LL SHELL, MODEL SPECIFIC PARTS

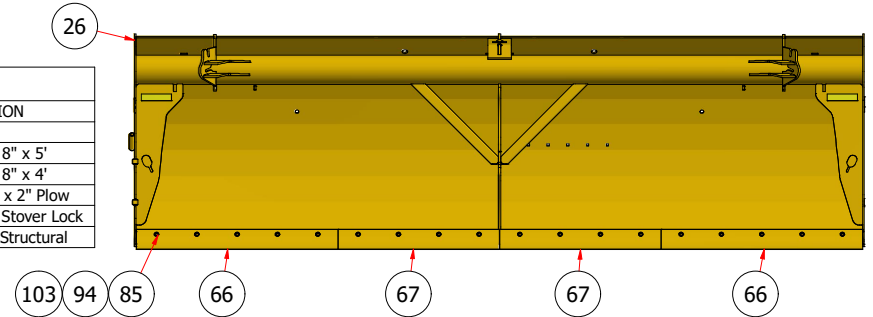
14LL CUTTING EDGE LAYOUT				
ITEM	QTY	PART NUMBER	REV	DESCRIPTION
25	1	304001303_w_S-CY	1	1411FX Box
64	2	414000024	0	Curved Blade 5/8" x 8" x 5'
83	14	BLT8C_5-8x2_PLW	0	Bolt Gr. 8 UNC 5/8" x 2" Plow
92	14	NUT8C_5-8_STL	0	Nut Gr. 8 UNC 5/8" Stover Lock
101	14	WSH8_5-8_STR	0	Washer Gr. 8 - 5/8" Structural



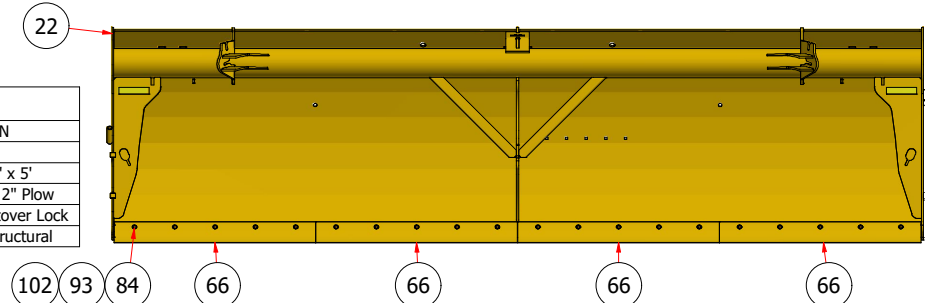
16LL CUTTING EDGE LAYOUT				
ITEM	QTY	PART NUMBER	REV	DESCRIPTION
26	1	304001302_w_S-CY	2	1613FX Box
64	2	411000333	0	Decal - Logo 16LL
67	4	414000037	0	Curved Blade 5/8" x 8" x 4'
84	16	BLT8C_5-8x2_PLW	0	Bolt Gr. 8 UNC 5/8" x 2" Plow
93	16	NUT8C_5-8_STL	0	Nut Gr. 8 UNC 5/8" Stover Lock
102	16	WSH8_5-8_STR	0	Washer Gr. 8 - 5/8" Structural



18LL CUTTING EDGE LAYOUT				
ITEM	QTY	PART NUMBER	REV	DESCRIPTION
26	1	304001301_w_S-CY	2	1814FX Box
66	2	414000024	0	Curved Blade 5/8" x 8" x 5'
67	2	414000037	0	Curved Blade 5/8" x 8" x 4'
85	18	BLT8C_5-8x2_PLW	0	Bolt Gr. 8 UNC 5/8" x 2" Plow
94	18	NUT8C_5-8_STL	0	Nut Gr. 8 UNC 5/8" Stover Lock
103	18	WSH8_5-8_STR	0	Washer Gr. 8 - 5/8" Structural



20LL CUTTING EDGE LAYOUT				
ITEM	QTY	PART NUMBER	REV	DESCRIPTION
22	1	304000723_w_S-CY	2	2016FX Box
66	4	414000024	0	Curved Blade 5/8" x 8" x 5'
84	20	BLT8C_5-8x2_PLW	0	Bolt Gr. 8 UNC 5/8" x 2" Plow
93	20	NUT8C_5-8_STL	0	Nut Gr. 8 UNC 5/8" Stover Lock
102	20	WSH8_5-8_STR	0	Washer Gr. 8 - 5/8" Structural

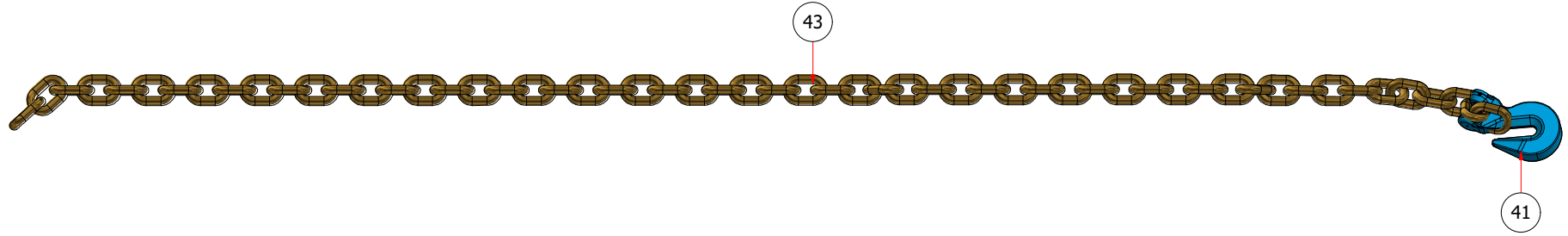


## SECTION 2.00

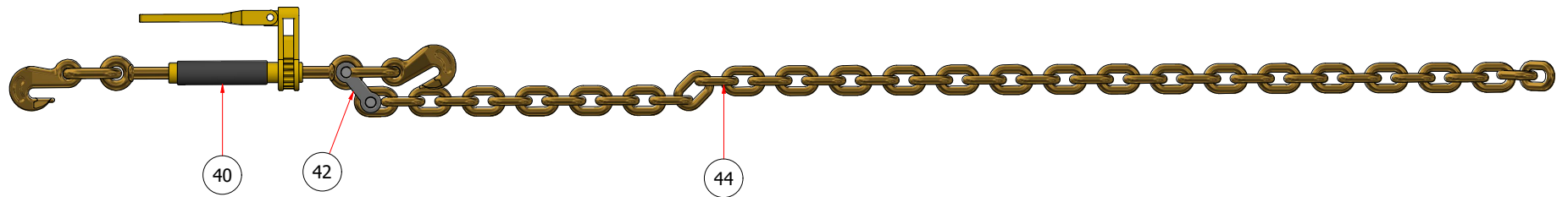
### STRUCTURAL

2201 14LL-20LL CHAINS

RIGHT SIDE CHAIN



LEFT SIDE CHAIN



14LL-20LL CHAIN COMPONENTS

ITEM	QTY	PART NUMBER	REV	DESCRIPTION
40	1	405500006	0	Quick Ratchet Binder 18100 lb
41	1	405500020	0	5/8" Grab Hook
42	1	405500021	0	Double Clevis (Mid Link)
43	1	405500024_s	0	Chain, Gr.70 5/8" x 70 Links, LL Right Side
44	1	405500025_s	0	Chain, Gr.70 5/8" x 58 Links, LL Left Side

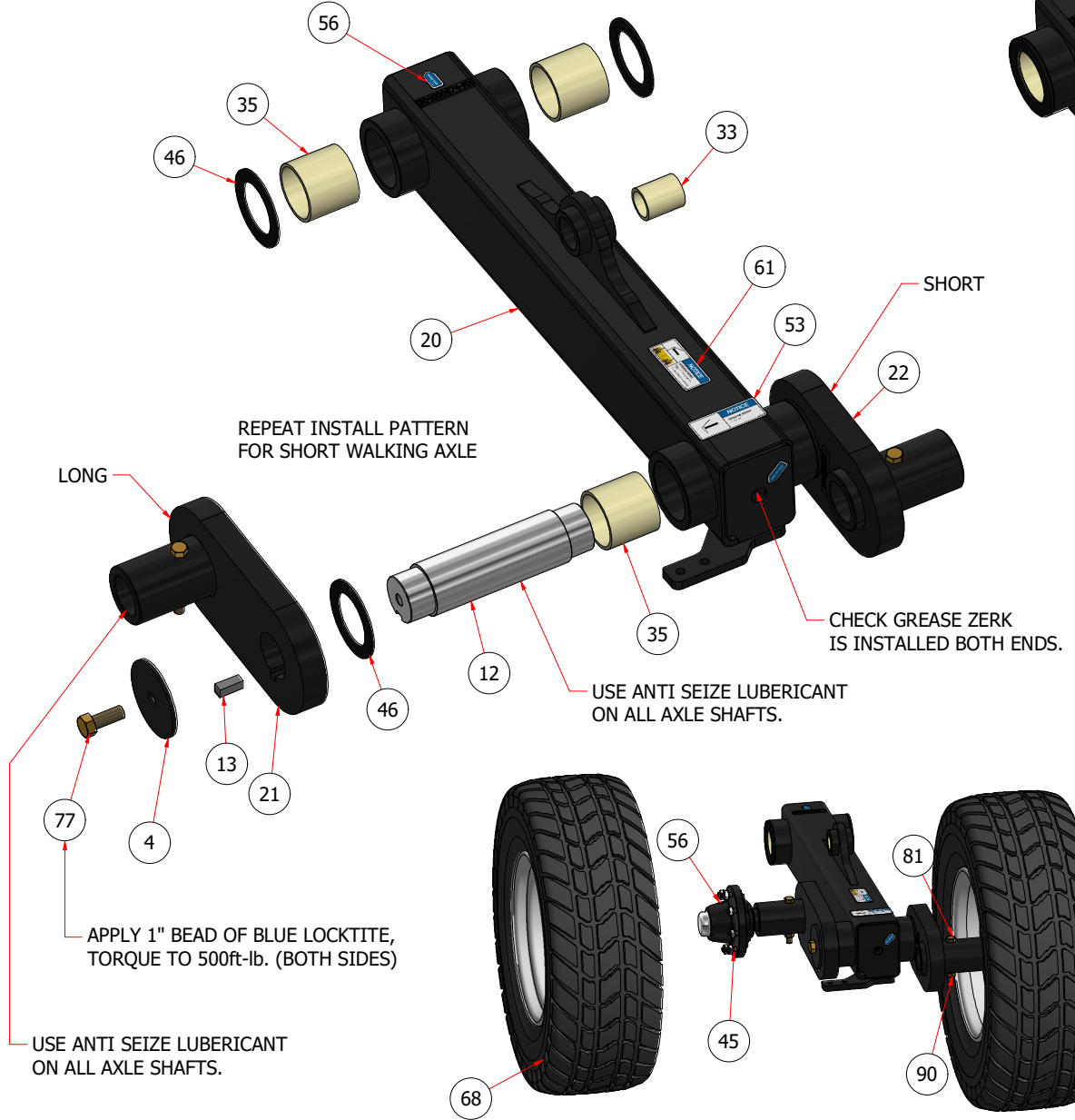
# SECTION 2.00

## STRUCTURAL

2201 14LL-20LL AXLES

AXLE ASM, LEFT

AXLE ASM, RIGHT



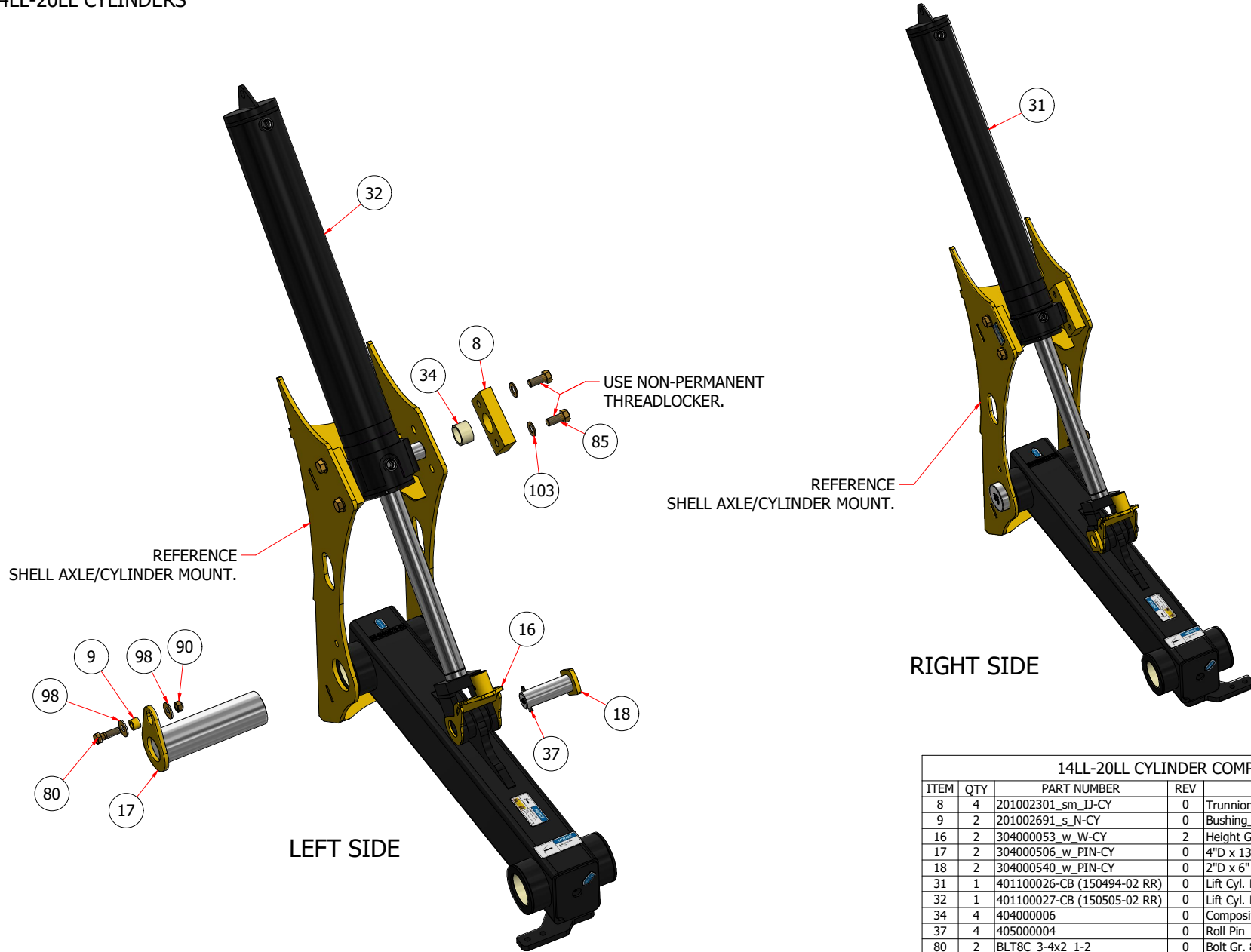
14LL-20LL AXLE COMPONENTS				
ITEM	QTY	PART NUMBER	REV	DESCRIPTION
4	4	104000135_c_W-CB	0	Walking Axle Pivot End Washer
12	2	204000185_sm_W	1	Walking Axle Pivot Shaft
13	4	204000203_s_W	0	Keyway Key
19	1	304000673_w_W-CB	1	Walking Axle Right Beam
20	1	304000674_w_W-CB	1	Walking Axle Left Beam
21	2	304000712_w_W-CB	0	10K Long Walking Axle Arm
22	2	304000713_w_W-CB	0	10K Short Walking Axle Arm
33	2	404000003	0	Composite Bushing 2.5" OD x 2" ID x 3" L
35	8	404000009	0	Composite Bushing 4.5" OD x 4" ID x 4" L
45	4	406000034-CB	0	10K Hub and Spindle Kit
46	8	409000110	0	Thrust Washer 6" OD x 4.125" ID x 0.25"
53	3	411000046	2	Decal - Notice Grease Daily
56	8	411000124	1	Decal - Notice Grease Point Marker
61	2	411000187	0	Decal - Notice Grease 250hr, 10pumps LL
68	4	419000025	0	385/65R22.5 Trakmila 18 Ply(8bblt)
77	4	BLT8C_1x2_1-2	0	Bolt Gr. 8 UNC 1" x 2-1/2"
81	4	BLT8C_3-4x6	0	Bolt Gr. 8 UNC 3/4" x 6"
90	18	NUT8C_3-4_STL	0	Nut Gr. 8 UNC 3/4" Stover Lock



# SECTION 2.00

## STRUCTURAL

2201 14LL-20LL CYLINDERS



RIGHT SIDE

LEFT SIDE

14LL-20LL CYLINDER COMPONENTS				
ITEM	QTY	PART NUMBER	REV	DESCRIPTION
8	4	201002301_sm_IJ-CY	0	Trunnion Block
9	2	201002691_s_N-CY	0	Bushing_pin retainer
16	2	304000053_w_W-CY	2	Height Gauge, Base LL
17	2	304000506_w_PIN-CY	0	4"D x 13-3/8"L Head #0123
18	2	304000540_w_PIN-CY	0	2"D x 6" L Head Pin #4967
31	1	401100026-CB (150494-02 RR)	0	Lift Cyl. Land Levelers (150494-02 RR)
32	1	401100027-CB (150505-02 RR)	0	Lift Cyl. LL Flex Series (150505-02 RR)
34	4	404000006	0	Composite Bushing 2.5" OD x 2" ID x 1.5"
37	4	405000004	0	Roll Pin 3/8" x 3"
80	2	BLT8C_3-4x2_1-2	0	Bolt Gr. 8 UNC 3/4" x 2-1/2"
85	8	BLT8C_7-8x2	0	Bolt Gr. 8 UNC 7/8" x 2"
90	18	NUT8C_3-4_STL	0	Nut Gr. 8 UNC 3/4" Stover Lock
98	14	WSH8_3-4_FLT	0	Washer Gr. 8 - 3/4" Flat
103	8	WSH8_7-8_STR	0	Washer Gr. 8 - 7/8" Structural

# SECTION 2.00

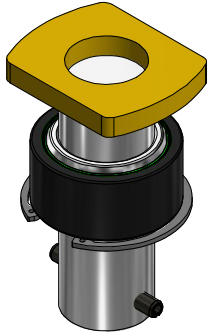
## STRUCTURAL

2201 14LL-20LL HEIGHT GAUGE



14LL-20LL HEIGHT GAUGE COMPONENTS				
ITEM	QTY	PART NUMBER	REV	DESCRIPTION
2	1	104000054_cf-CB	2	Top CYL Guage Bracket (Left)
3	1	104000055_cf-CB	2	Top CYL Guage Bracket (Right)
10	2	204000103_sm	1	Leveler Gage Slide Block
11	2	204000148_sm_W	0	LL Visual Gage pipe
58	8	411000149	0	Decal - Reflective Tape, Red
79	2	BLT8C_3-4x1_3-4	0	Bolt Gr. 8 UNC 3/4" x 1-3/4"
82	4	BLT8C_5-16x1_1-2	0	Bolt Gr. 8 UNC 5/16" x 1-1/2"
83	2	BLT8C_5-16x2_1-2	0	Bolt Gr. 8 UNC 5/16" x 2-1/2"
90	18	NUT8C_3-4_STL	0	Nut Gr. 8 UNC 3/4" Stover Lock
92	9	NUT8C_5-16_STL	0	Nut Gr. 8 UNC 5/16" Stover Lock
99	4	WSH8_3-4_STR	0	Washer Gr. 8 - 3/4" Structural
101	11	WSH8_5-16_STR	0	Washer Gr. 8 - 5/16" Structural

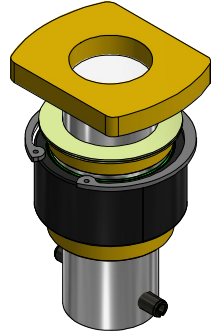
# SECTION 2.00 KITS



UPPER HITCHPOLE PIN

304100121 Kit (0726 PIN)

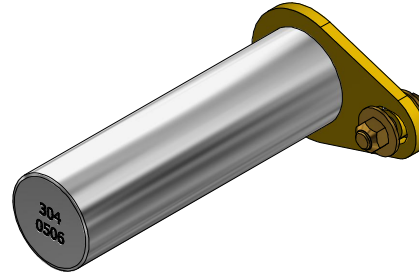
QTY	DESCRIPTION
1	2" X 3.188" Ball Bushing Bearing
1	2"D x 5-3/4"L - Head #4967
1	Roll Pin 3/8" x 3"
1	Snap Ring_3.25" Interior



LOWER HITCHPOLE PIN

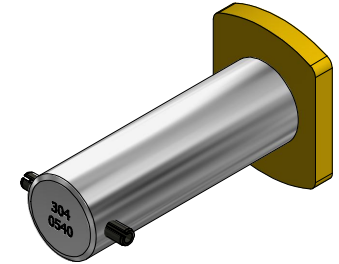
304100122 Kit (0726 PIN)

QTY	DESCRIPTION
1	2" X 3.188" Ball Bushing Bearing
1	2"D x 5-3/4"L - Head #4967
2	Hitch Pin Spacer
2	Machinery Bushing 18GA 2" ID x 3" OD
1	Roll Pin 3/8" x 3"
1	Snap Ring_3.25" Interior



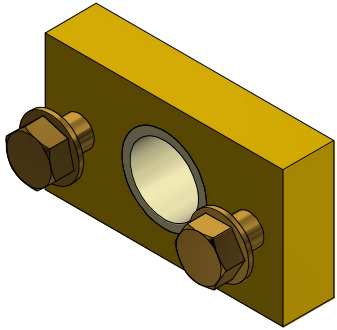
304100104 Kit (0506 PIN)

QTY	DESCRIPTION
1	4"D x 13-3/8"L Head #0123
1	Bolt Gr. 8 UNC 3/4" x 2-1/2"
1	Bushing_pin retainer
1	Nut Gr. 8 UNC 3/4" Stover Lock
2	Washer Gr. 8 - 3/4" Flat



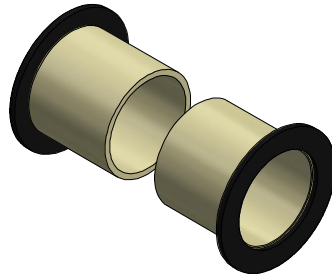
304100106 Kit (0504 PIN)

QTY	DESCRIPTION
1	2"D x 6" L Head Pin #4967
1	Roll Pin 3/8" x 3"



304100008 Kit

QTY	DESCRIPTION
2	Bolt Gr. 8 UNC 7/8" x 2-1/2"
1	Composite Bushing 2.5" OD x 2" ID x 1.5"
1	Trunnion Block
2	Washer Gr. 8 - 7/8" Structural



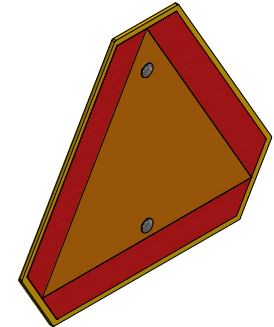
304100028 Kit

QTY	DESCRIPTION
2	Thrust Washer 6" OD x 4.125" ID x 0.25"
2	Composite Bushing 4.5" OD x 4" ID x 4" L



304100043 Kit

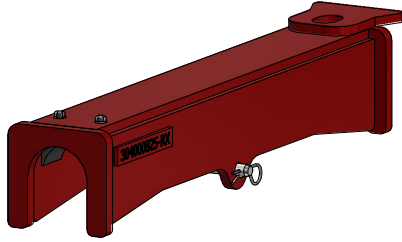
QTY	DESCRIPTION
1	10K Hub and Spindle Kit
1	Decal - Notice Grease Point Marker



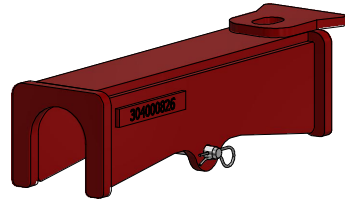
304100111 Kit

QTY	DESCRIPTION
2	Bolt Gr. 5 UNC 3/8" x 1-1/2" Carriage
1	Decal - SMV Sign
2	Nut Gr. 8 UNC 3/8" Stover Lock
1	SMV sign holder
2	Washer Gr. 8 - 3/8" Structural

# SECTION 2.00 KITS



304100036-R1 Kit	
QTY	DESCRIPTION
1	1/2" x 4" Zinc Bent Pin
2	1/4" x 1" self tapping hex head bolt
1	Cyld Stop Plastic Block
1	LL Field Wheel Lift Stop Long



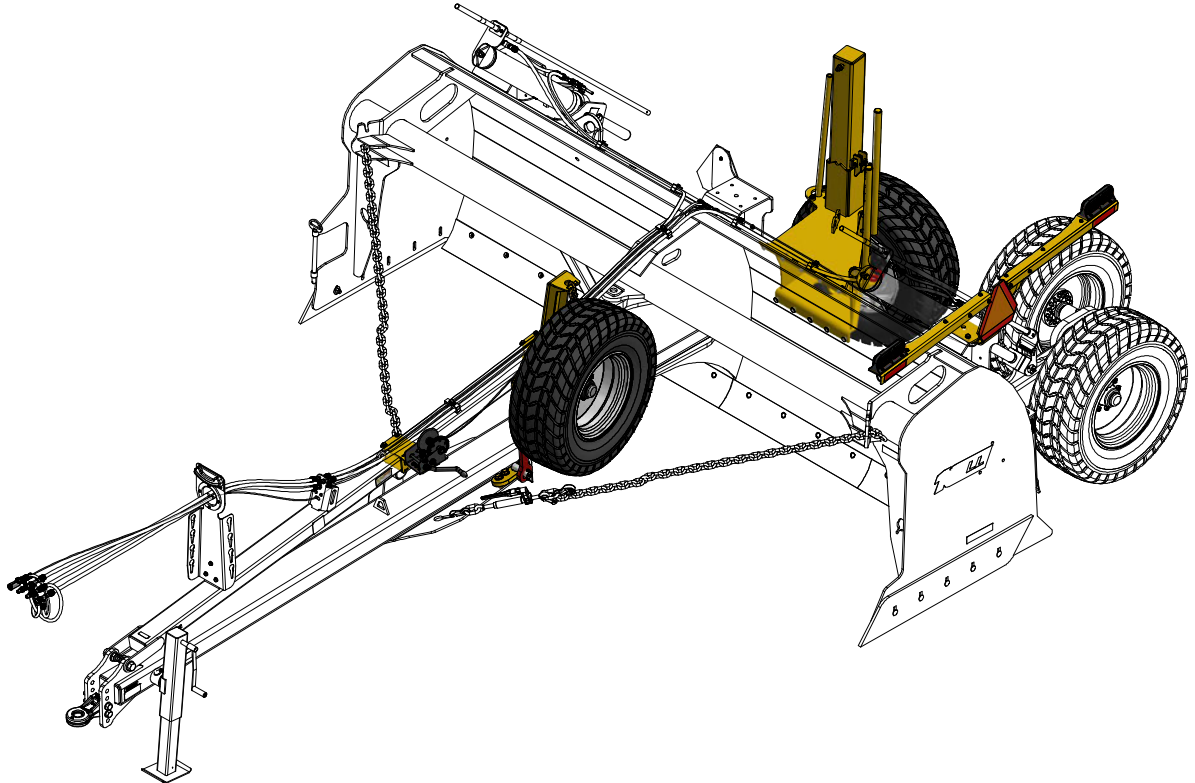
304100037 Kit	
QTY	DESCRIPTION
1	1/2" x 4" Zinc Bent Pin
1	LL Field Wheel Lift Stop Short

# SECTION 2.01

## STRUCTURAL

### 2201 16LL-20LL OPTIONAL TRANSPORT WHEEL KIT (304100126-R1 Kit)

1613-2016FX OPTIONAL TRANSPORT					1613-2016FX OPTIONAL TRANSPORT					1613-2016FX OPTIONAL TRANSPORT				
ITEM	QTY	PART NUMBER	REV	DESCRIPTION	ITEM	QTY	PART NUMBER	REV	DESCRIPTION	ITEM	QTY	PART NUMBER	REV	DESCRIPTION
1	1	104000837_c_W-CY	0	Transport Arm Pivot End Washer	60	2	BLT8C_3-4x5_1-2	0	Bolt Gr. 8 UNC 3/4" x 5-1/2"	73	3	NUT8C_1_STL	0	Nut Gr. 8 UNC 1" Stover Lock
2	1	104000852_c_W-CY	0	Handle Lock	61	6	BLT8C_3-4x6	0	Bolt Gr. 8 UNC 3/4" x 6"	74	9	NUT8C_3-4_STL	0	Nut Gr. 8 UNC 3/4" Stover Lock
3	4	104000884_c_H-CY	0	LL Front Transport Mount Shim	62	1	BLT8C_3-4x9	0	Bolt Gr. 8 UNC 3/4" x 9"	75	16	NUT8C_3-8_STL	0	Nut Gr. 8 UNC 3/8" Stover Lock
4	1	104001167_c_W-CY	0	Slider Holder	63	8	BLT8C_3-8x1	0	Bolt Gr. 8 UNC 3/8" x 1"	76	2	NUT8C_5-8	0	Nut Gr. 8 UNC 5/8"
5	1	104002129_cbt-CY	0	Tail Light Brace	64	1	BLT8C_3-8x1_1-2	0	Bolt Gr. 8 UNC 3/8" x 1-1/2"	77	21	NUT8C_5-8_STL	0	Nut Gr. 8 UNC 5/8" Stover Lock
6	1	104002555_c_W-CY	0	Transport Wheel Hook	65	7	BLT8C_3-8x1_1-4	0	Bolt Gr. 8 UNC 3/8" x 1-1/4"	78	1	WSH8_1-2_FLT	0	Washer Gr. 8 - 1/2" Flat
7	1	104002579_c_H-CY	0	Transport Mount End	66	4	BLT8C_5-8x2	0	Bolt Gr. 8 UNC 5/8" x 2"	79	17	WSH8_1-2_STR	0	Washer Gr. 8 - 1/2" Structural
8	1	104002580_c_H-CY	0	Shim	67	2	BLT8C_5-8x2_1-4	0	Bolt Gr. 8 UNC 5/8" x 2-1/4"	80	16	WSH8_1-4_STR	0	Washer Gr. 8 - 1/4" Structural
9	1	104002603_c_W-SR	2	Transport Wheel Arm	68	1	BLT8C_5-8x2_1-4_AT	0	Bolt Gr. 8 UNC 5/8" x 2-1/4" All Thread	81	6	WSH8_1_STR	0	Washer Gr. 8 - 1" Structural
10	1	104003522_cb-CY	0	SMV Tail light mount Bracket	69	1	BLT8C_5-8x3_AT	0	Bolt Gr. 8 UNC 5/8" x 3" All Thread	82	14	WSH8_3-4_STR	0	Washer Gr. 8 - 3/4" Structural
11	1	104003524_cb-CY	0	Tail Light Arm Right	70	4	BLT8C_5-8x6	0	Bolt Gr. 8 UNC 5/8" x 6"	83	6	WSH8_3-8_FLT	0	Washer Gr. 8 - 3/8" Flat
12	1	104003525_cb-CY	0	Tail Light Arm Left	71	11	NUT8C_1-2_STL	0	Nut Gr. 8 UNC 1/2" Stover Lock	84	20	WSH8_3-8_STR	0	Washer Gr. 8 - 3/8" Structural
13	2	2011 Cable Clamp 0250	0	Wire Cable Clamp 1/4"	72	8	NUT8C_1-4_STL	0	Nut Gr. 8 UNC 1/4" Stover Lock	85	32	WSH8_5-8_STR	0	Washer Gr. 8 - 5/8" Structural
14	1	2011 Cable Thimble 0250	0	Cable Thimble 1/4"										
15	1	2011 Cable_0250_2400	0	Steel Cable Galvanized 1/4" x 240"										
16	1	204000266_sd_W	0	Vertical Lift Sliding Pad										
17	2	204000419_sm_W-CY	0	Rear Transport Leg Sleeve										
18	1	204000453_sm_W	0	Leg Slide Bracket Shaft										
19	1	304000735_w_W-CY	1	Transport Wheel Lift Handle										
20	2	304000802_w_S-CY	0	LL Shell Safe Walk Handle										
21	1	304000830_w_H-CY	0	Std LL H-Transport Mount										
22	1	304000846_w_PIN-SR	0	Router Bit Tie Rod Pin										
23	1	304000849_w_W-CY	1	Standard LL Transport Leg										
24	1	304000860_w_H-CY	0	Transport Wheel Lift Arm										
25	1	304000861_w_H-CY	0	Transport Wheel Lift Arm										
26	1	304000862_w_PIN-CY	0	Transport Link Pin										
27	1	304001200_w_W-CY	0	Standard LL Rear Transport Boot										
28	1	304001201_w_W-CY	0	Standard LL Transport Leg										
29	1	304001902_w_H-CY	0	Transport Leg Pin										
30	2	404000009	0	Composite Bushing 4.5" OD x 4" ID x 4" L										
31	2	404000025	0	6303 2RS (SKF) Bearing number										
32	1	405000016	0	Zerk, 1/8" NPT										
33	2	405000026	0	Pin Lynch, 3/8" (1.25" Useable)										
34	2	405000031	0	Pin Snapper SQR, 3/8" (2.5" Useable)										
35	1	405000125	0	Eye Bolt, 5/8" x 2-3/4" HD										
36	1	405500010	0	Hand Winch										
37	1	405500011	0	4" Pulley Block										
38	2	406000034-CB	1	10K Hub and Spindle Kit										
39	11	407600164	0	P-Clip 5/8"										
40	2	409000110	0	Thrust Washer 6" OD x 4.125" ID x 0.25"										
41	1	411000002	0	Decal - SMV Sign										
42	2	411000003	0	Decal - Reflective Tape, Red										
43	2	411000124	1	Decal - Notice Grease Point Marker										
44	1	411000260	1	Decal - Chain Leveler Transport Mode										
45	2	411000261	0	Decal - Warning, Crush Hazard										
46	1	412000008	0	Plug 7-Wire										
47	1	412000210	0	LED Light Kit - Amber/Red LH										
48	1	412000211	0	LED Light Kit - Amber/Red RH										
49	1	412630080	0	Harness, LL Tail Lights (1613FX)										
50	2	419000025	0	385/65R22.5 Trakmila 18 Ply(8btl)										
51	5	BLT5C_1-2x1_3-4_CRG	0	Bolt Gr. 5 UNC 1/2" x 1-3/4" Carriage										
52	2	BLT5C_3-8x1_1-4_BHC	0	Bolt Gr. 5 UNC 3/8" x 1-1/4" Button Head										
53	10	BLT5C_5-8x2_CRG	0	Bolt Gr. 5 UNC 5/8" x 2" Carriage										
54	1	BLT8C_1-2x1_1-2	0	Bolt Gr. 8 UNC 1/2" x 1-1/2"										
55	1	BLT8C_1-2x2	0	Bolt Gr. 8 UNC 1/2" x 2"										
56	4	BLT8C_1-2x6	0	Bolt Gr. 8 UNC 1/2" x 6"										
57	8	BLT8C_1-4x1_1-4	0	Bolt Gr. 8 UNC 1/4" x 1-1/4"										
58	1	BLT8C_1x2_1-2	0	Bolt Gr. 8 UNC 1" x 2-1/2"										
59	3	BLT8C_1x3	0	Bolt Gr. 8 UNC 1" x 3"										

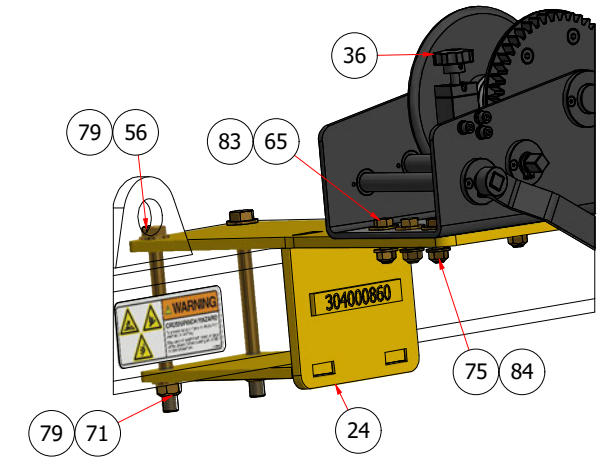
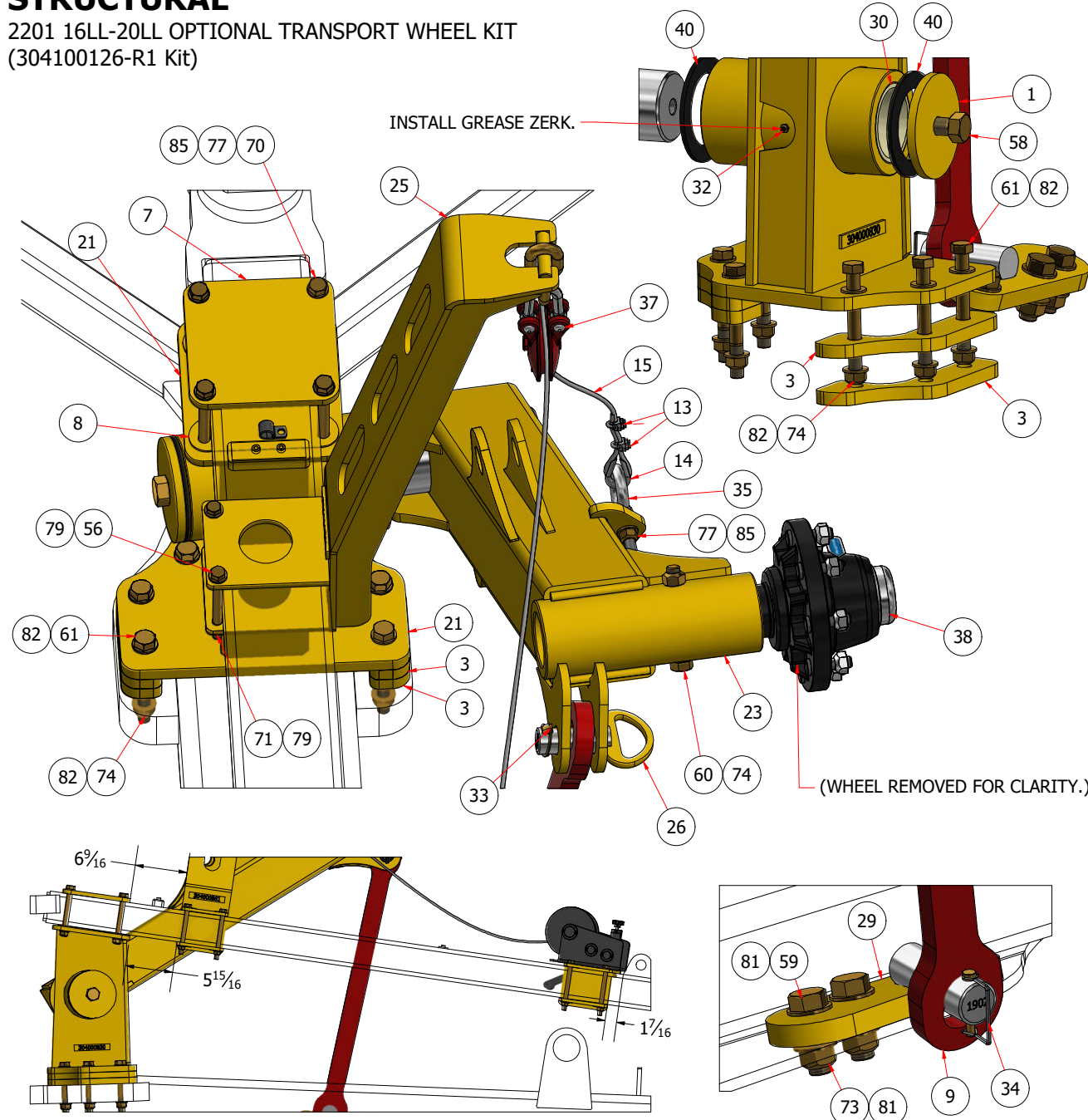


**NOTE:**  
THE LIST CONTAINS ALL OPTIONAL TRANSPORT WHEEL KIT COMPONENTS.  
THIS SECTION DOES NOT COVER THE ELECTRICAL COMPONENTS / INSTALL. (SEE SECTION 5.00)

# SECTION 2.01

## STRUCTURAL

2201 16LL-20LL OPTIONAL TRANSPORT WHEEL KIT  
(304100126-R1 Kit)

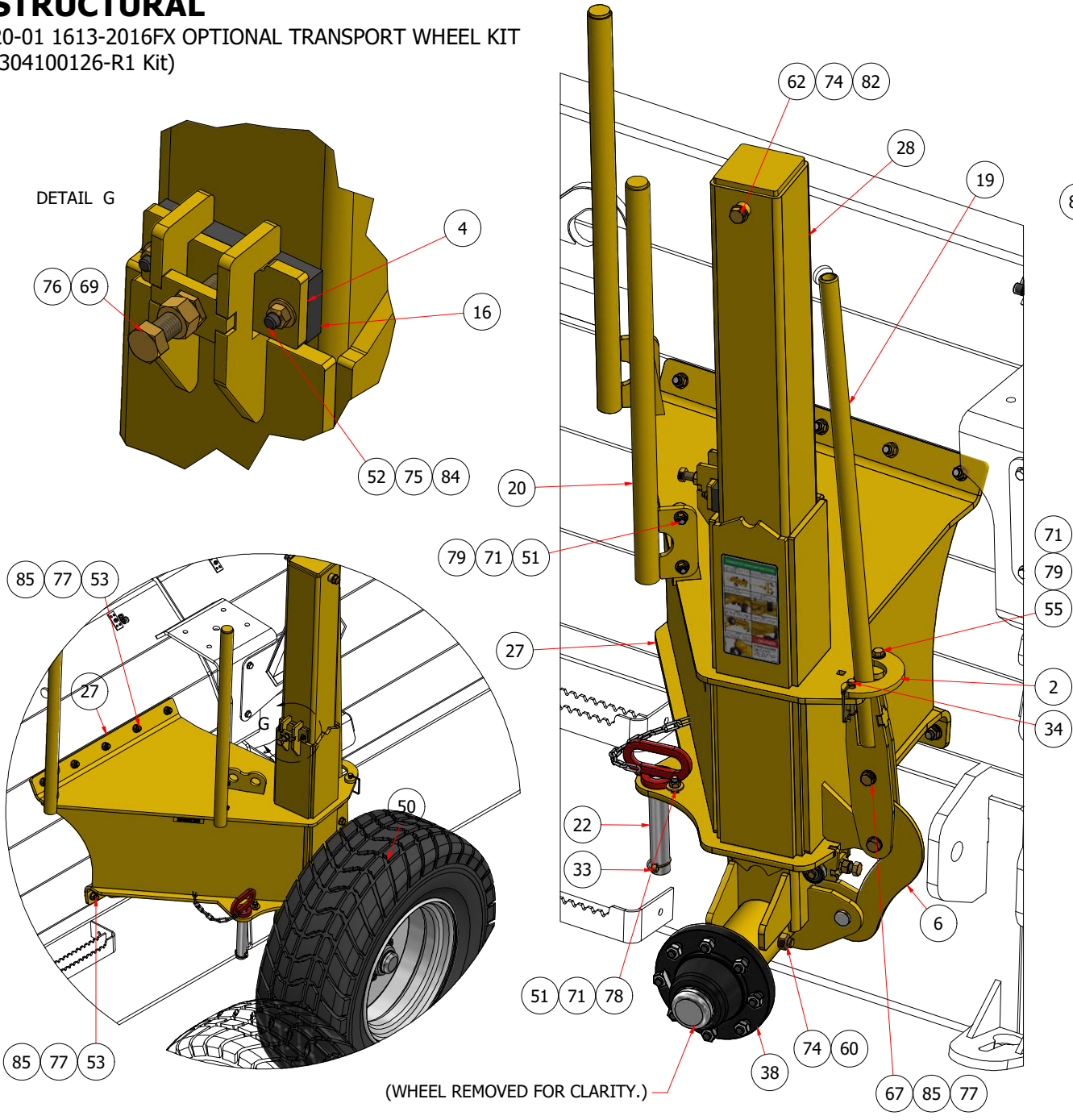


16LL-20LL OPTIONAL TRANSPORT				
ITEM	QTY	PART NUMBER	REV	DESCRIPTION
1	1	104000837_c_W-CY	0	Transport Arm Pivot End Washer
3	4	104000884_c_H-CY	0	LL Front Transport Mount Shim
7	1	104002579_c_H-CY	0	Transport Mount End
8	1	104002580_c_H-CY	0	Shim
9	1	104002603_c_W-SR	2	Transport Wheel Arm
13	2	2011 Cable Clamp 0250	0	Wire Cable Clamp 1/4"
14	1	2011 Cable Thimble 0250	0	Cable Thimble 1/4"
15	1	2011 Cable_0250_2400	0	Steel Cable Galvanized 1/4" x 240"
21	1	304000830_w_H-CY	0	Std LL H-Transport Mount
23	1	304000849_w_W-CY	1	Standard LL Transport Leg
24	1	304000860_w_H-CY	0	Transport Wheel Lift Arm
25	1	304000861_w_H-CY	0	Transport Wheel Lift Arm
26	1	304000862_w_PIN-CY	0	Transport Link Pin
29	1	304001902_w_H-CY	0	Transport Leg Pin
30	2	404000009	0	Composite Bushing 4.5" OD x 4" ID x 4" L
32	1	405000016	0	Zerk, 1/8" NPT
33	2	405000026	0	Pin Lynch, 3/8" (1.25" Useable)
34	2	405000031	0	Pin Snapper SQR, 3/8" (2.5" Useable)
35	1	405000125	0	Eye Bolt, 5/8" x 2-3/4" HD
36	1	405500010	0	Hand Winch
37	1	405500011	0	4" Pulley Block
38	2	406000034-CB	1	10K Hub and Spindle Kit
40	2	409000110	0	Thrust Washer 6" OD x 4.125" ID x 0.25"
56	4	BLT8C_1-2x6	0	Bolt Gr. 8 UNC 1/2" x 6"
58	1	BLT8C_1x2_1-2	0	Bolt Gr. 8 UNC 1" x 2-1/2"
59	3	BLT8C_1x3	0	Bolt Gr. 8 UNC 1" x 3"
60	2	BLT8C_3-4x5_1-2	0	Bolt Gr. 8 UNC 3/4" x 5-1/2"
61	6	BLT8C_3-4x6	0	Bolt Gr. 8 UNC 3/4" x 6"
65	7	BLT8C_3-8x1_1-4	0	Bolt Gr. 8 UNC 3/8" x 1-1/4"
70	4	BLT8C_5-8x6	0	Bolt Gr. 8 UNC 5/8" x 6"
71	11	NUT8C_1-2_STL	0	Nut Gr. 8 UNC 1/2" Stover Lock
73	3	NUT8C_1_STL	0	Nut Gr. 8 UNC 1" Stover Lock
74	9	NUT8C_3-4_STL	0	Nut Gr. 8 UNC 3/4" Stover Lock
75	16	NUT8C_3-8_STL	0	Nut Gr. 8 UNC 3/8" Stover Lock
77	21	NUT8C_5-8_STL	0	Nut Gr. 8 UNC 5/8" Stover Lock
79	17	WSH8_1-2_STR	0	Washer Gr. 8 - 1/2" Structural
81	6	WSH8_1_STR	0	Washer Gr. 8 - 1" Structural
82	14	WSH8_3-4_STR	0	Washer Gr. 8 - 3/4" Structural
83	6	WSH8_3-8_FLT	0	Washer Gr. 8 - 3/8" Flat
84	20	WSH8_3-8_STR	0	Washer Gr. 8 - 3/8" Structural
85	32	WSH8_5-8_STR	0	Washer Gr. 8 - 5/8" Structural

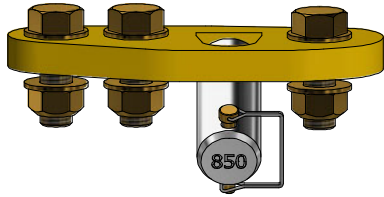
# SECTION 2.01

## STRUCTURAL

20-01 1613-2016FX OPTIONAL TRANSPORT WHEEL KIT  
(304100126-R1 Kit)

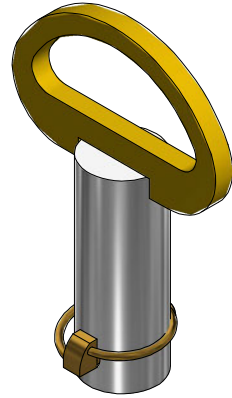


# SECTION 1.00 KITS



304100123 Kit (0850 PIN)

QTY	DESCRIPTION
3	Bolt Gr. 8 UNC 1" x 3"
3	Nut Gr. 8 UNC 1" Stover Lock
1	Pin Snapper SQR, 3/8" (2.5" Useable)
1	Transport Leg Pin
6	Washer Gr. 8 - 1" Structural



304100125 Kit (0862 PIN)

QTY	DESCRIPTION
1	Pin Lynch, 3/8" (1.25" Useable)
1	Transport Link Pin



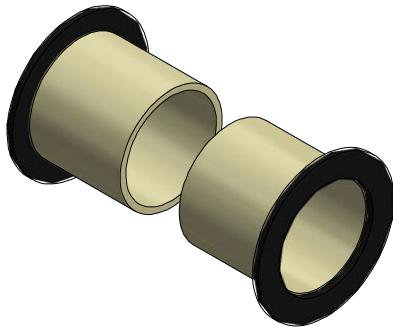
304100124 Kit (0846 PIN)

QTY	DESCRIPTION
1	Router Bit Tie Rod Pin
1	Pin Lynch, 3/8" (1.25" Useable)



304100043 Kit

QTY	DESCRIPTION
1	10K Hub and Spindle Kit
1	Decal - Notice Grease Point Marker



304100028 Kit

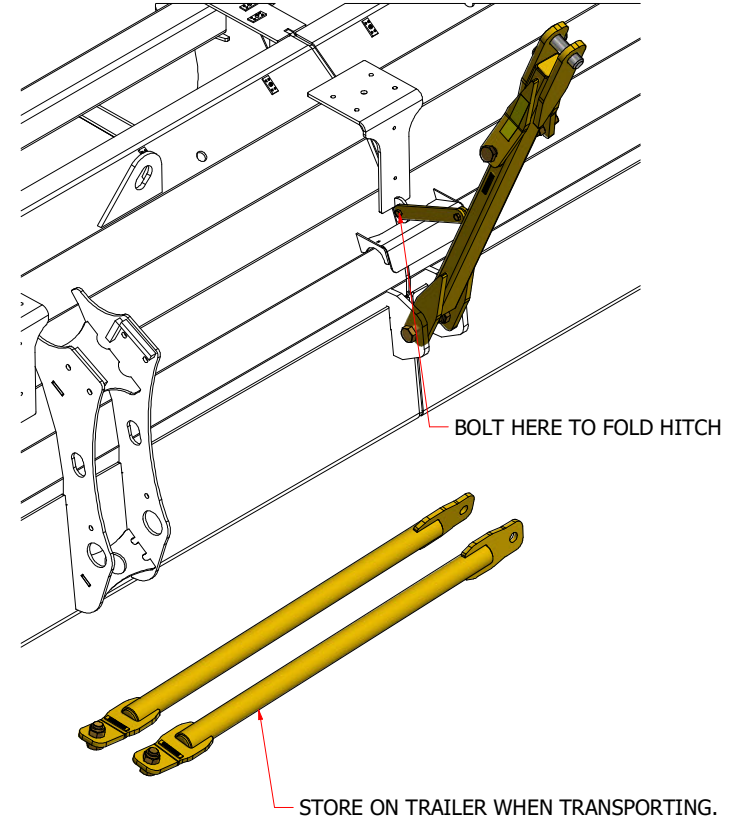
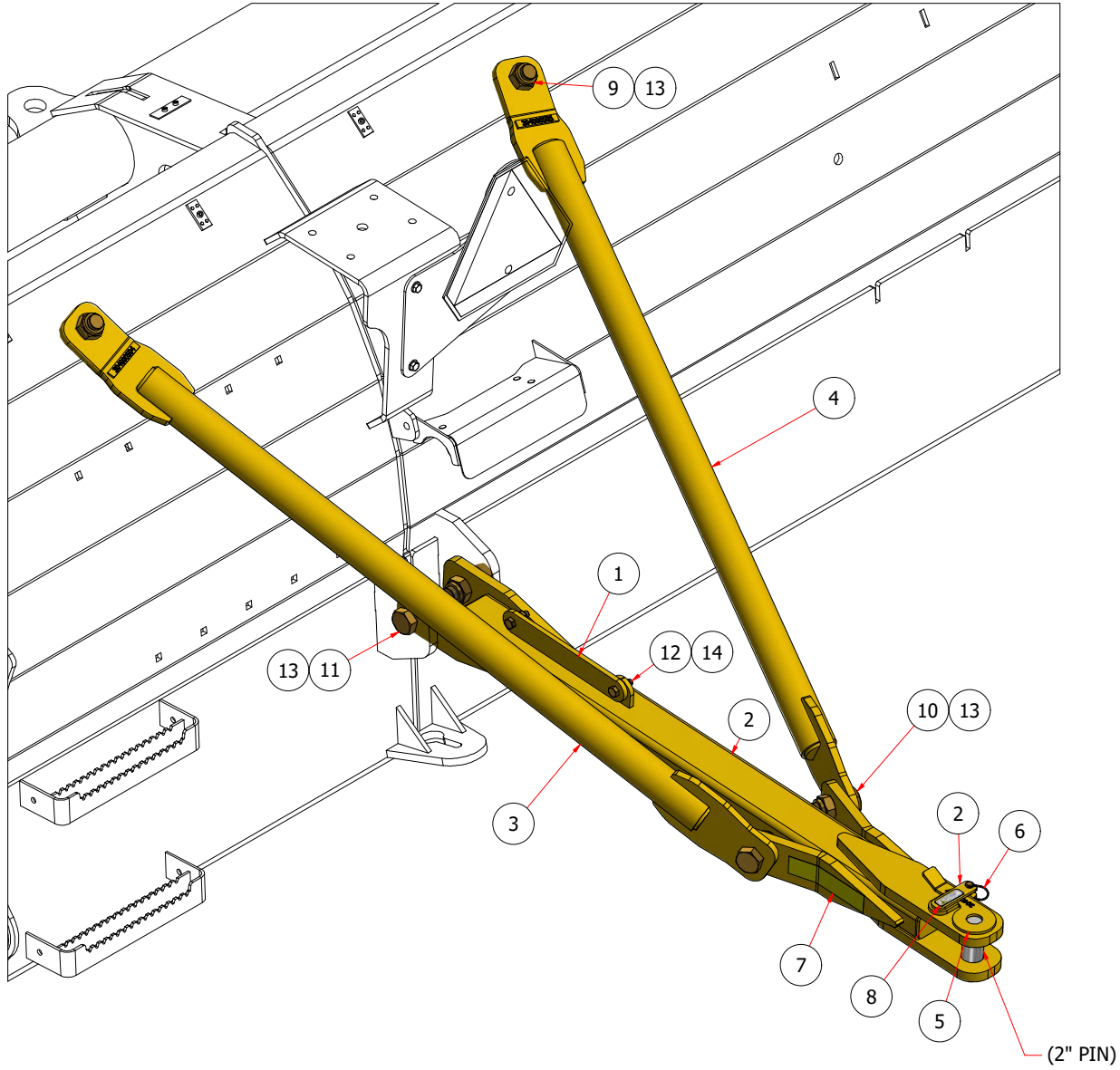
QTY	DESCRIPTION
2	Thrust Washer 6" OD x 4.125" ID x 0.25"
2	Composite Bushing 4.5" OD x 4" ID x 4" L



# SECTION 2.02

## STRUCTURAL

2201 14LL-20LL OPTIONAL REAR TOW HITCH  
 CONTACT SALES FOR MORE INFORMATION  
 (304100001 Kit)



304100001 Kit				
ITEM	QTY	PART NUMBER	REV	DESCRIPTION
1	1	104000357_c_D-CY	0	Rear Hitch Transport Linkage
2	1	304000077_w_D-CY	1	Rear Land Leveler Hitch
3	1	304000504_w_D-CY	0	Back Hitch Pole Left Angle Brace
4	1	304000505_w_D-CY	0	Back Hitch Pole Right Angle Brace
5	1	304000507_w_PIN-CY	0	Land Leveler Back H-Pin
6	1	405000055	0	3/8 X 1 5/8 Snapper Pin, Round
7	2	411000004	0	Decal - Reflective Tape, Yellow
8	1	411000097	1	Decal - Warning TH Pinch Small
9	2	BLT8C_1_1-2x3	0	Bolt Gr. 8 UNC 1-1/2" x 3"
10	2	BLT8C_1_1-2x3_1-2	0	Bolt Gr. 8 UNC 1-1/2" x 3-1/2"
11	2	BLT8C_1_1-2x4	0	Bolt Gr. 8 UNC 1-1/2" x 4"
12	2	BLT8C_5-8x2	0	Bolt Gr. 8 UNC 5/8" x 2"
13	6	NUT8C_1_1-2_STL	0	Nut Gr. 8 UNC 1-1/2" Stover Lock
14	2	NUT8C_5-8_STL	0	Nut Gr. 8 UNC 5/8" Stover Lock

# SECTION 3.00

## HYDRAULICS

### 2201 14LL-20LL HYDRAULICS

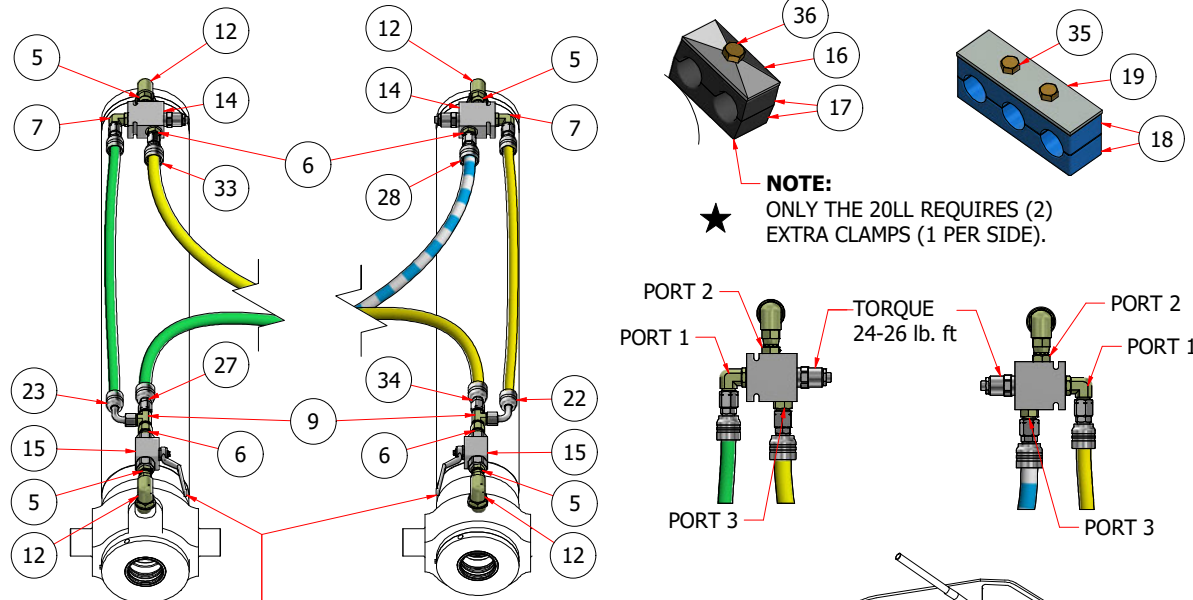
(SEE TABLE FOR MODEL SPECIFIC LENGTHS)

14LL-20LL HYDRAULIC COMPONENTS

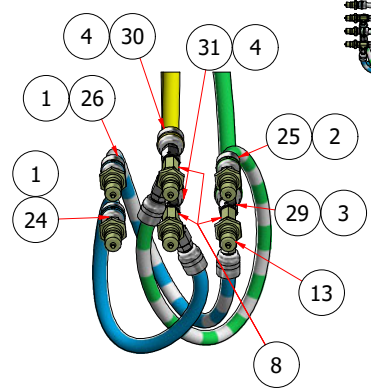
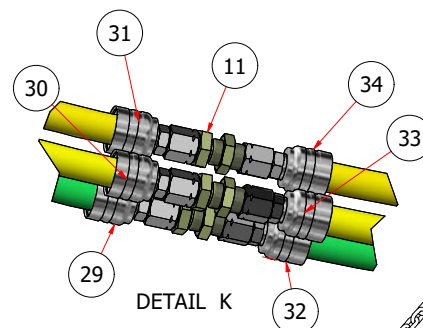
ITEM	QTY	PART NUMBER	REV	DESCRIPTION
1	3	405000051	0	Light Blue Zip Tie
2	1	405000052	0	Green Zip Tie
3	2	405000052	0	Green Zip Tie
4	3	405000053	0	Yellow Zip Tie
5	4	4071_08mb_08fjx	0	MORB-08 x FJIC-08 Swivel
6	4	4071_08mb_08mj	0	Adapter MORB-08 x MJIC-08
7	2	4071_08mb_08mj90	0	Elbow Adapter 90 deg MORB-08 x MJIC-08
8	3	4071_08mb_08mj_08mj	0	Tee MORB-08 x MJIC-08 x MJIC-08
9	2	4071_08mj_08fjx_08mj	0	Tee MJIC-08 x FJIC-08 x MJIC-08
10	1	4071_08mj_08mj_08mj	0	Tee Nipple MJIC-08 3 way
11	3	4071_08mj_08mj_BH	0	BulkHead MJIC-08 x MJIC-08
12	4	4071_12mb_08mj90	0	Elbow Adapter 90 deg MORB-12 x MJIC-08
13	6	407300026	0	Tip (ISO 7241-1) 1/2" Body ORB-08
14	2	407400144	0	Counter Balance Valve 7:1
15	2	407400147	0	Ball Valve HP SAE 08
16	4	407600336	0	Pipe Clamps Twin Series DIN 3015, Cover Plate 3D
17	8	407600337	0	Hose Clamp Half Twin 3D 21.3 mm
18	6	407600341	0	Triple Clamp Half 21 mm
19	3	407600342	0	Triple Clamp Top Plate
20	1	410100046	0	Spiral Wrap Med 30"
21	2	410100047	0	Spiral Wrap Med 16"
22	1	424_06_4_030.75E_08fjx_08fjx90	0	Cyl. Cap Right <-> Cyl. Rod Right
23	1	424_06_4_031.25E_08fjx_08fjx90	0	Cyl. Cap Left <-> Cyl. Rod Left
24	1	424_06_4_040.00E_08mb_08fjx	0	Blade Down <-> Tilt Right Down Tee
25	1	424_06_4_040.00E_08mb_08fjx	0	Tilt Left Up <-> Blade Up Tee
26	1	424_06_4_040.00E_08mb_08fjx	0	Tilt Left Down <-> Tilt Right Up Tee
29	1	424_08_4_122.00E_08fjx_08fjx	0	Tilt Right Down <-> Bulkhead
30	1	424_08_4_122.00E_08fjx_08fjx	0	Blade Up <-> Bulkhead
31	1	424_08_4_122.00E_08fjx_08fjx	0	Blade Down <-> Bulkhead
32	1	424_08_4_137.00E_08fjx_08fjx	0	Bulkhead <-> Tee
35	6	BLT8C_1-4x1_1-2	0	Bolt Gr. 8 UNC 1/4" x 1-1/2"
36	4	BLT8C_5-16x1_3-4	0	Bolt Gr. 8 UNC 5/16" x 1-3/4"

LAND LEVELER UNIQUE HOSE LENGTH BY MODEL

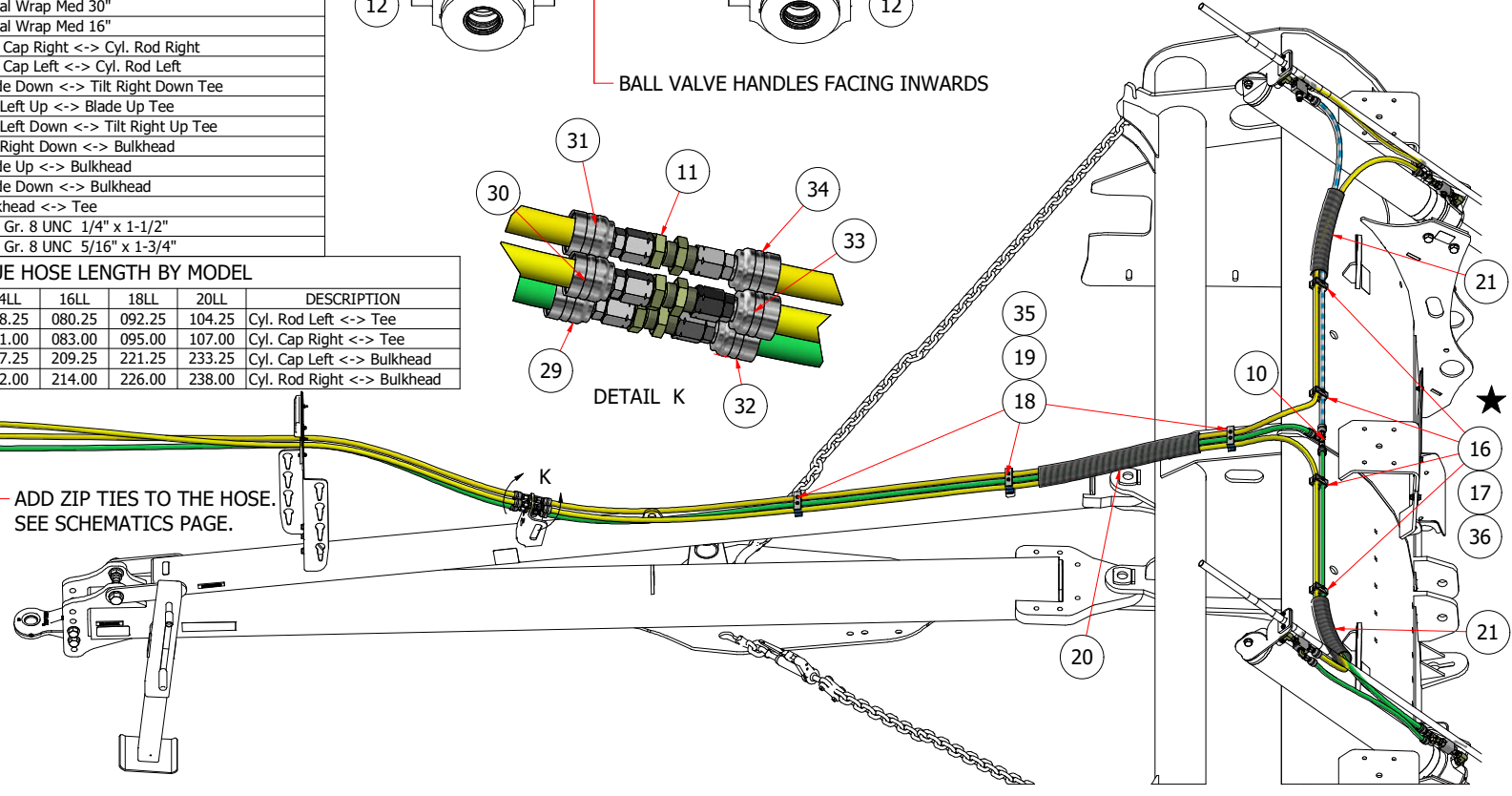
ITEM	QTY	PART NUMBER	REV	14LL	16LL	18LL	20LL	DESCRIPTION
27	1	424_08_4_080.25E_08fjx_08fjx	0	068.25	080.25	092.25	104.25	Cyl. Rod Left <-> Tee
28	1	424_08_4_083.00E_08fjx_08fjx	0	071.00	083.00	095.00	107.00	Cyl. Cap Right <-> Tee
33	1	424_08_4_209.25E_08fjx_08fjx	0	197.25	209.25	221.25	233.25	Cyl. Cap Left <-> Bulkhead
34	1	424_08_4_214.00E_08fjx_08fjx	0	202.00	214.00	226.00	238.00	Cyl. Rod Right <-> Bulkhead



BALL VALVE HANDLES FACING INWARDS



ADD ZIP TIES TO THE HOSE. SEE SCHEMATICS PAGE.

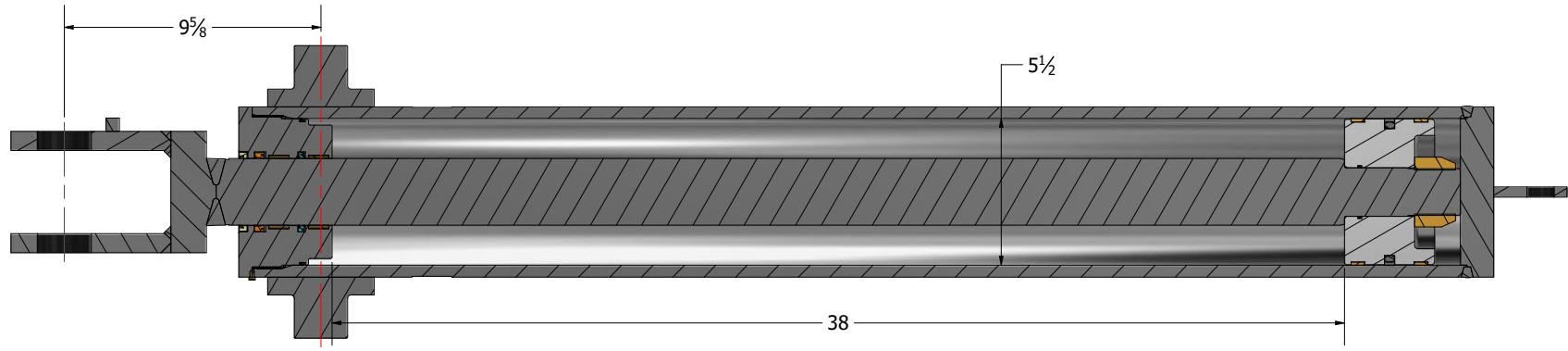
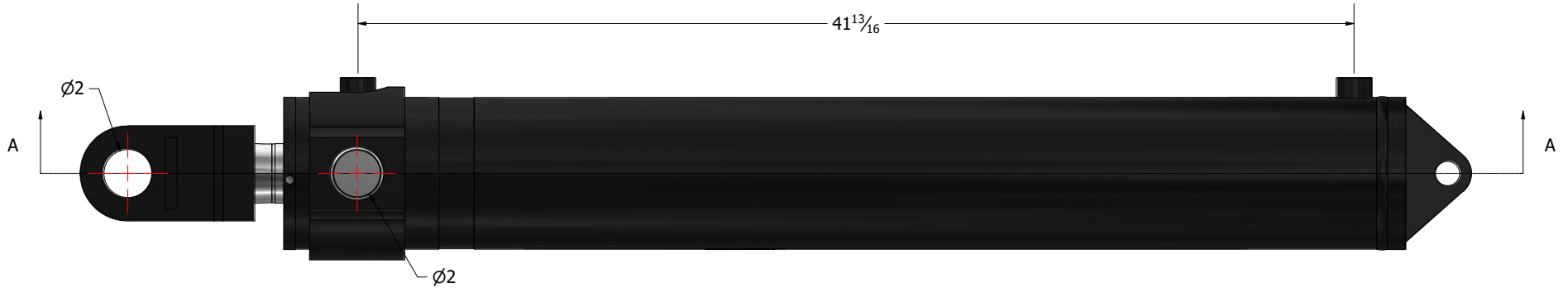


# SECTION 4.00

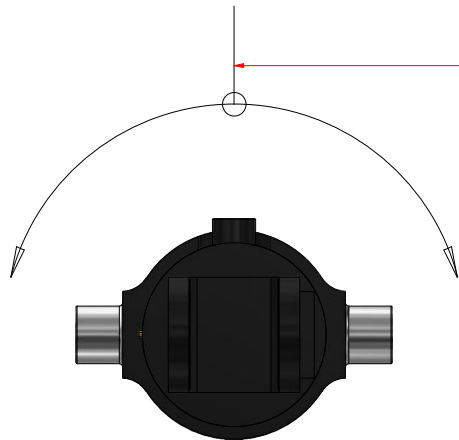
## HYDRAULIC CYLINDERS

2201 14LL-20LL CYLINDER, LEFT

PLEASE CONTACT DEALER FOR REPLACEMENT SEAL KITS



SECTION A-A



THIS IS HOW THE CYLINDER IS PURCHASED

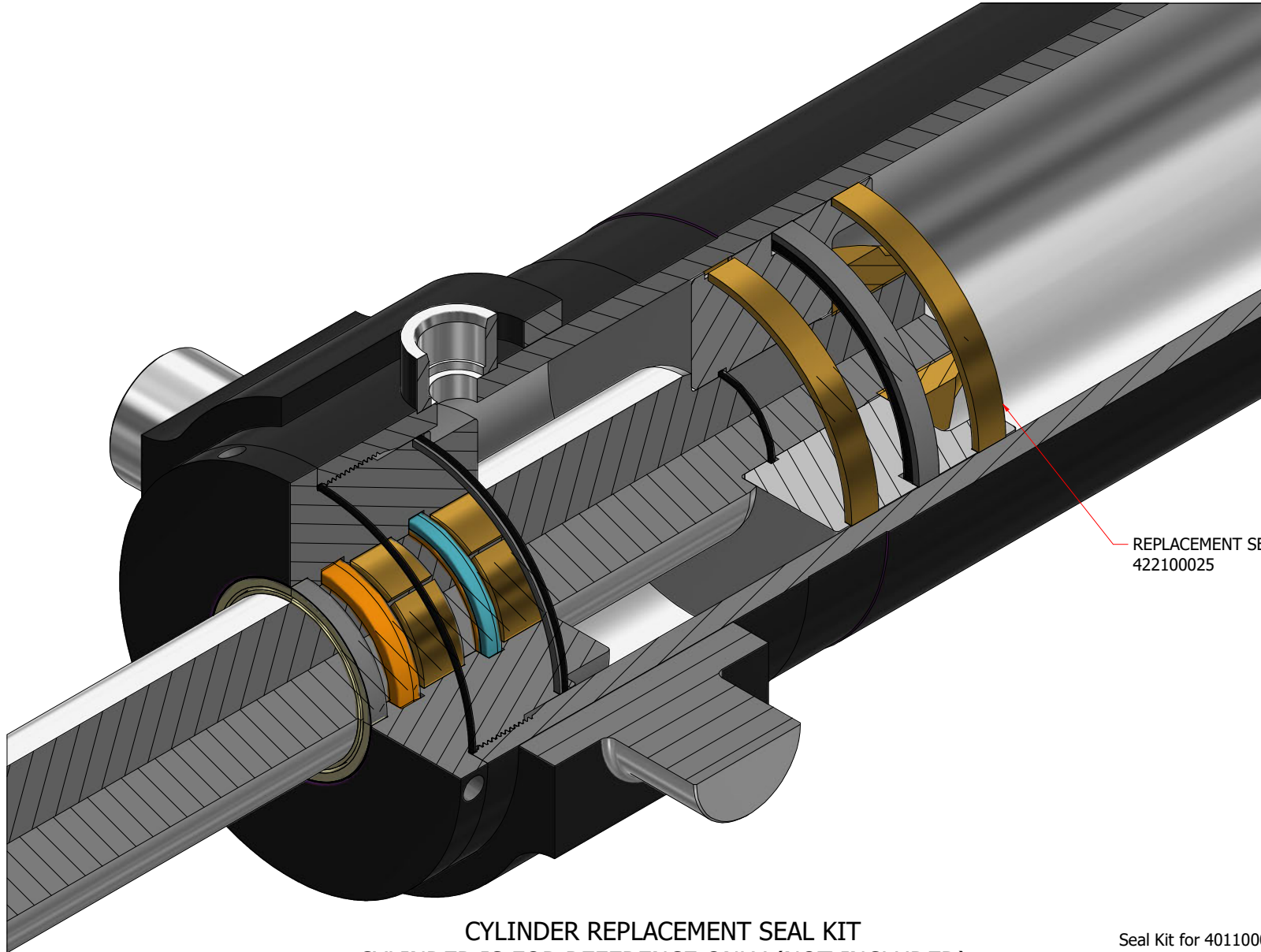
401100027-CB (150505-02 RR)  
Lift Cyl. LL Flex Series (150505-02 RR)

**SECTION 4.00**

**HYDRAULIC CYLINDERS**

2201 14LL-20LL CYLINDER, LEFT

PLEASE CONTACT DEALER FOR REPLACEMENT SEAL KITS



REPLACEMENT SEAL KIT #  
422100025

CYLINDER REPLACEMENT SEAL KIT  
CYLINDER IS FOR REFERENCE ONLY (NOT INCLUDED)

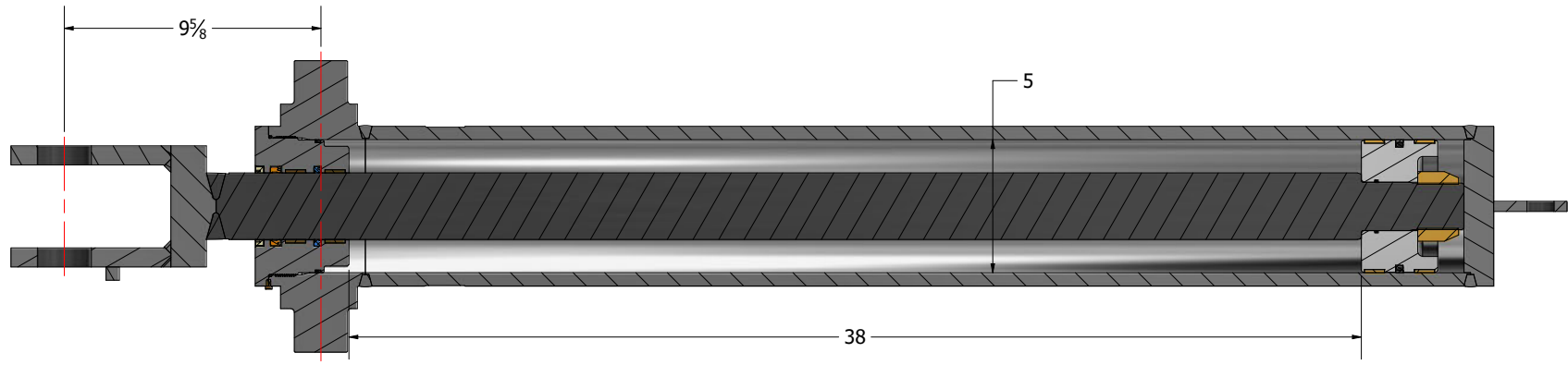
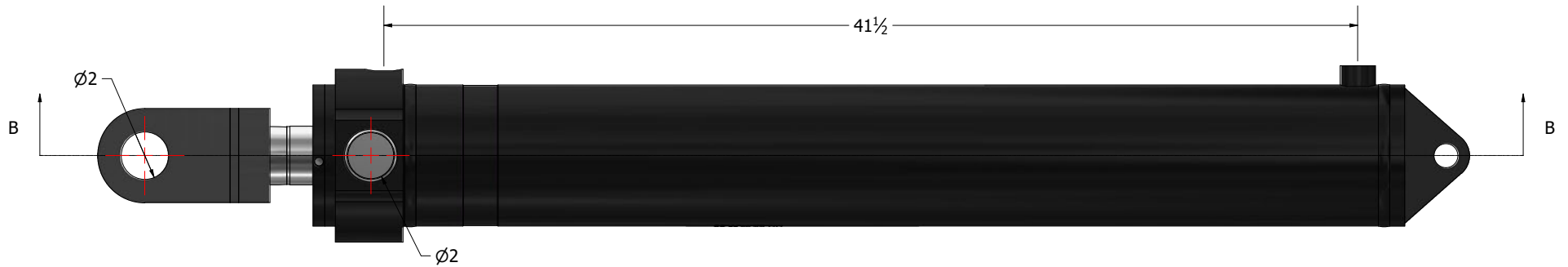
422100025  
Seal Kit for 401100027-CP (150505-00 RR)

## SECTION 4.00

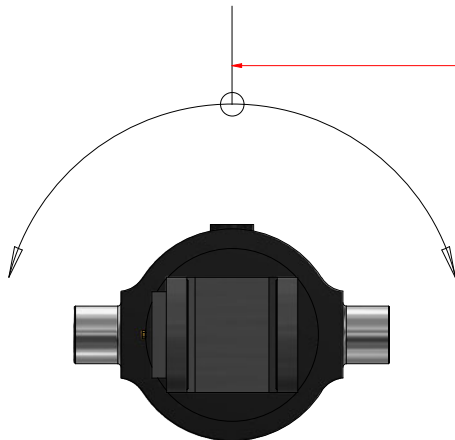
### HYDRAULIC CYLINDERS

2201 14LL-20LL CYLINDER, RIGHT

PLEASE CONTACT DEALER FOR REPLACEMENT SEAL KITS



SECTION B-B



THIS IS HOW THE CYLINDER IS PURCHASED

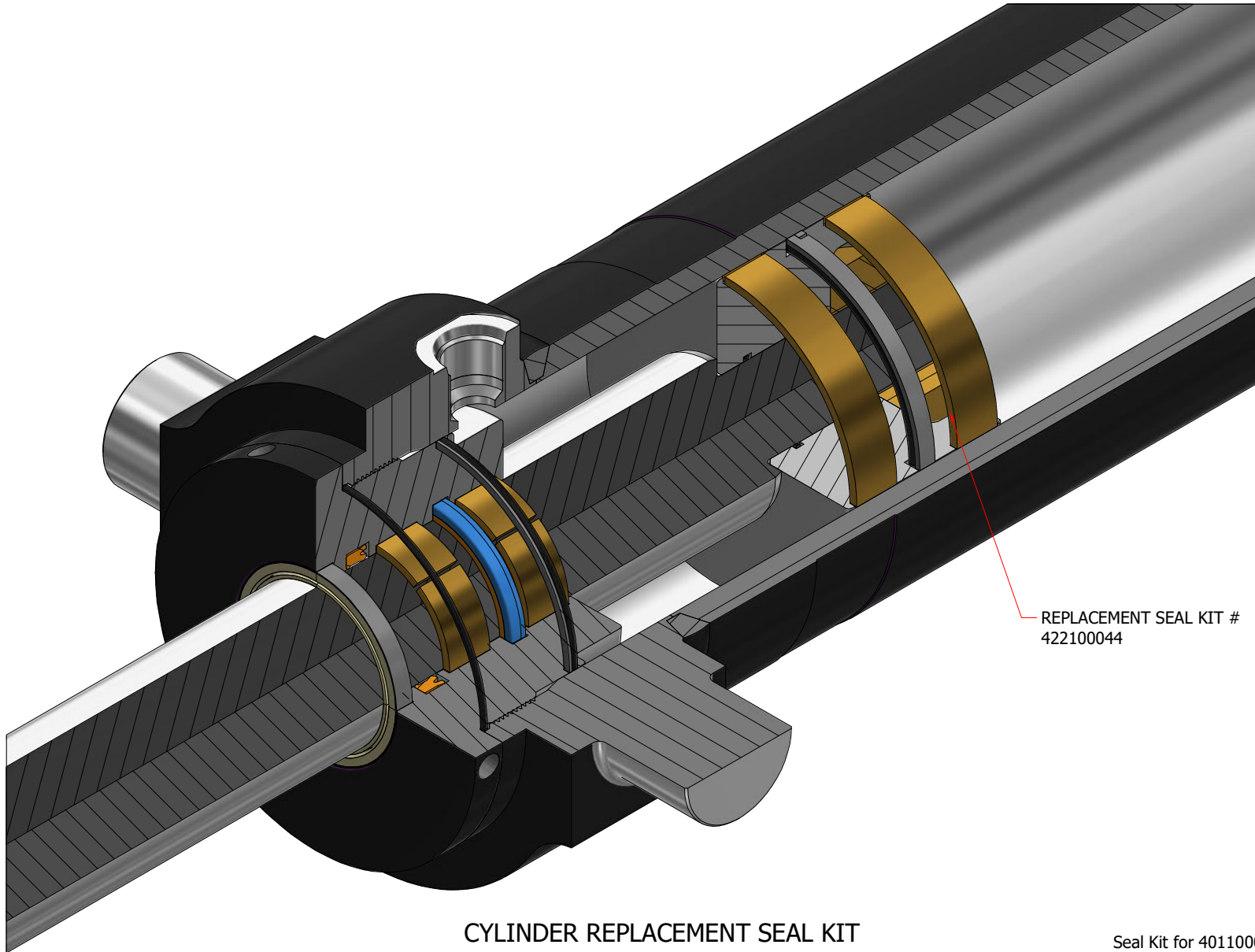
401100026-CB (150494-02 RR)  
Lift Cyl. Land Levelers (150494-02 RR)

**SECTION 4.00**

**HYDRAULIC CYLINDERS**

2201 14LL-20LL CYLINDER, RIGHT

PLEASE CONTACT DEALER FOR REPLACEMENT SEAL KITS



REPLACEMENT SEAL KIT #  
422100044

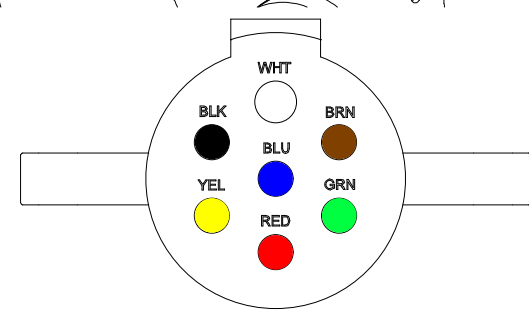
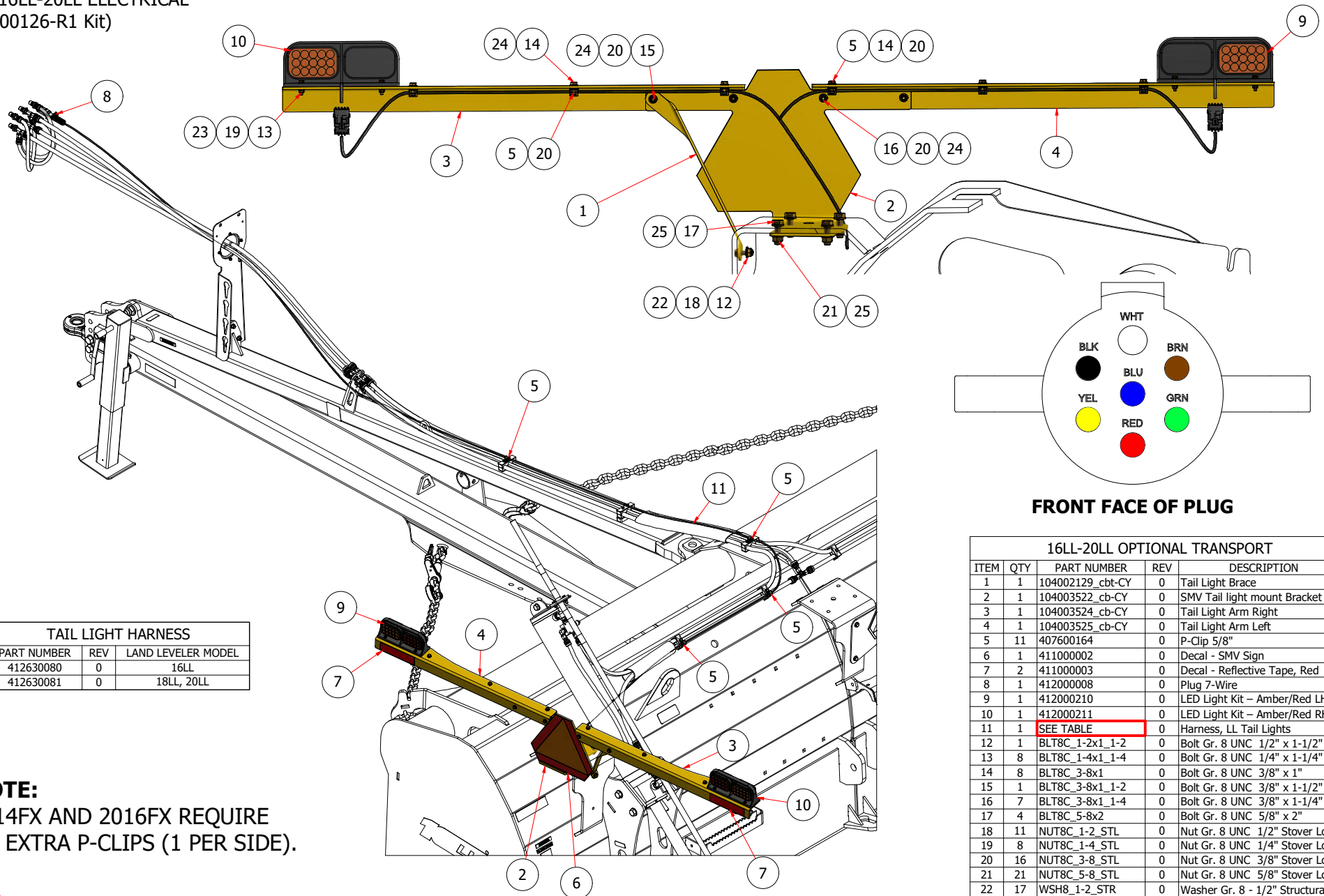
CYLINDER REPLACEMENT SEAL KIT  
CYLINDER IS FOR REFERENCE ONLY (NOT INCLUDED)

422100044  
Seal Kit for 401100026-CP (150494-00 RR)

# SECTION 5.00

## ELECTRICAL

2201 16LL-20LL ELECTRICAL  
(304100126-R1 Kit)



FRONT FACE OF PLUG

TAIL LIGHT HARNESS		
PART NUMBER	REV	LAND LEVELER MODEL
412630080	0	16LL
412630081	0	18LL, 20LL

16LL-20LL OPTIONAL TRANSPORT				
ITEM	QTY	PART NUMBER	REV	DESCRIPTION
1	1	104002129_cbt-CY	0	Tail Light Brace
2	1	104003522_cb-CY	0	SMV Tail light mount Bracket
3	1	104003524_cb-CY	0	Tail Light Arm Right
4	1	104003525_cb-CY	0	Tail Light Arm Left
5	11	407600164	0	P-Clip 5/8"
6	1	411000002	0	Decal - SMV Sign
7	2	411000003	0	Decal - Reflective Tape, Red
8	1	412000008	0	Plug 7-Wire
9	1	412000210	0	LED Light Kit - Amber/Red LH
10	1	412000211	0	LED Light Kit - Amber/Red RH
11	1	SEE TABLE	0	Harness, LL Tail Lights
12	1	BLT8C_1-2x1_1-2	0	Bolt Gr. 8 UNC 1/2" x 1-1/2"
13	8	BLT8C_1-4x1_1-4	0	Bolt Gr. 8 UNC 1/4" x 1-1/4"
14	8	BLT8C_3-8x1	0	Bolt Gr. 8 UNC 3/8" x 1"
15	1	BLT8C_3-8x1_1-2	0	Bolt Gr. 8 UNC 3/8" x 1-1/2"
16	7	BLT8C_3-8x1_1-4	0	Bolt Gr. 8 UNC 3/8" x 1-1/4"
17	4	BLT8C_5-8x2	0	Bolt Gr. 8 UNC 5/8" x 2"
18	11	NUT8C_1-2_STL	0	Nut Gr. 8 UNC 1/2" Stover Lock
19	8	NUT8C_1-4_STL	0	Nut Gr. 8 UNC 1/4" Stover Lock
20	16	NUT8C_3-8_STL	0	Nut Gr. 8 UNC 3/8" Stover Lock
21	21	NUT8C_5-8_STL	0	Nut Gr. 8 UNC 5/8" Stover Lock
22	17	WSH8_1-2_STR	0	Washer Gr. 8 - 1/2" Structural
23	16	WSH8_1-4_STR	0	Washer Gr. 8 - 1/4" Structural
24	20	WSH8_3-8_STR	0	Washer Gr. 8 - 3/8" Structural
25	32	WSH8_5-8_STR	0	Washer Gr. 8 - 5/8" Structural

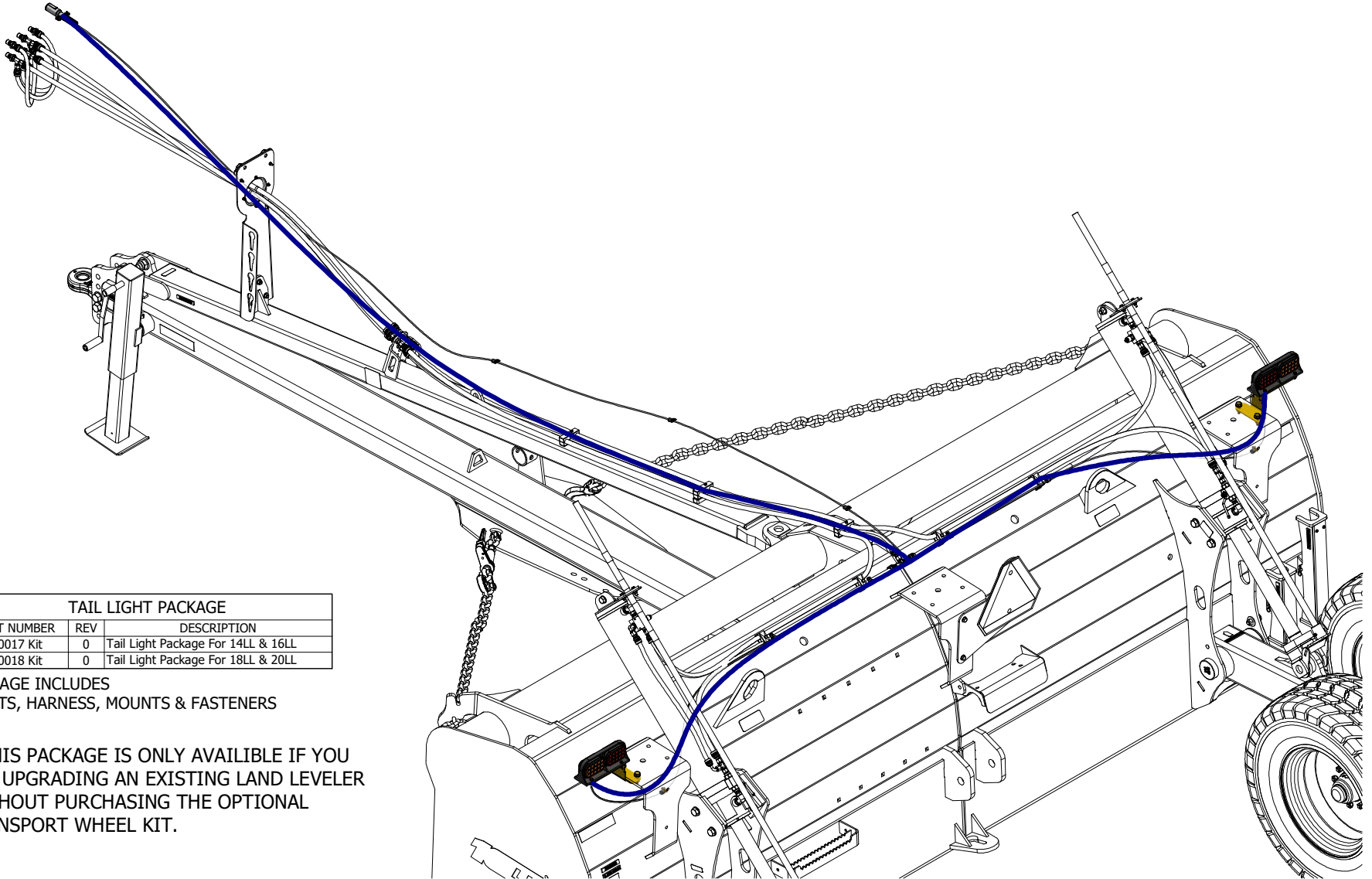
**NOTE:**  
1814FX AND 2016FX REQUIRE  
(2) EXTRA P-CLIPS (1 PER SIDE).

**NOTE:**  
THIS SECTION ONLY SHOWS THE ELECTRICAL COMPONENTS FOR THE OPTIONAL TRANSPORT WHEEL KIT.

## SECTION 5.01

### ELECTRICAL

OPTIONAL TAIL LIGHT PACKAGE  
CONTACT SALES FOR MORE INFORMATION



TAIL LIGHT PACKAGE		
PART NUMBER	REV	DESCRIPTION
304100017 Kit	0	Tail Light Package For 14LL & 16LL
304100018 Kit	0	Tail Light Package For 18LL & 20LL

PACKAGE INCLUDES  
LIGHTS, HARNESS, MOUNTS & FASTENERS

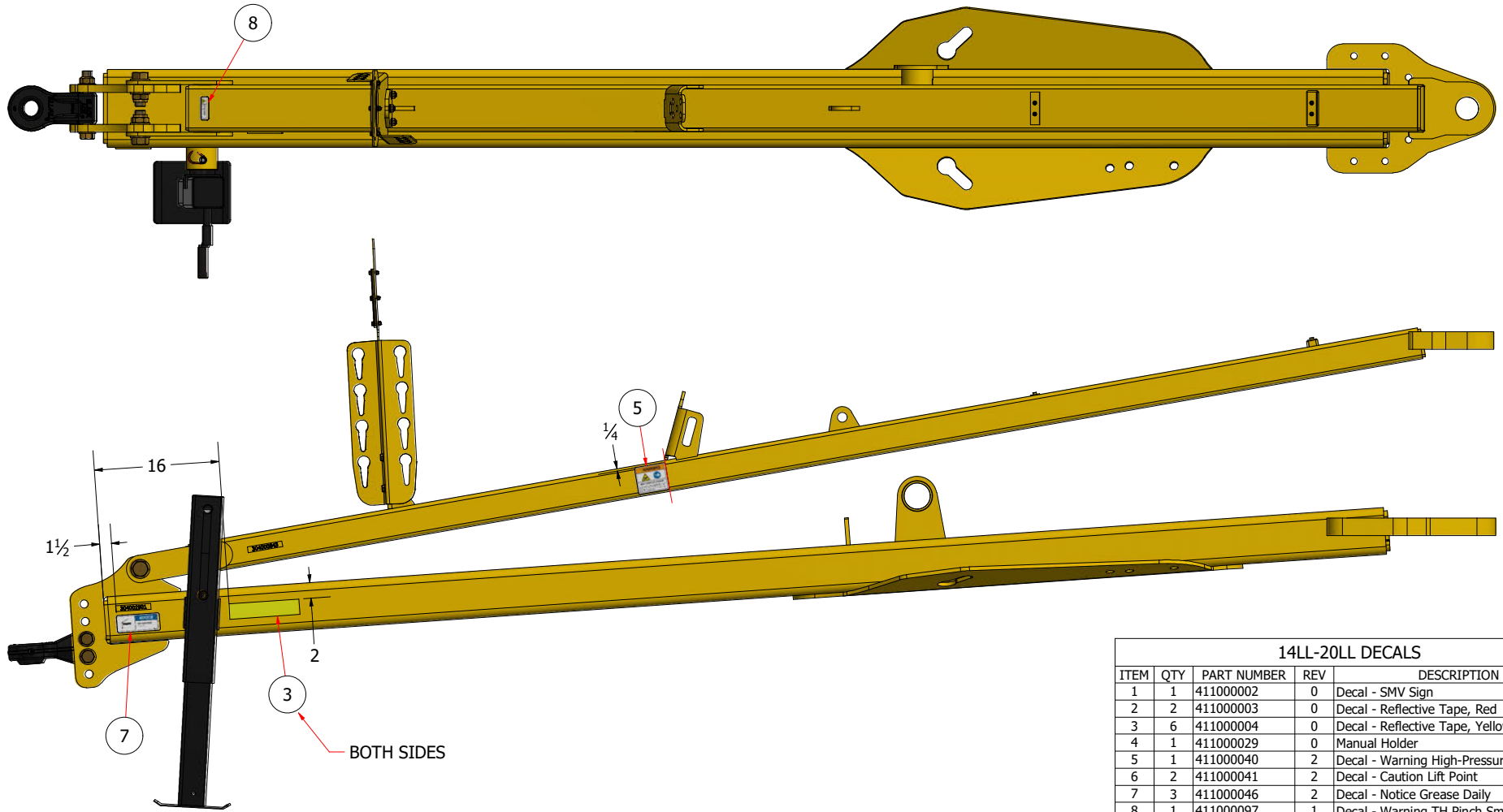
\* THIS PACKAGE IS ONLY AVAILABLE IF YOU  
ARE UPGRADING AN EXISTING LAND LEVELER  
WITHOUT PURCHASING THE OPTIONAL  
TRANSPORT WHEEL KIT.



# SECTION 6.00

## DECAL

### 2201 14LL-20LL DECAL PLACEMENT



BOTH SIDES

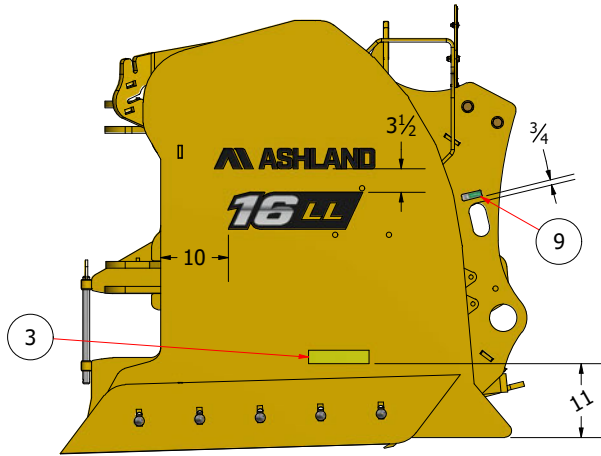
14LL-20LL DECALS

ITEM	QTY	PART NUMBER	REV	DESCRIPTION
1	1	411000002	0	Decal - SMV Sign
2	2	411000003	0	Decal - Reflective Tape, Red
3	6	411000004	0	Decal - Reflective Tape, Yellow
4	1	411000029	0	Manual Holder
5	1	411000040	2	Decal - Warning High-Pressure Hyd
6	2	411000041	2	Decal - Caution Lift Point
7	3	411000046	2	Decal - Notice Grease Daily
8	1	411000097	1	Decal - Warning TH Pinch Small
9	2	411000102	1	Decal - Safety Tie Down
10	8	411000124	1	Decal - Notice Grease Point Marker
11	1	411000148	3	Decal - Serial Plate
12	8	411000149	0	Decal - Reflective Tape, Red
13	2	411000176	0	Decal - Lift Hook Highlight
14	2	411000177	0	Decal - Lift Hook Highlight
15	2	411000187	0	Decal - Notice Grease 250hr, 10pumps LL
16	2	411000195	0	Decal - Ball Valve 1 Notice
17	2	411000331	0	Decal - LL Logo Ashland
18	2	411000333	0	Decal - Logo 16LL

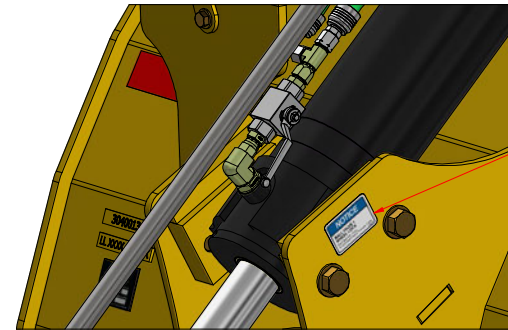
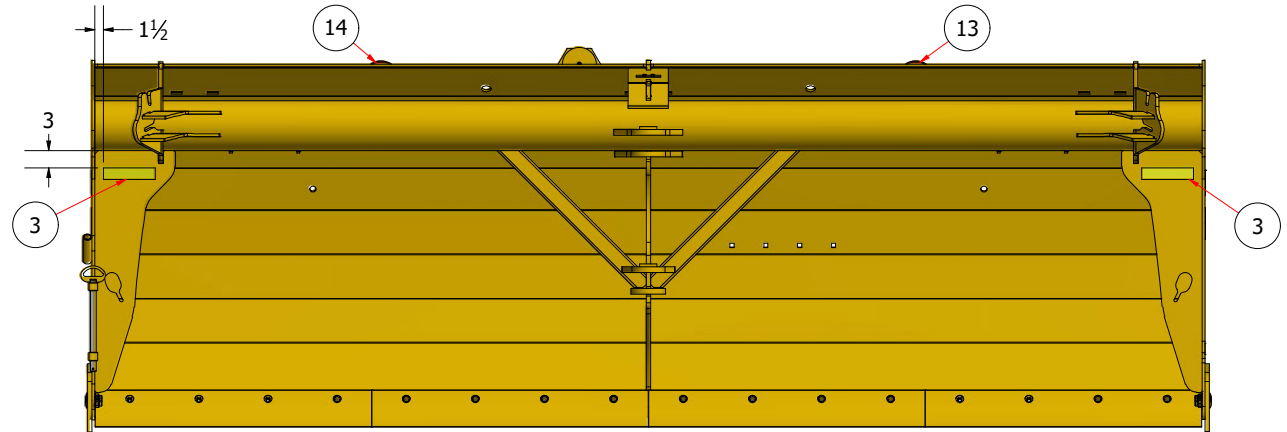
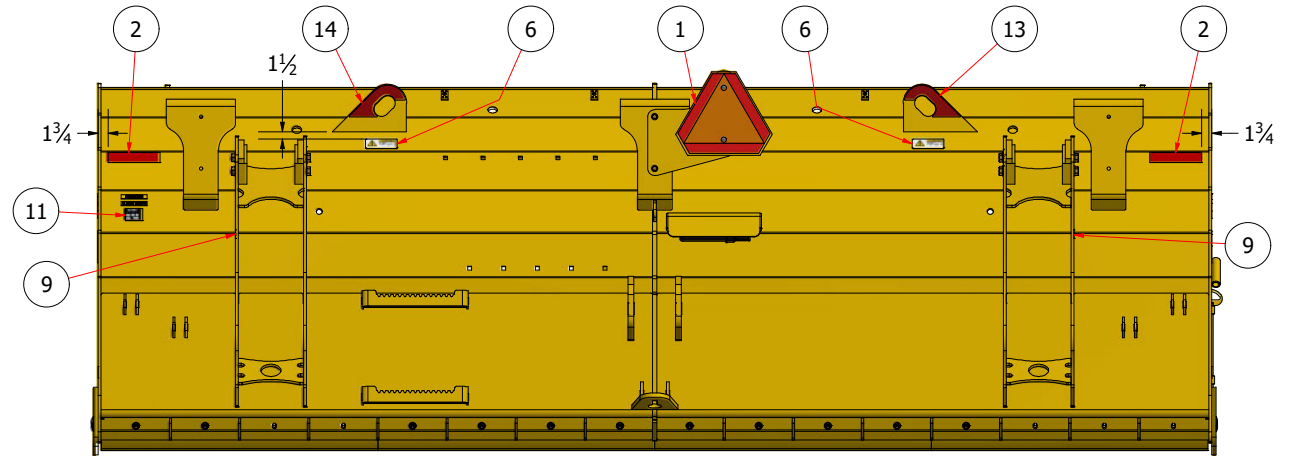
# SECTION 6.00

## DECAL

### 2201 14LL-20LL DECAL PLACEMENT



SEE CHART BELOW



#### 14LL-20LL DECALS

ITEM	QTY	PART NUMBER	REV	DESCRIPTION
1	1	411000002	0	Decal - SMV Sign
2	2	411000003	0	Decal - Reflective Tape, Red
3	6	411000004	0	Decal - Reflective Tape, Yellow
4	1	411000029	0	Manual Holder
5	1	411000040	2	Decal - Warning High-Pressure Hyd
6	2	411000041	2	Decal - Caution Lift Point
7	3	411000046	2	Decal - Notice Grease Daily
8	1	411000097	1	Decal - Warning TH Pinch Small
9	2	411000102	1	Decal - Safety Tie Down
10	8	411000124	1	Decal - Notice Grease Point Marker
11	1	411000148	3	Decal - Serial Plate
12	8	411000149	0	Decal - Reflective Tape, Red
13	2	411000176	0	Decal - Lift Hook Highlight
14	2	411000177	0	Decal - Lift Hook Highlight
15	2	411000187	0	Decal - Notice Grease 250hr, 10pumps LL
16	2	411000195	0	Decal - Ball Valve 1 Notice
17	2	411000331	0	Decal - LL Logo Ashland
18	2	411000333	0	Decal - Logo 16LL

#### MODEL DECAL

QTY	PART NUMBER	REV	DESCRIPTION
2	411000332	0	Decal - 14LL
2	411000333	0	Decal - 16LL
2	411000334	0	Decal - 18LL
2	411000335	0	Decal - 20LL

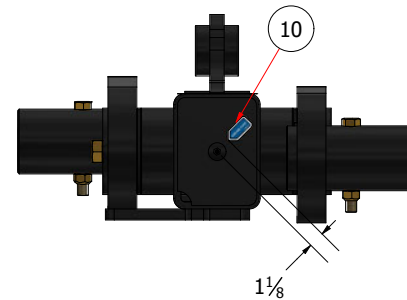
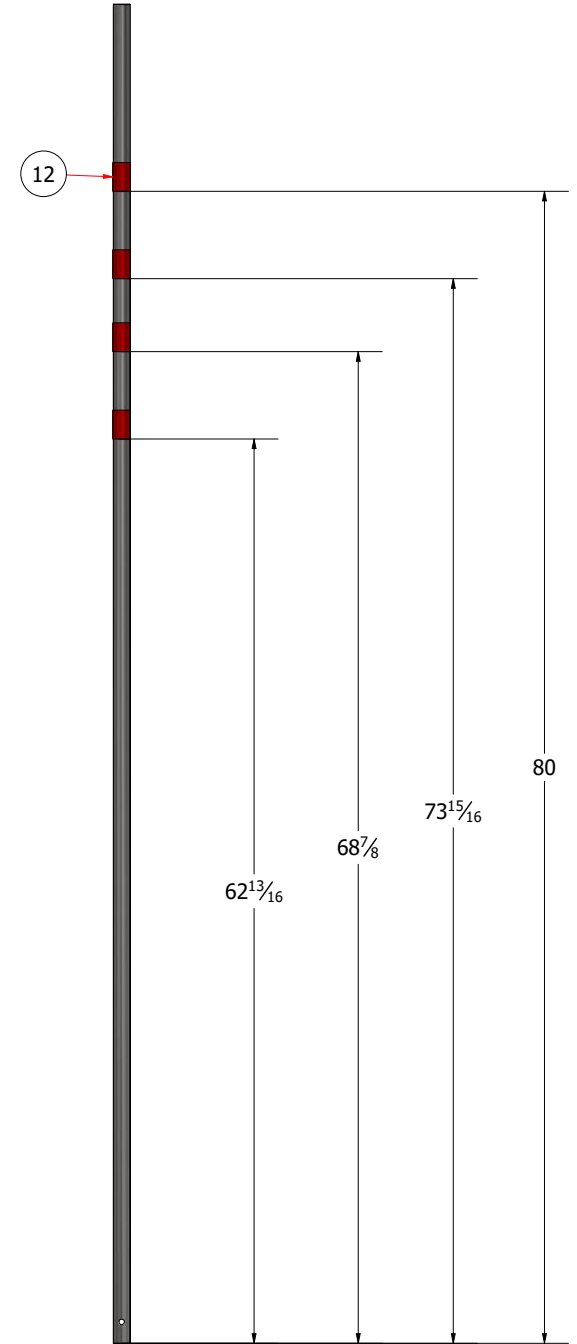
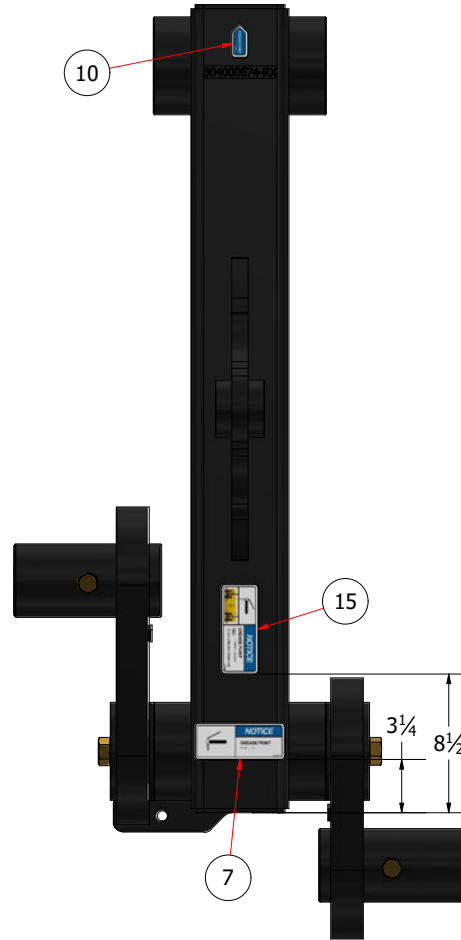
# SECTION 6.00

## DECAL

### 2201 14LL-20LL DECAL PLACEMENT



10 PLACE TO THE RIGHT OF ZERK ON ALL HUBS



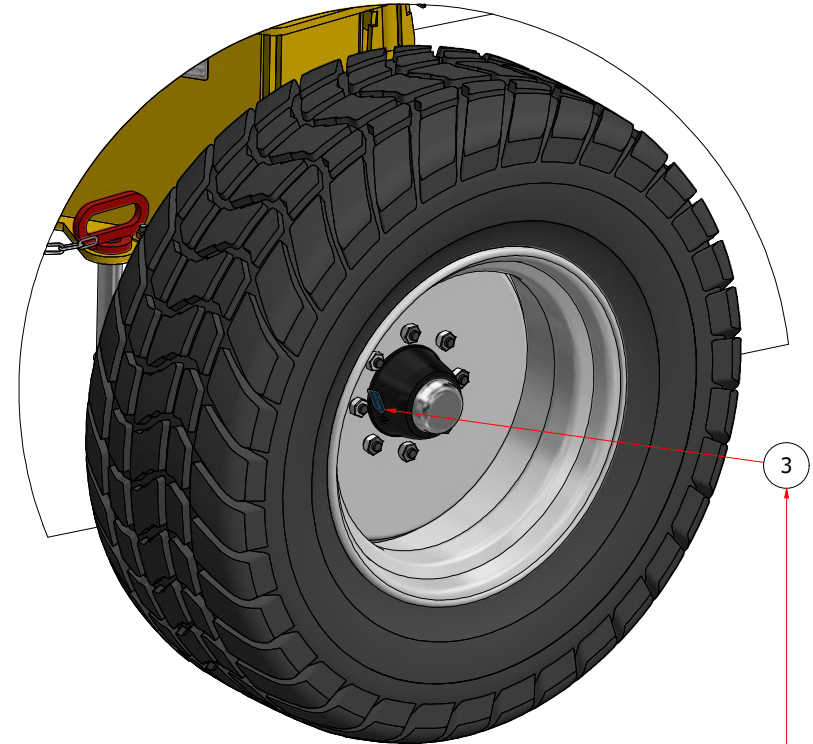
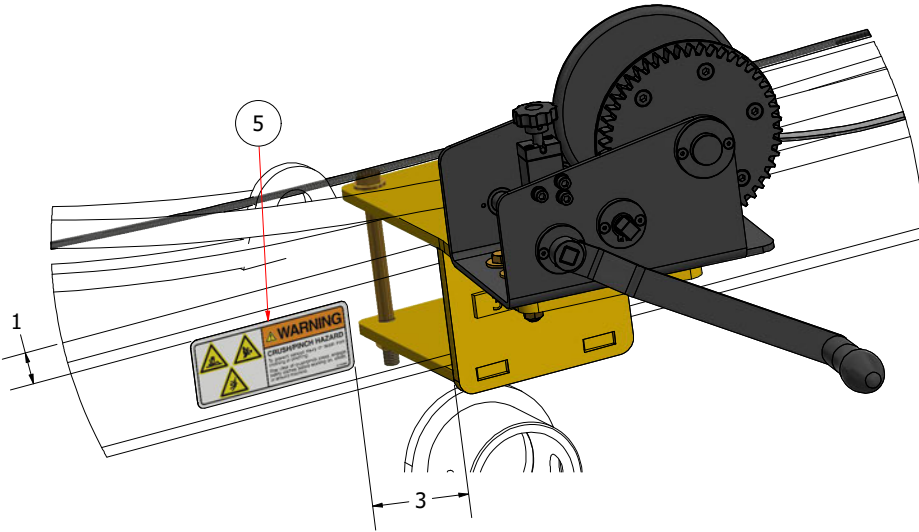
14LL-20LL DECALS

ITEM	QTY	PART NUMBER	REV	DESCRIPTION
1	1	411000002	0	Decal - SMV Sign
2	2	411000003	0	Decal - Reflective Tape, Red
3	6	411000004	0	Decal - Reflective Tape, Yellow
4	1	411000029	0	Manual Holder
5	1	411000040	2	Decal - Warning High-Pressure Hyd
6	2	411000041	2	Decal - Caution Lift Point
7	3	411000046	2	Decal - Notice Grease Daily
8	1	411000097	1	Decal - Warning TH Pinch Small
9	2	411000102	1	Decal - Safety Tie Down
10	8	411000124	1	Decal - Notice Grease Point Marker
11	1	411000148	3	Decal - Serial Plate
12	8	411000149	0	Decal - Reflective Tape, Red
13	2	411000176	0	Decal - Lift Hook Highlight
14	2	411000177	0	Decal - Lift Hook Highlight
15	2	411000187	0	Decal - Notice Grease 250hr, 10pumps LL
16	2	411000195	0	Decal - Ball Valve 1 Notice
17	2	411000331	0	Decal - LL Logo Ashland
18	2	411000333	0	Decal - Logo 16LL

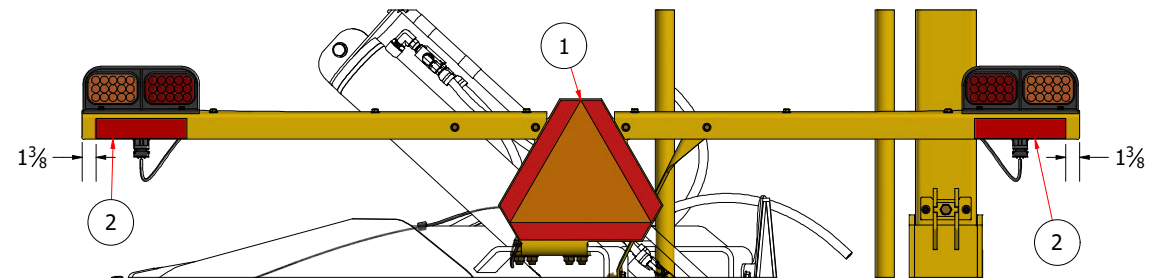
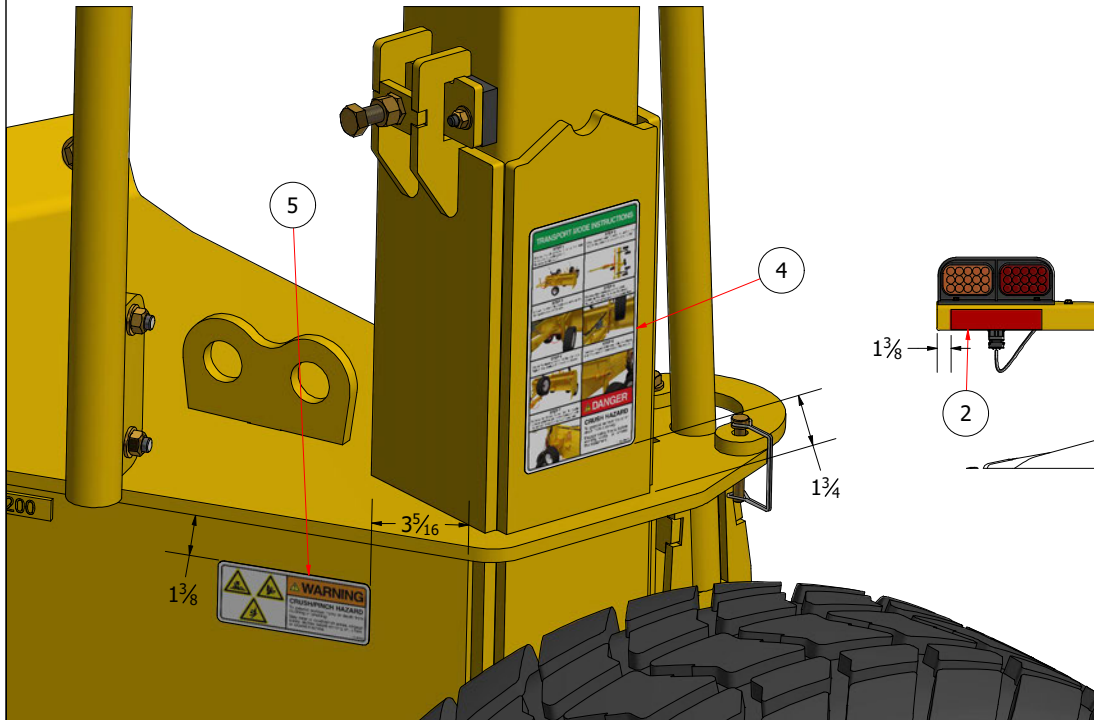
# SECTION 6.01

## DECAL

2201 16LL-20LL DECAL PLACEMENT  
(OPTIONAL TRANSPORT WHEEL KIT)



PLACE GREASE POINT DECAL ON  
FRONT AND REAR TRANSPORT WHEELS



16LL-20LL DECALS				
ITEM	QTY	PART NUMBER	REV	DESCRIPTION
1	1	411000002	0	Decal - SMV Sign
2	2	411000003	0	Decal - Reflective Tape, Red
3	2	411000124	1	Decal - Notice Grease Point Marker
4	1	411000260	1	Decal - Chain Leveler Transport Mode
5	2	411000261	0	Decal - Warning, Crush Hazard

# SECTION 8.00

## CUTTING EDGES

### LAND LEVELER REPLACEMENT CUTTING EDGES

CUTTING EDGE REQUIREMENT			
MODEL	4 FT BLADE	5 FT BLADE	ROUTER BIT
14LL	1	2	2
16LL	4	0	2
18LL	2	2	2
20LL	0	4	2

### CUTTING EDGES & ROUTER BITS

### REPLACEMENT BOLTS

4 FT CURVED BLADE

414000037	
QTY	DESCRIPTION
1	Curved Blade 5/8" x 8" x 4'

\*1 KIT PER EDGE

405100259 Kit	
QTY	DESCRIPTION
4	Bolt Gr. 8 UNC 5/8" x 2" Plow
4	Nut Gr. 8 UNC 5/8"
4	Washer Gr. 8 - 5/8" Structural

5 FT, CURVED BLADE

414000024	
QTY	DESCRIPTION
1	Curved Blade 5/8" x 8" x 5'

\*1 KIT PER EDGE

405100258 Kit	
QTY	DESCRIPTION
5	Bolt Gr. 8 UNC 5/8" x 2" Plow
5	Nut Gr. 8 UNC 5/8"
5	Washer Gr. 8 - 5/8" Structural

4 FT, STRAIGHT BLADE

414000036-R1	
QTY	DESCRIPTION
1	Center Bit 1/2" x 7" x 4'

4 FT, SERRATED STRAIGHT BLADE

414000035-R1	
QTY	DESCRIPTION
1	Cutting Edge 1/2" x 7" x 4', 6" Serrated

\*1 KIT PER EDGE

405100261 Kit	
QTY	DESCRIPTION
4	Bolt Gr. 5 UNC 5/8" x 2" Carriage
4	Nut Gr. 8 UNC 5/8"
4	Washer Gr. 8 - 5/8" Structural

5 FT, STRAIGHT BLADE

414000034-R1	
QTY	DESCRIPTION
1	Center Bit 1/2" x 7" x 5'

5 FT, SERRATED STRAIGHT BLADE

414000033	
QTY	DESCRIPTION
1	Cutting Edge 1/2" x 7" x 5', 6" Serrated

\*1 KIT PER EDGE

405100260 Kit	
QTY	DESCRIPTION
5	Bolt Gr. 5 UNC 5/8" x 2" Carriage
5	Nut Gr. 8 UNC 5/8"
5	Washer Gr. 8 - 5/8" Structural

ROUTER BIT, FITS ALL MODELS \*REQUIRES 1 PER SIDE

414000021	
QTY	DESCRIPTION
1	Router Bit

\*1 KIT PER EDGE

405100131 Kit	
QTY	DESCRIPTION
5	Bolt Gr. 5 UNC 3/4" x 2-1/2" Carriage
5	Nut Gr. 8 UNC 3/4"
5	Washer Gr. 8 - 3/4" Flat